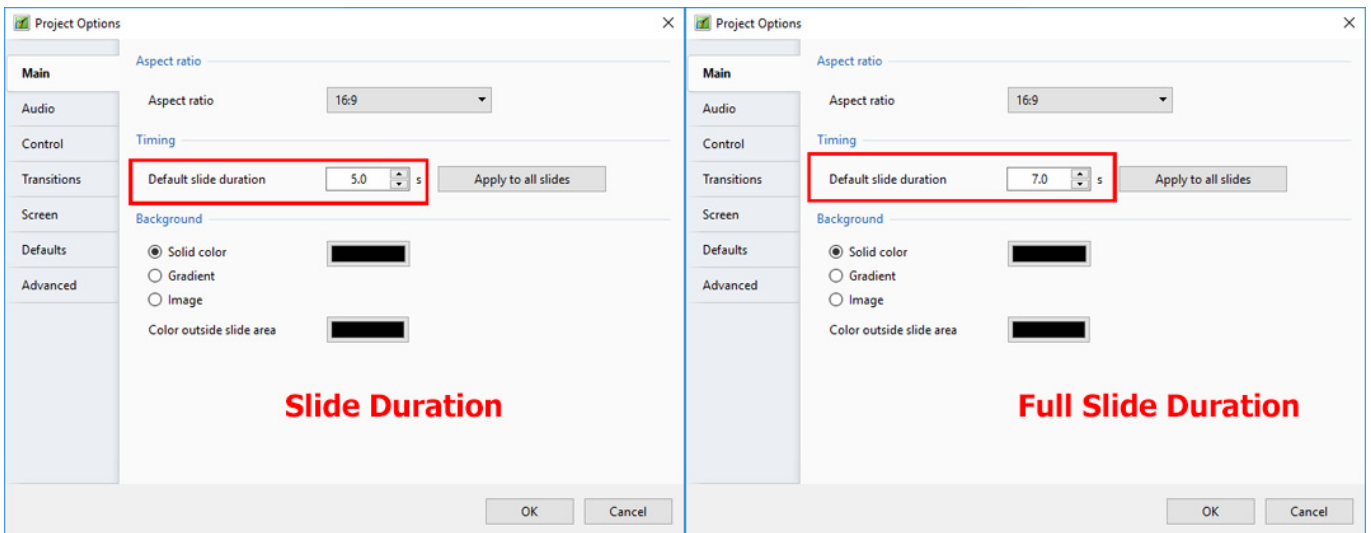
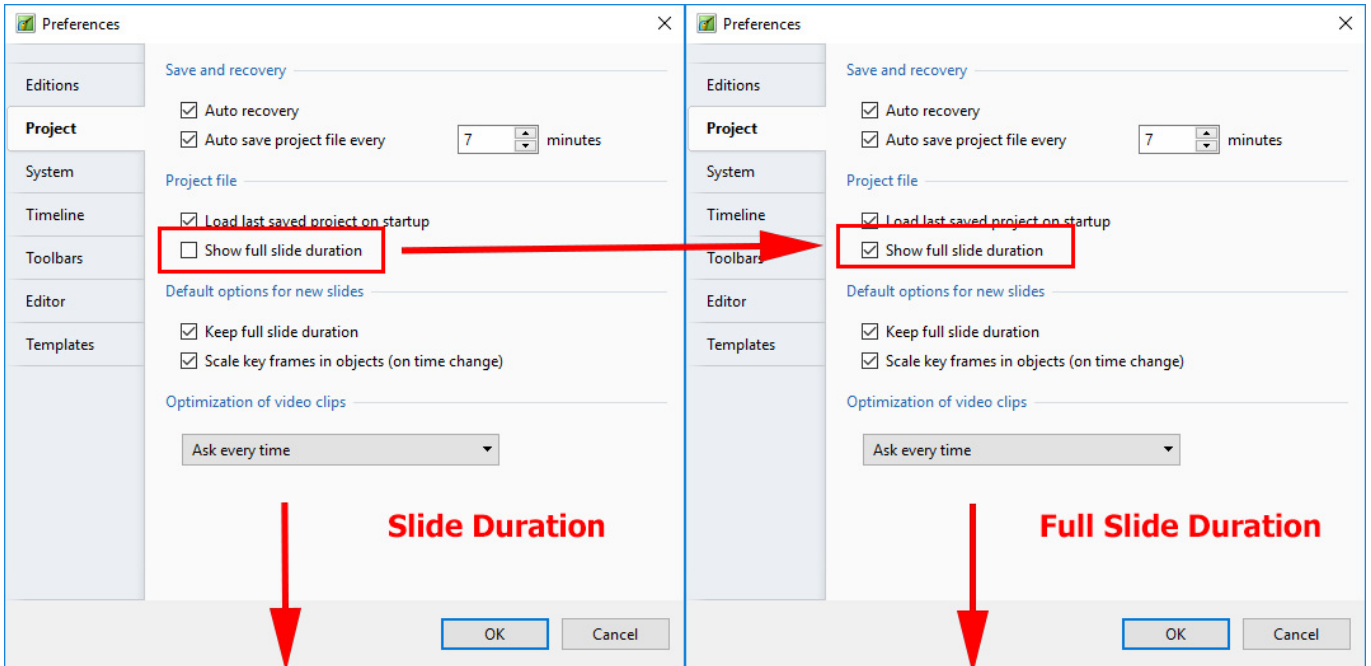


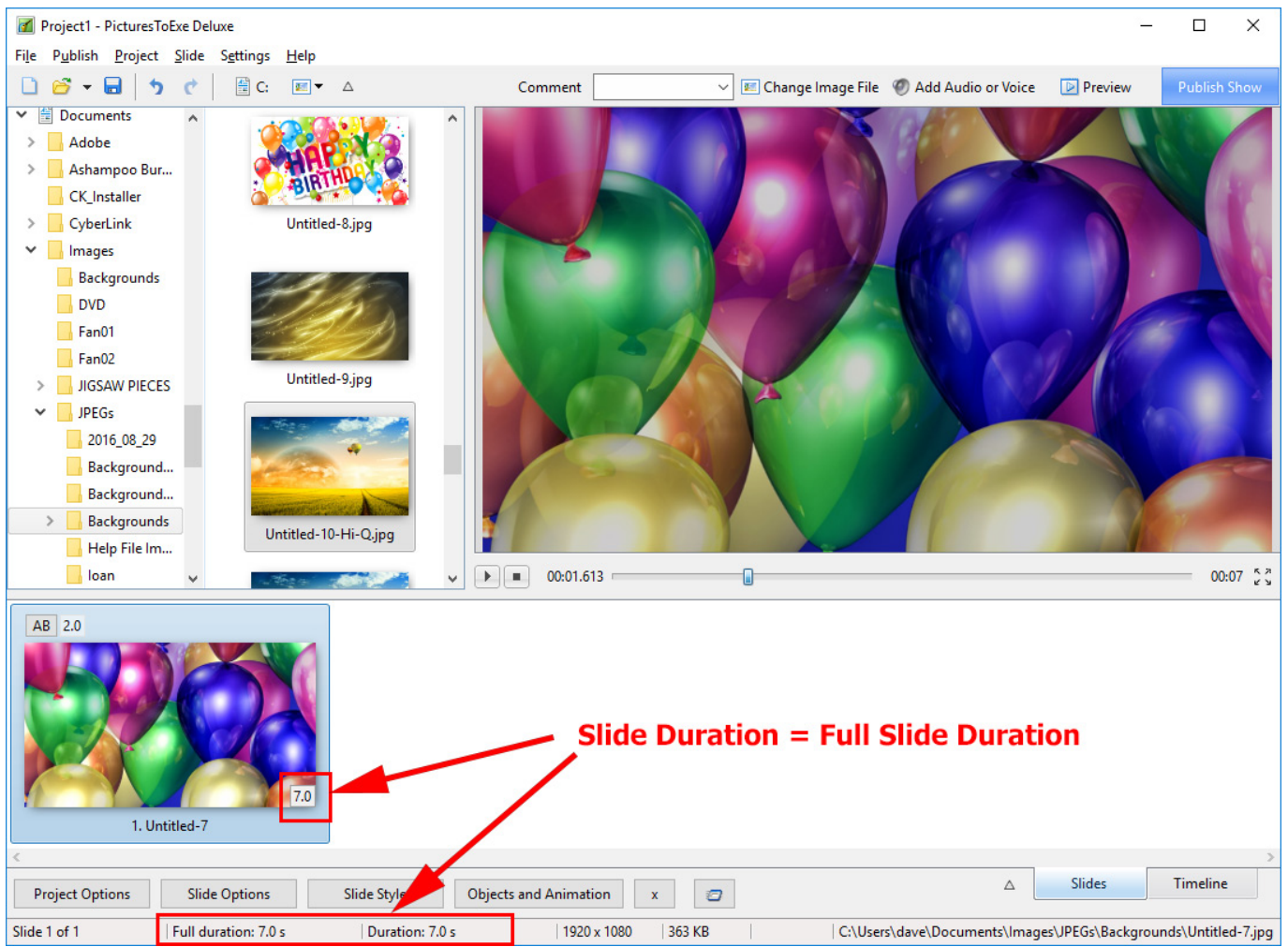
# Slide Duration

## Slide Duration and Full Slide Duration

Depending on the settings of Settings / Preferences and Project Options the duration seen in the Slide List can change.

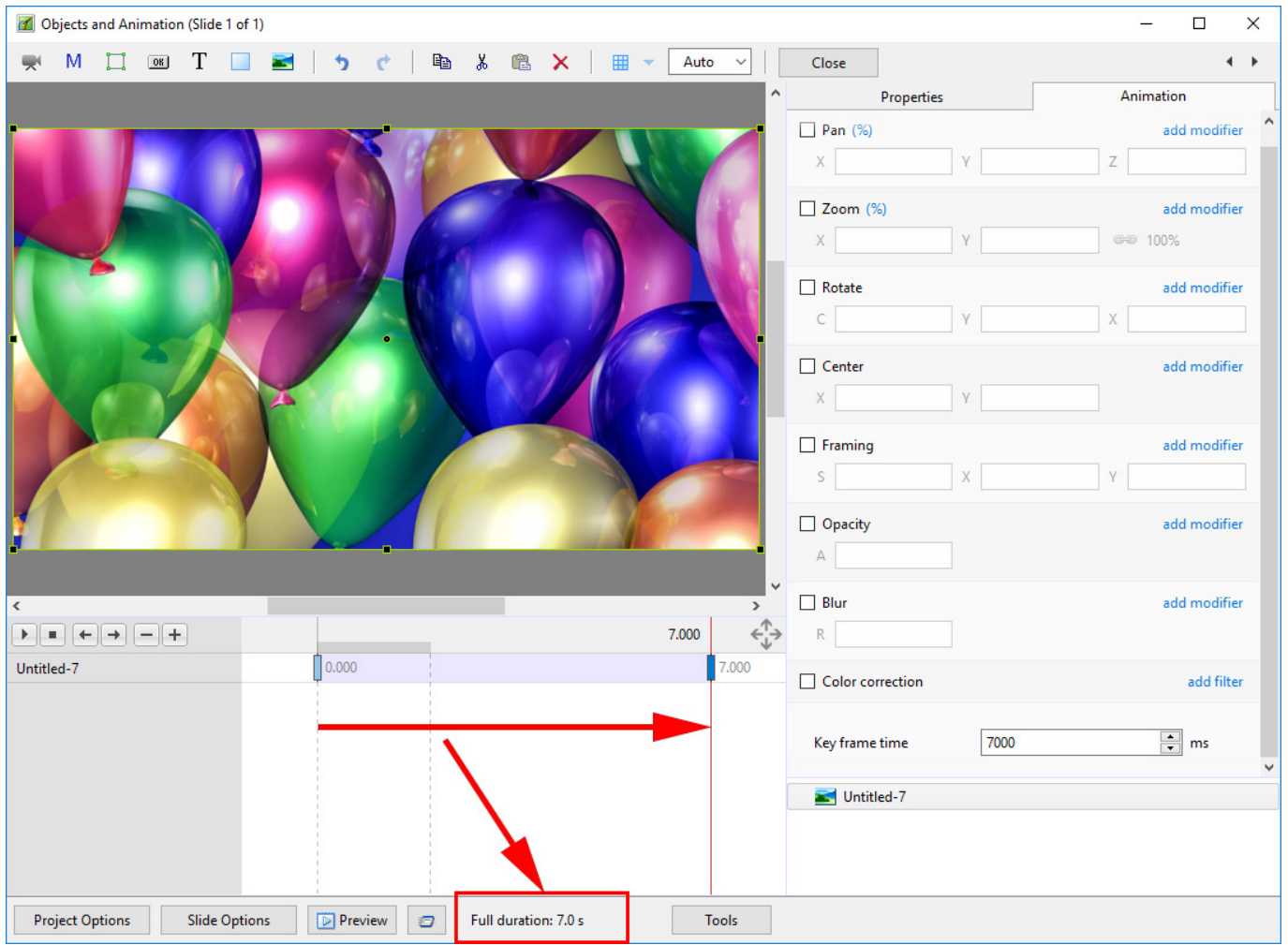


If a single slide is added to the Slide List the Main Screen View looks like this:



The Status bar shows the Full (Slide) Duration and the (Slide) Duration. The Slide Icon displays the Slide Duration. For a single slide the Duration will equal the Full Duration because there is no following slide transition time to take into account - or the following slide transition time is zero.

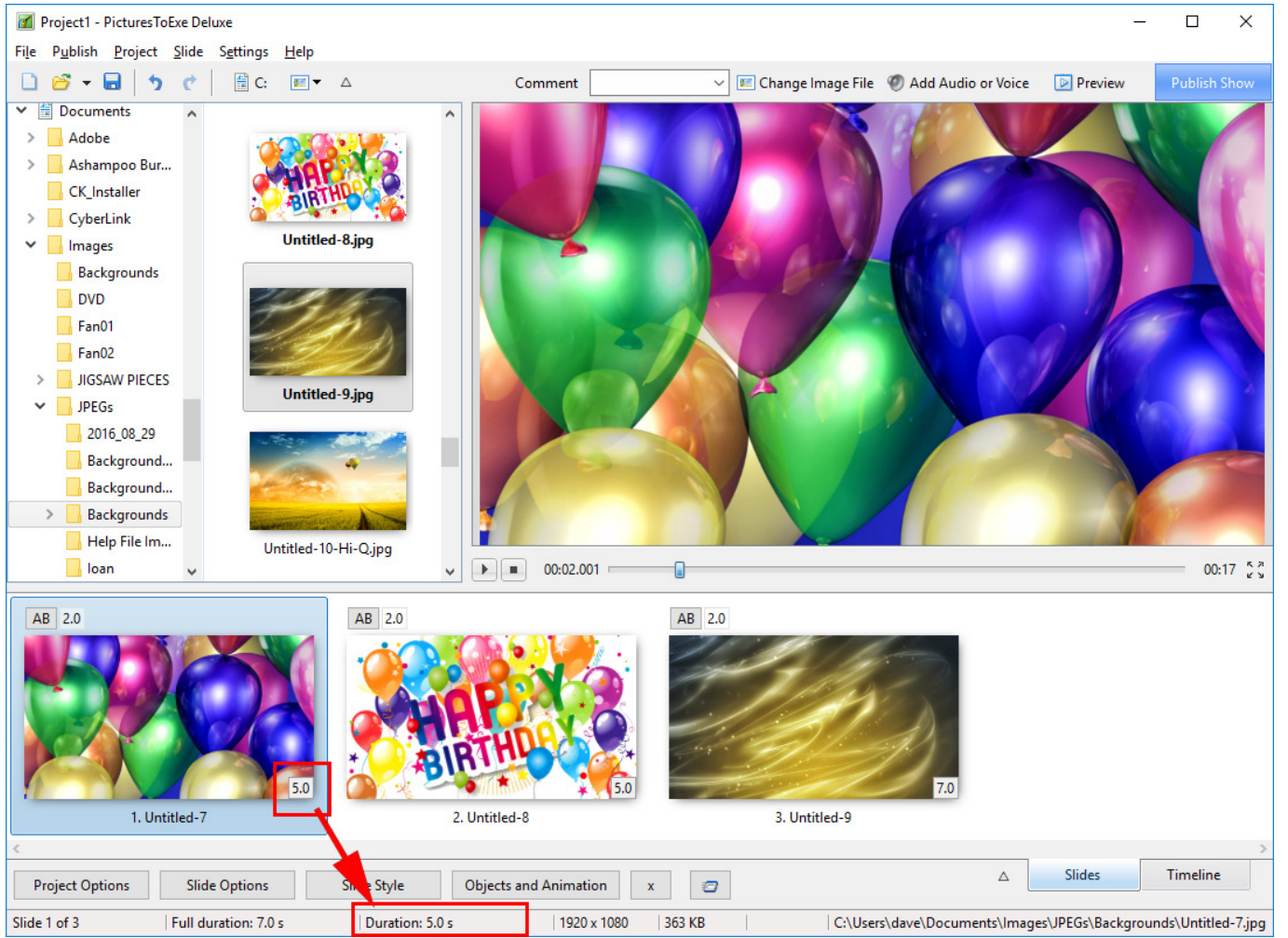
The corresponding Objects and Animation Screen looks like this:



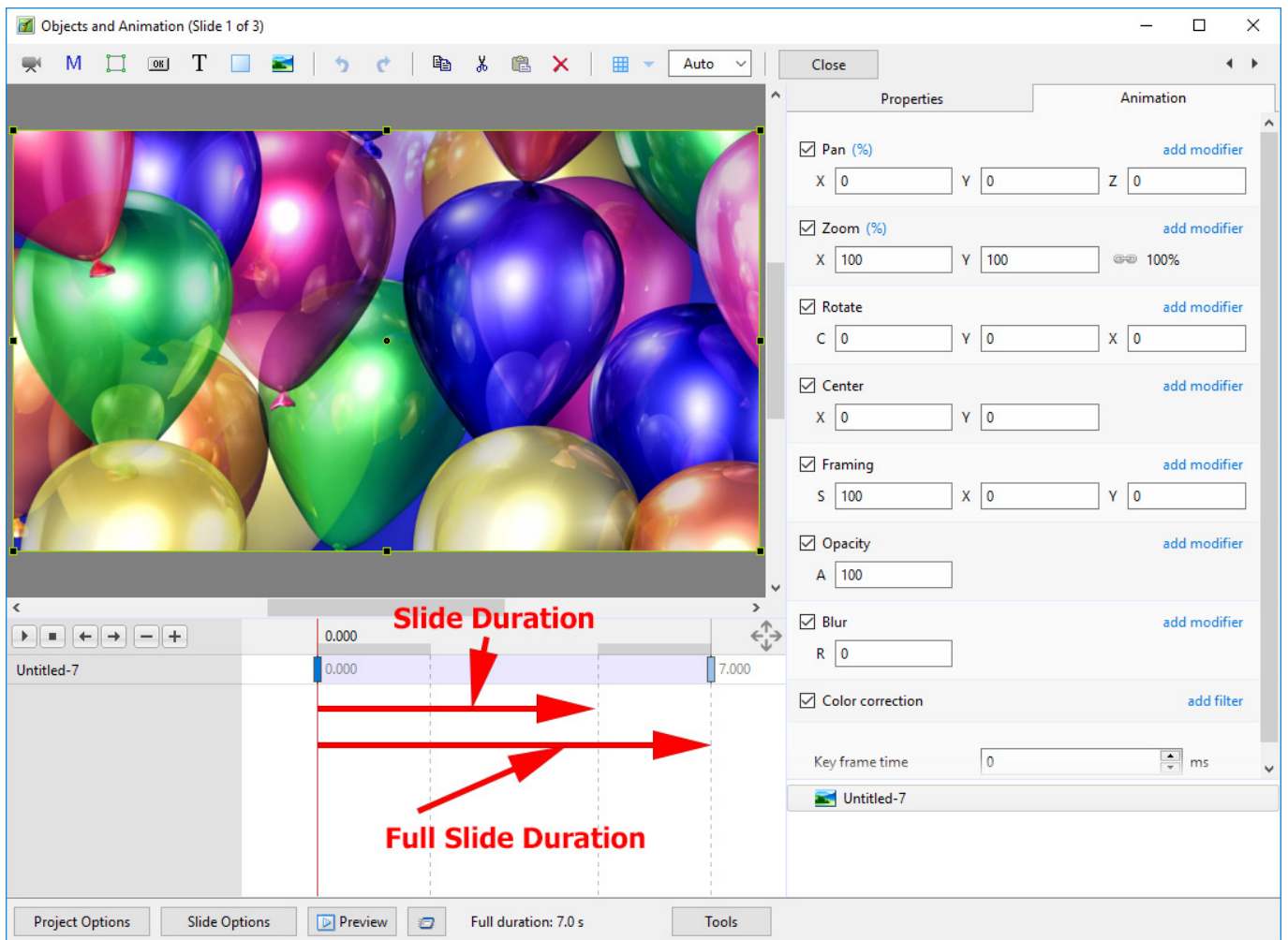
## Adding another slide

### Show Full Slide Duration Un-Ticked:

Adding a second slide with a 2 second transition time causes a change in the displayed (Slide) Duration. Note that the Full (Slide) Duration remains the same.



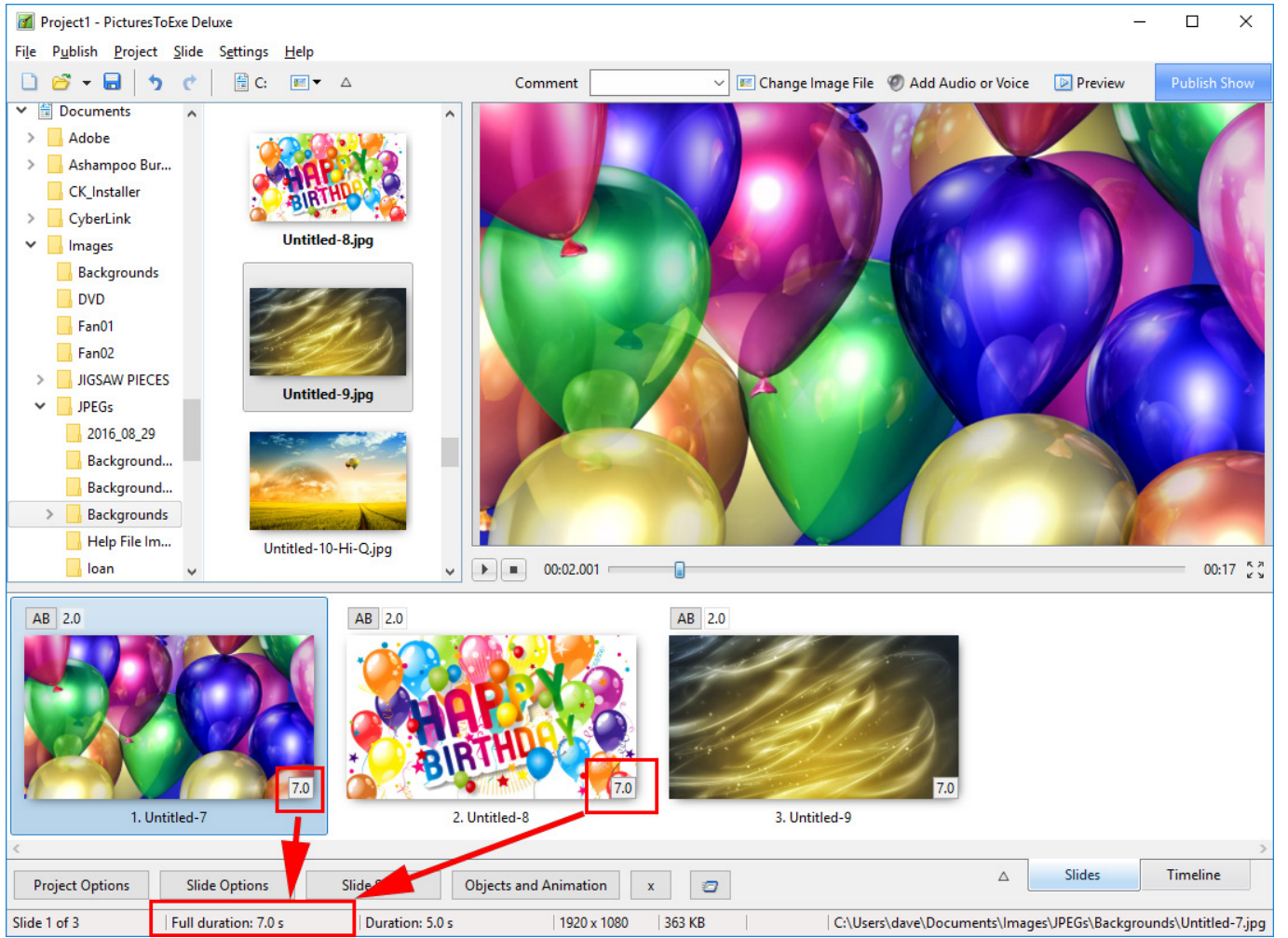
Objects and Animation View:



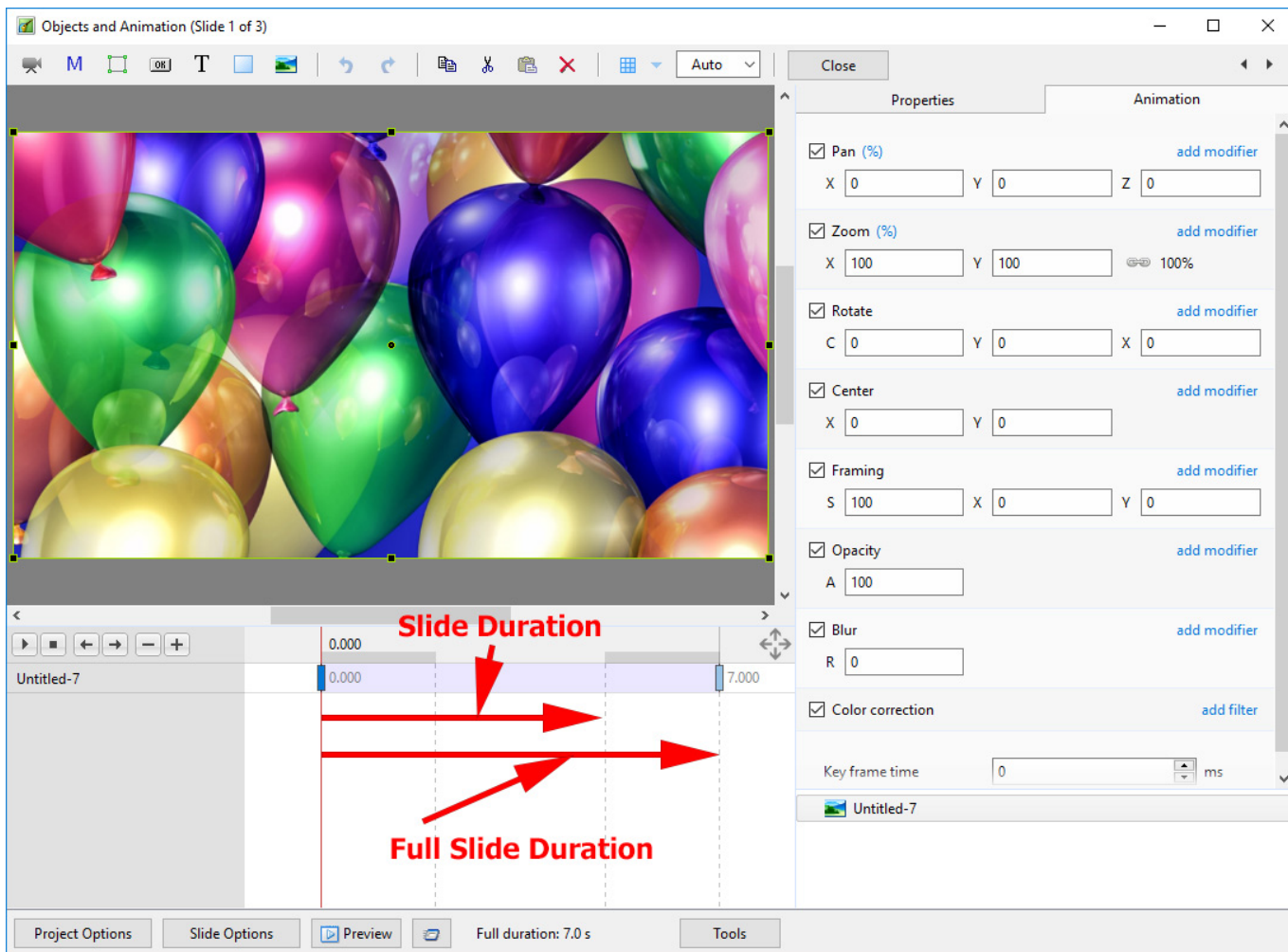
The (Slide) Duration of Slide 1 remains at 5 seconds but because Slide 1 is visible from the beginning of its own transition to the end of the Slide 2 transition (at varying opacities) its Full (Slide) Duration is 7 seconds.

### Show Full Slide Duration Ticked:

Adding a second slide with a 2 second transition time causes a change in the Duration Icon on the Slide. Note that the Full (Slide) Duration and Full (Slide) Duration remain the same.



The Objects and Animation Screen remains the same.



## Example

Key Frames in Slide 1 are placed at Zero and 7 seconds (7000ms)

Key Frames in Slide 2 are placed at 5 seconds (0ms) and 12 seconds (7000ms)

Below is a **Simulation** of two slides in Objects and Animation Screen:



The Timeline View:



The screenshot displays the PTE AV Studio interface. At the top, the menu bar includes 'File', 'Publish', 'Project', 'Slide', 'Settings', and 'Help'. Below the menu is a toolbar with icons for file operations and a 'Publish Show' button. The main workspace is divided into a file browser on the left, a preview window in the center, and a timeline at the bottom. The file browser shows a folder structure with 'Backgrounds' selected. The preview window shows a slide with colorful balloons. The timeline shows three slides: '1. Untitled-7', '2. Untitled-8', and '3. Untitled-9'. Red arrows and text labels are overlaid on the timeline to illustrate slide durations: 'Slide 1 Duration' (from 0:00 to 0:05), 'Slide 1 Full Duration' (from 0:00 to 0:07), 'Slide 2 Duration' (from 0:05 to 0:10), and 'Slide 2 Full Duration' (from 0:07 to 0:13). The status bar at the bottom shows 'Slide 1 of 3', 'Full duration: 7.0 s', 'Duration: 5.0 s', '1920 x 1080', '363 KB', and the file path 'C:\Users\dave\Documents\Images\JPEGs\Backgrounds\Untitled-7.jpg'.

From:

<https://docs.ptavstudio.com/> - PTE AV Studio

Permanent link:

[https://docs.ptavstudio.com/en-us/10.0/how\\_to\\_v9/duration](https://docs.ptavstudio.com/en-us/10.0/how_to_v9/duration)

Last update: 2022/12/19 11:48

