

Templates

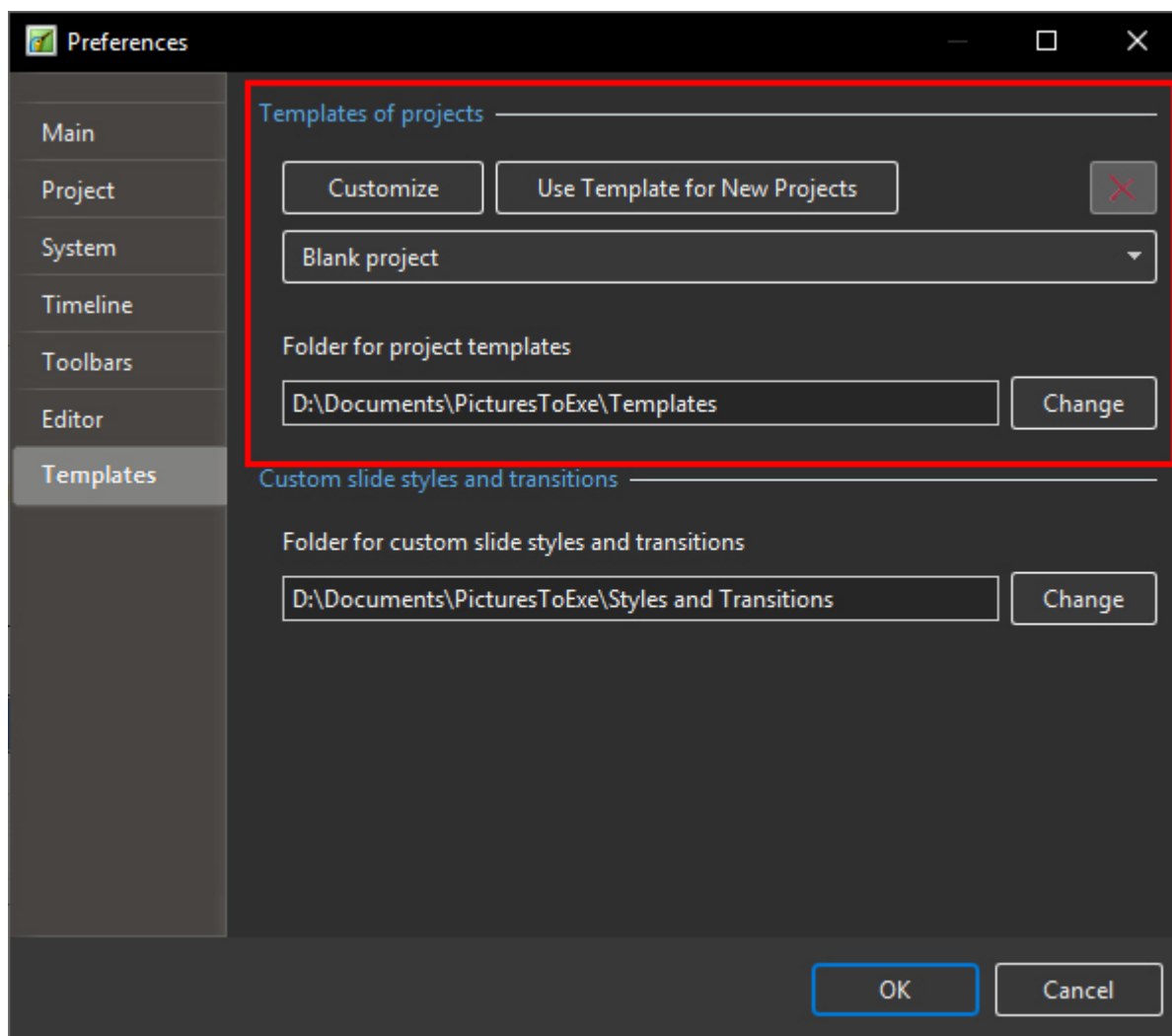
- A Template is a collection of Projection Options Settings which have been saved for future use in New Projects.
- A Template can be created of a finished Project and saved for future recall from the Templates Menu within PTE AV Studio

Custom Default Template

Do you find yourself making the same changes to Project Options for every sequence that you create? You can avoid this by creating your own customized template(s). The steps to be followed are:

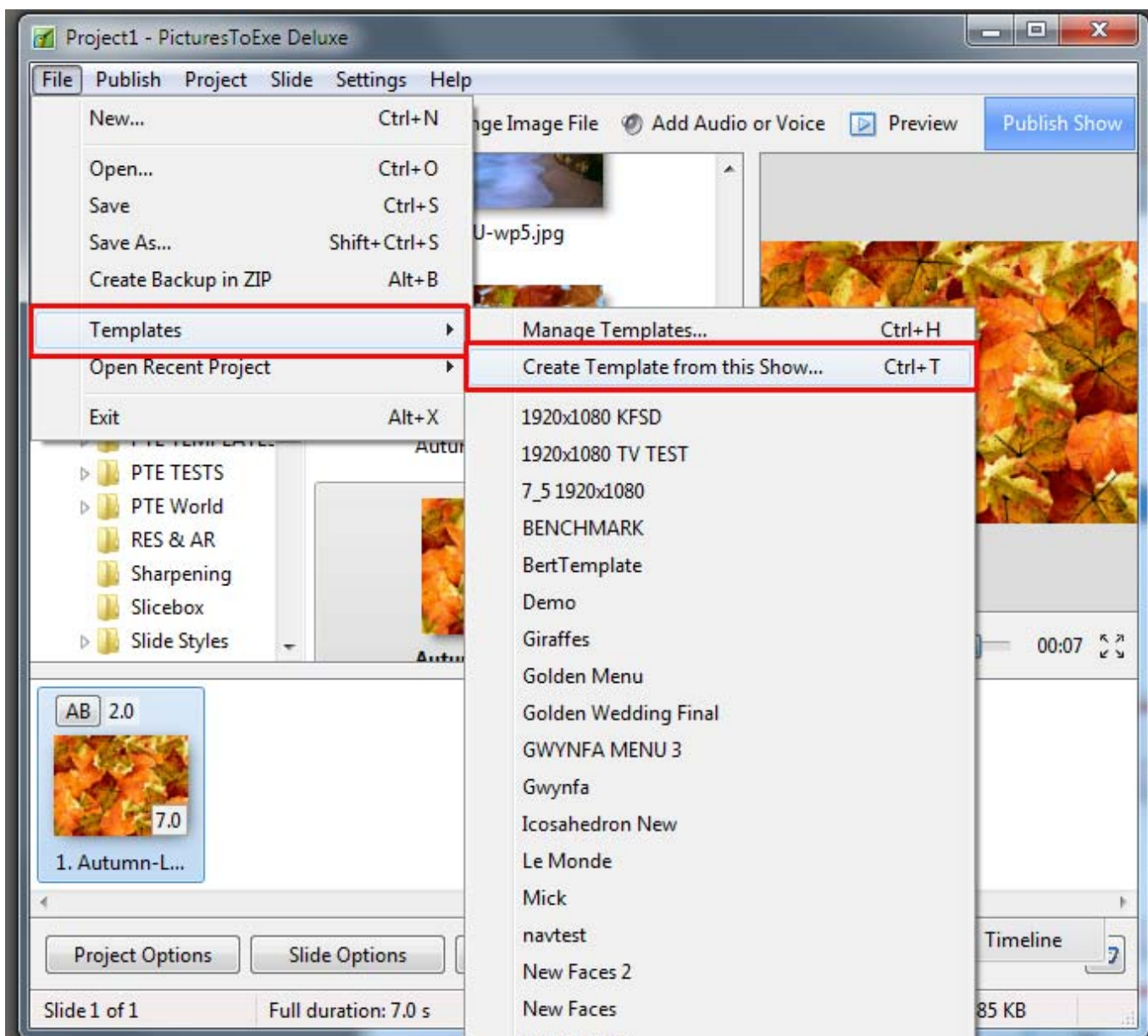
Create and Save

- Go to Settings > Preferences > Templates and make sure that the “Folder for project templates” is set to your preferred folder. If it isn't, make it so, then OK out of the Settings dialogue



- Start a new project via File > New...
- Do not add any images, videos or sounds

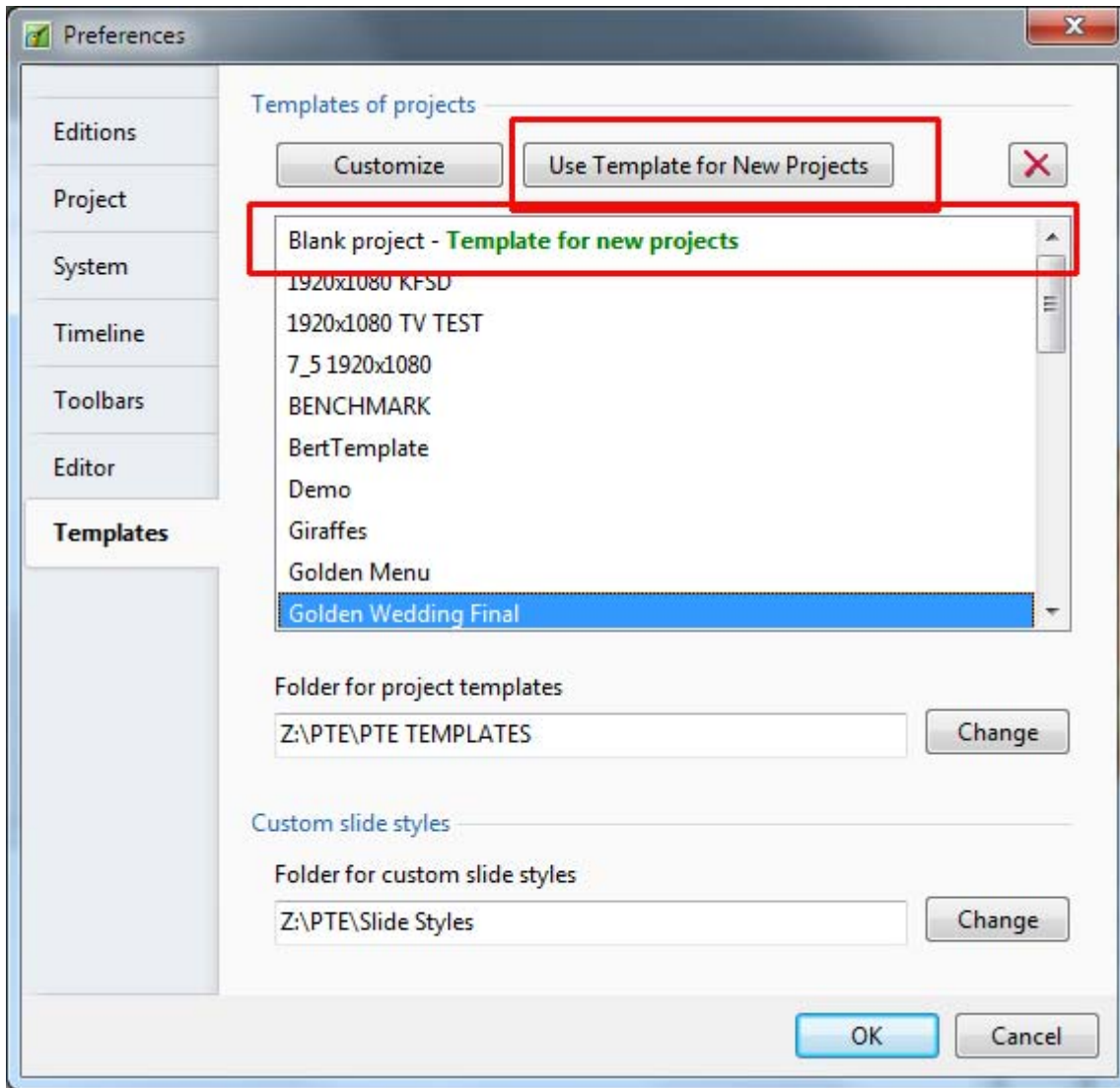
- Go into Project Options and work through each tab, setting the values that you prefer to use
- Now do File > Templates > Create Template from this Show...
- Give your template a name when prompted to do so, and OK out (do not use BLANK PROJECT)



Manage Templates

Finally, you need to make your customized template the default for all new shows. Proceed as follows:

- Do either File > Templates > Manage Templates or Settings > Preferences > Templates
- Select your customized template from the list (click on it to get it highlighted)
- Click on the button "Use Template for New Projects"
- Click on the OK button

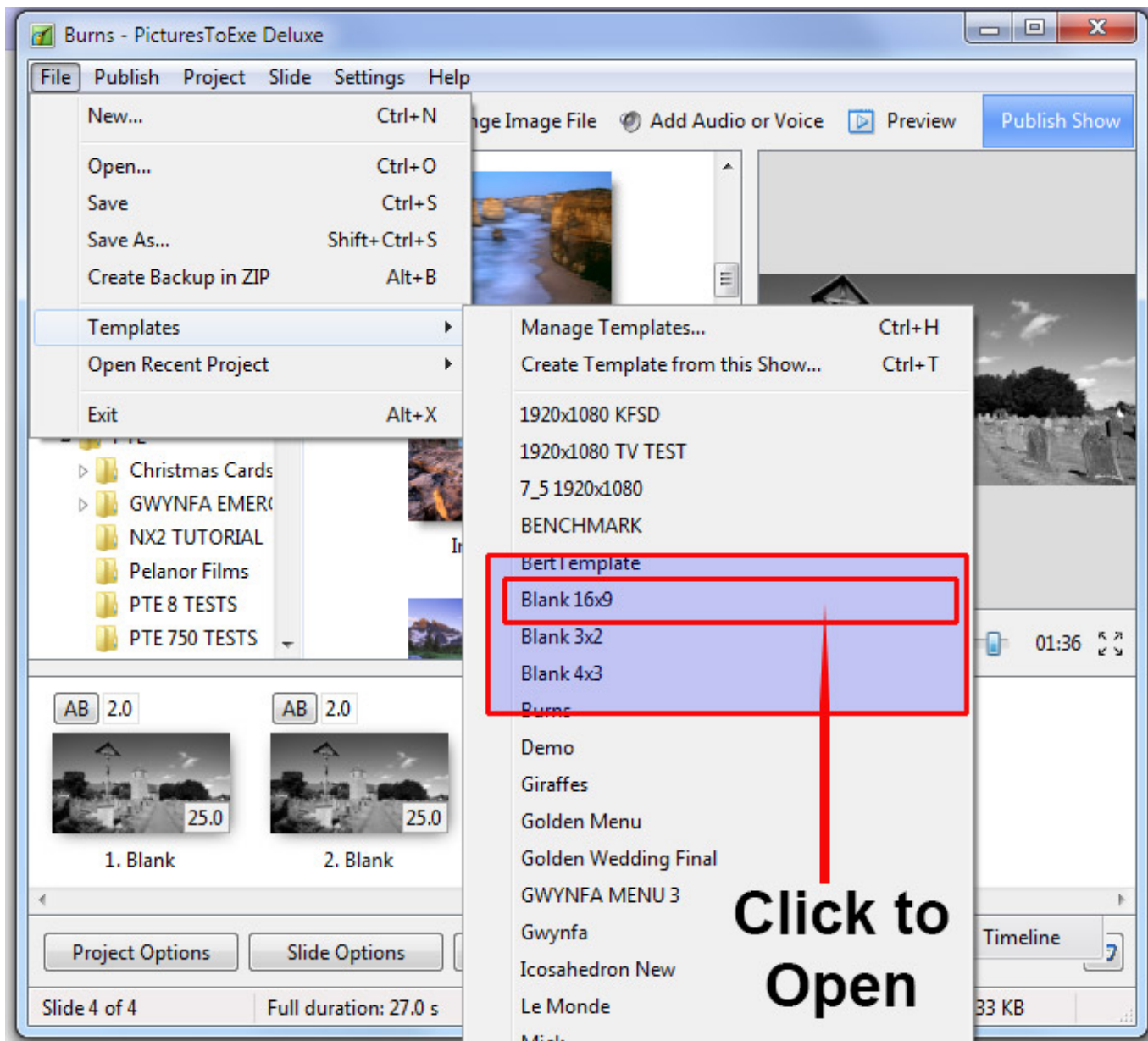


When you now click on File > New the settings of your Default Custom Template will applied every time.

Options

Optionally, it is possible to create several Custom Templates e.g. 4:3, 3:2 and 16:9 and load one of those instead of the Default Custom Template.

- Click on Templates and choose a Template from the list
- Click on the Template in the list to Open it



Delete a Template

- To deleted a Template, navigate to the “Folder for Project Templates” in File Explorer (see Settings/Preferences/Templates)
- Select the required Folder and Deleted

From: <https://docs.pteastudio.com/> - PTE AV Studio

Permanent link: https://docs.pteastudio.com/en-us/11.0/how_to_v11/templates

Last update: 2023/08/22 15:00

