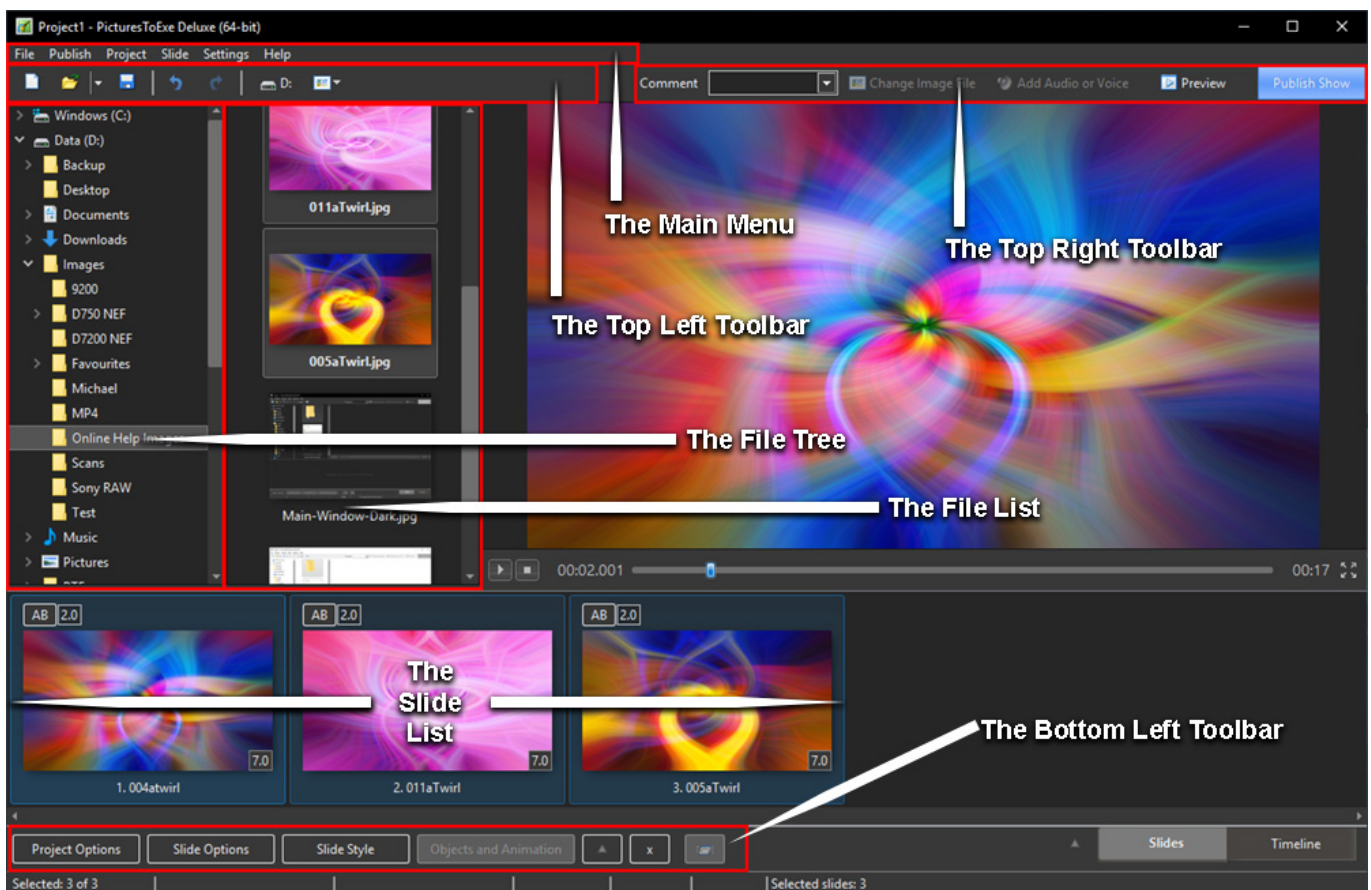


Terminology

The examples below show the placements of the various elements of the Main Screens. Please note that the placement of Tools on the various Toolbars can be configured to suit the user and might differ from the Default Tools Settings. See [Toolbars](#)

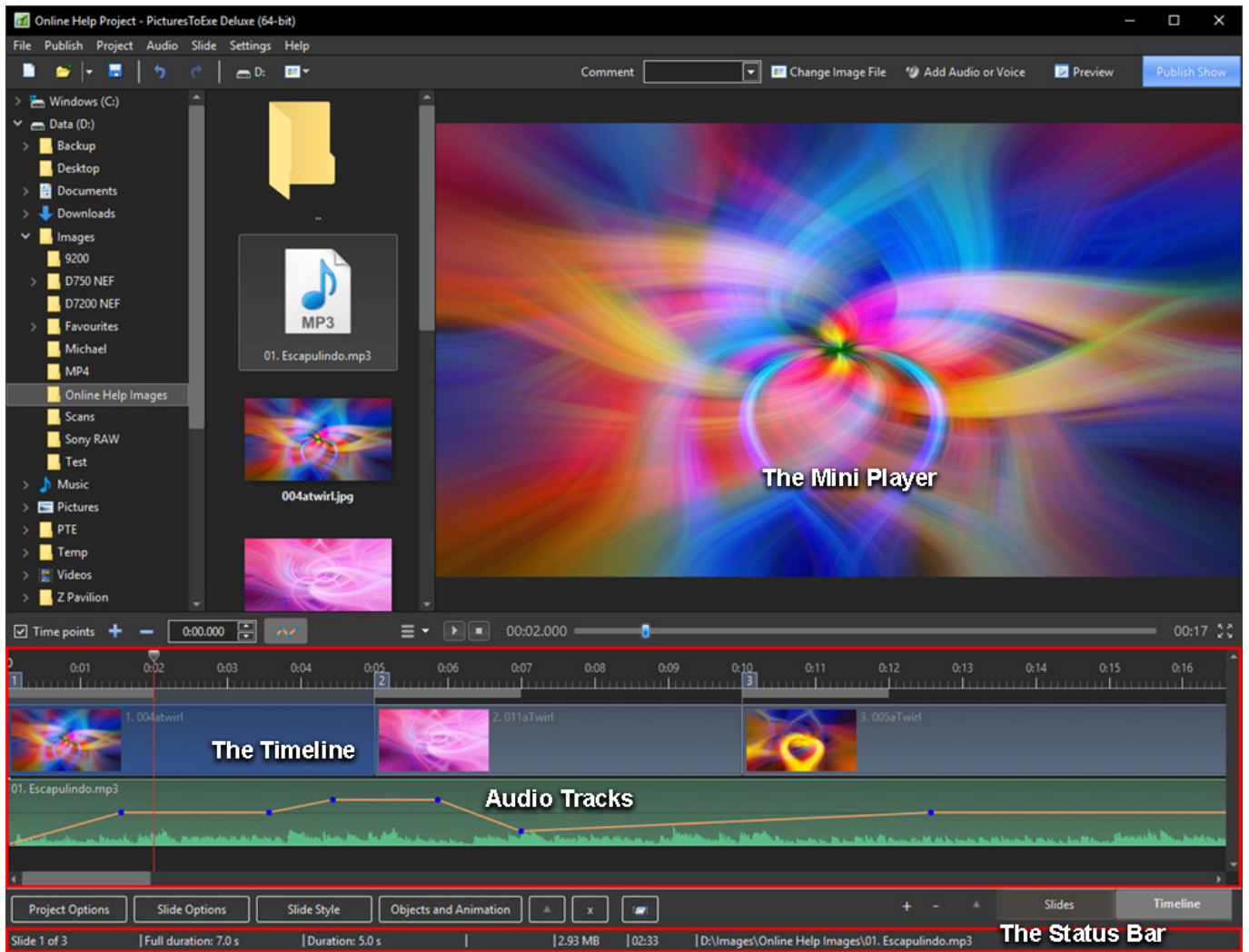
The Slides View

- The Main Menu
- The Top-Left Toolbar
- The Top-Right Toolbar
- The File Tree
- The File List
- The Slide List
- The Bottom-Left Toolbar



The Timeline View

- The Mini Player
- The Timeline
- The Audio Tracks
- The Status Bar



For more information on Tools and Toolbars see [Toolbars](#)

For more information on the Slide List and adding Image Files, see [Slide List View](#)

For more information on the Timeline, see [Timeline View](#)

For more information on adding audio files, see [Handling Audio Files](#)

From:
<https://docs.pteamstudio.com/> - **PTE AV Studio**

Permanent link:
https://docs.pteamstudio.com/en-us/11.0/main-window_1/terminology

Last update: **2023/02/20 15:59**

