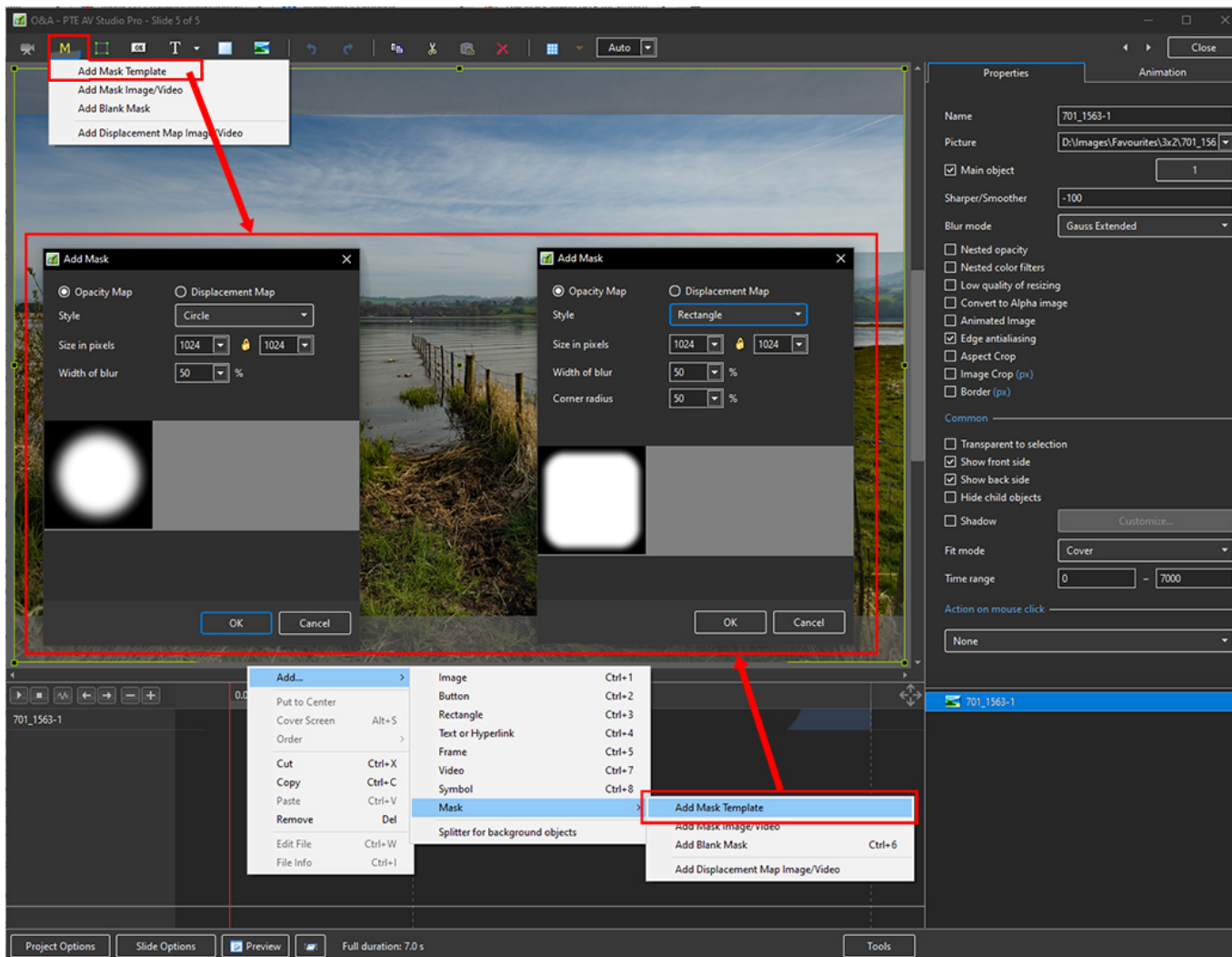
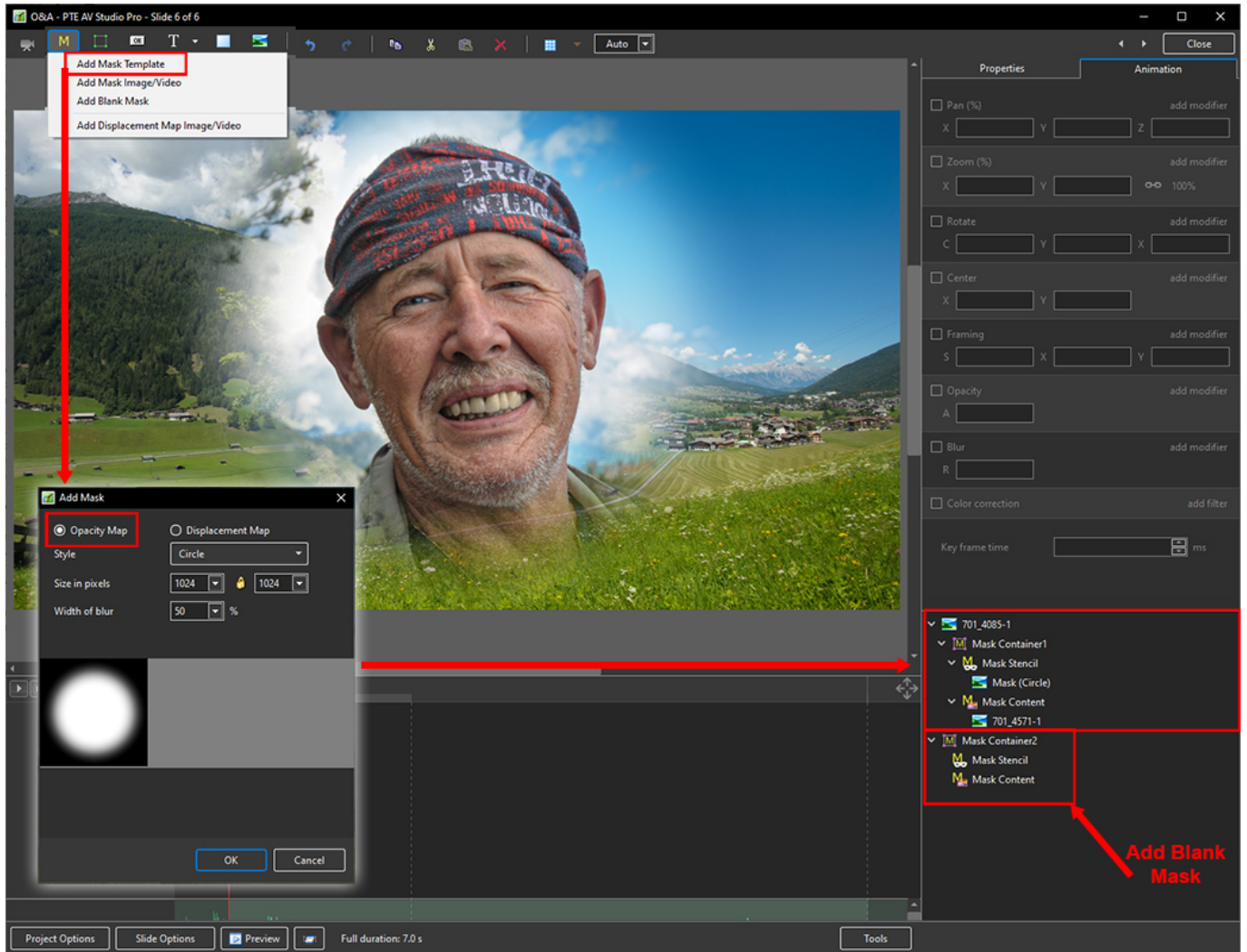


The Mask Menu

See also the topic on Masks here : [Add a Mask Object](#)

- Click on the Mask Icon or
- Right Click in a blank space
- Click on “Add a Mask Template”
- Choose “Circle” or “Rectangle”



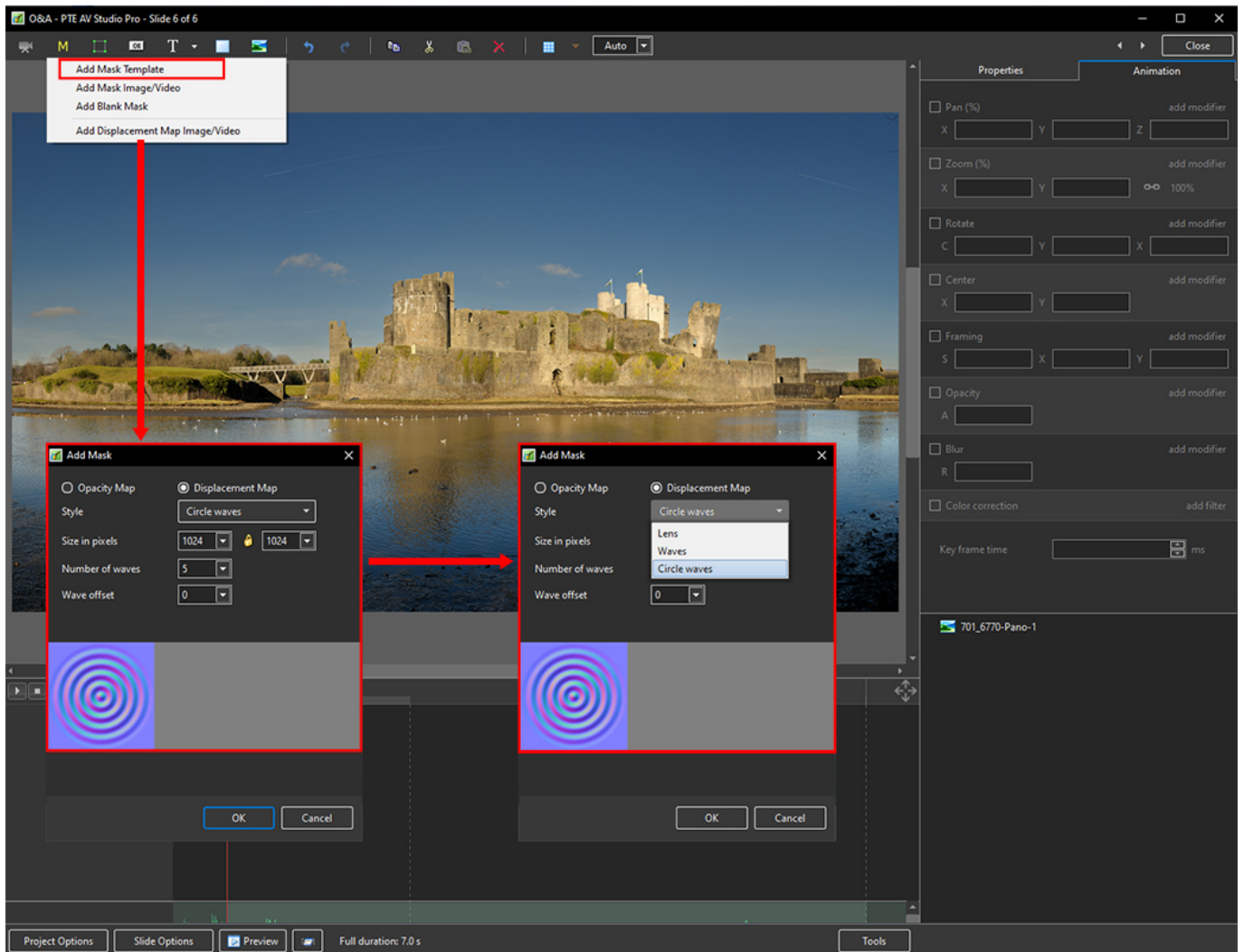


- You can use any object as a masking layers in Mask Stencil container
- Remember - White Reveals and Black Conceals
- For example, use a White Text object as a mask

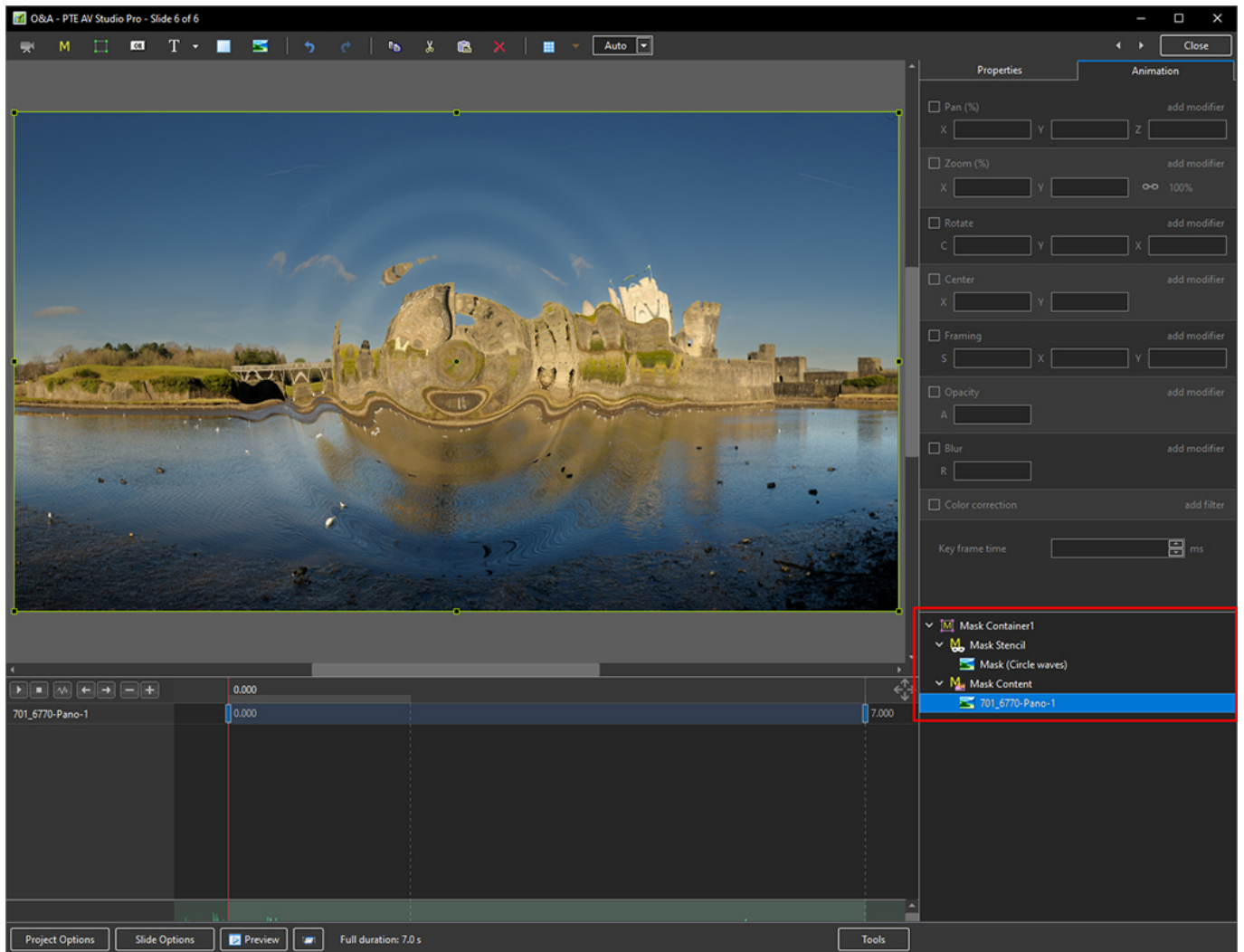


Displacement Map Effect

- Choose Add a Mask Template
- Choose Displacement Map
- Choose type of effect from dropdown Menu



- Click OK to Apply
- The effect can be varied (Zoom; Pan etc) between key frames by adjusting the Mask



From:
<https://docs.pteamstudio.com/> - **PTE AV Studio**

Permanent link:
https://docs.pteamstudio.com/en-us/11.0/objectsandanimation_1/masks

Last update: **2023/02/08 12:48**

