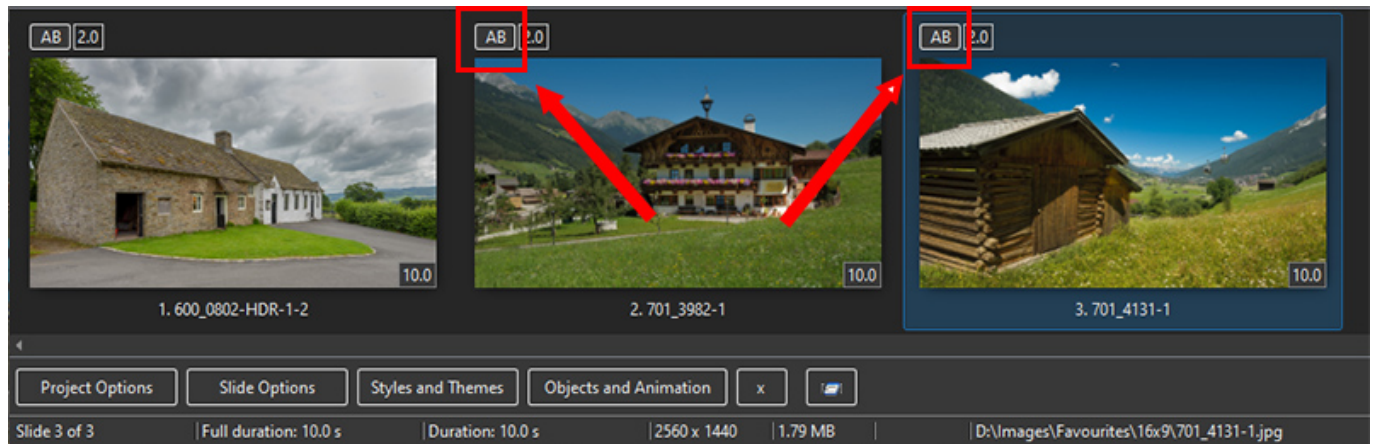
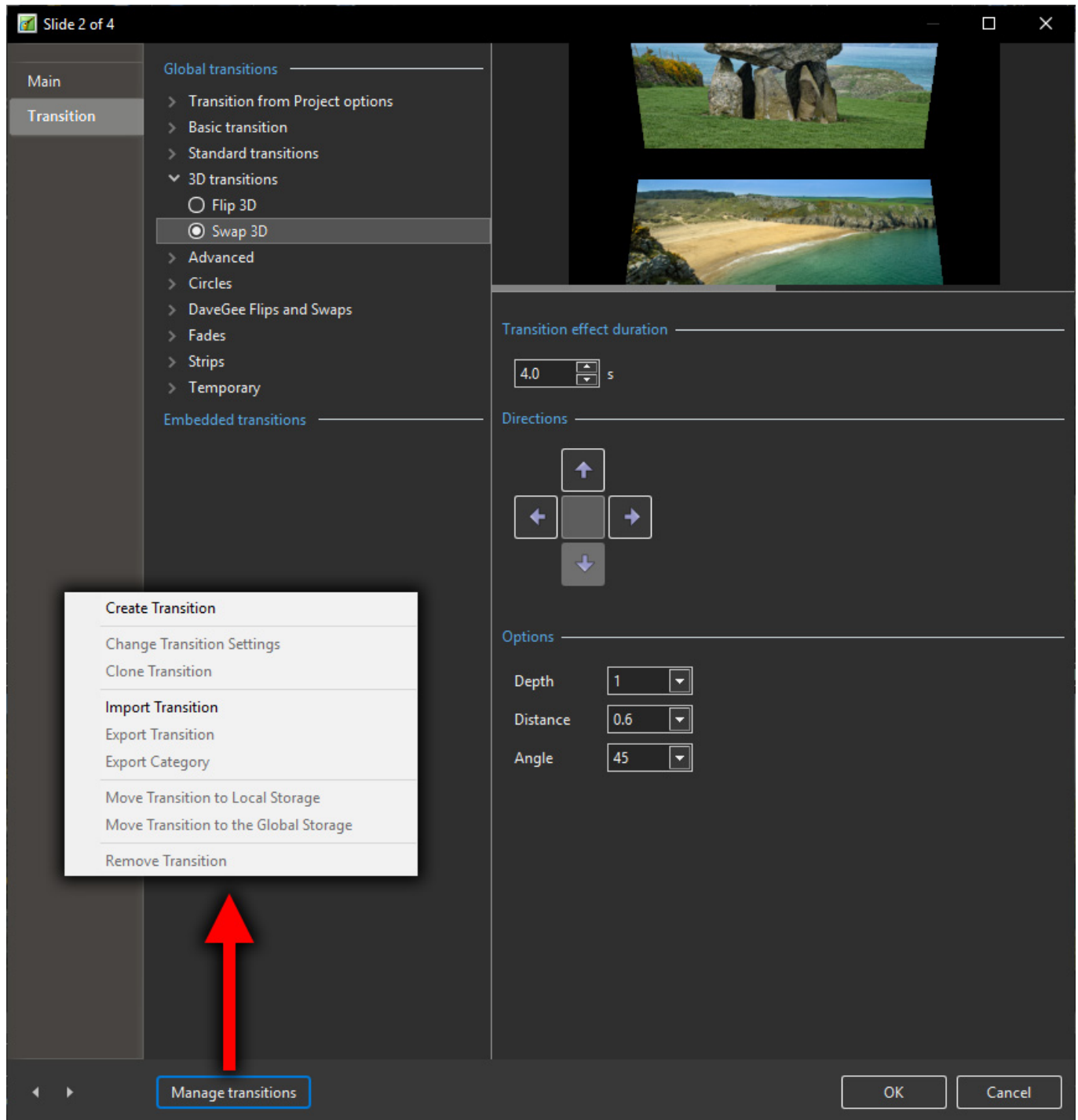


# Custom Transitions

- Choose a Slide in the Slide List
- Click on the “AB” Transition Button



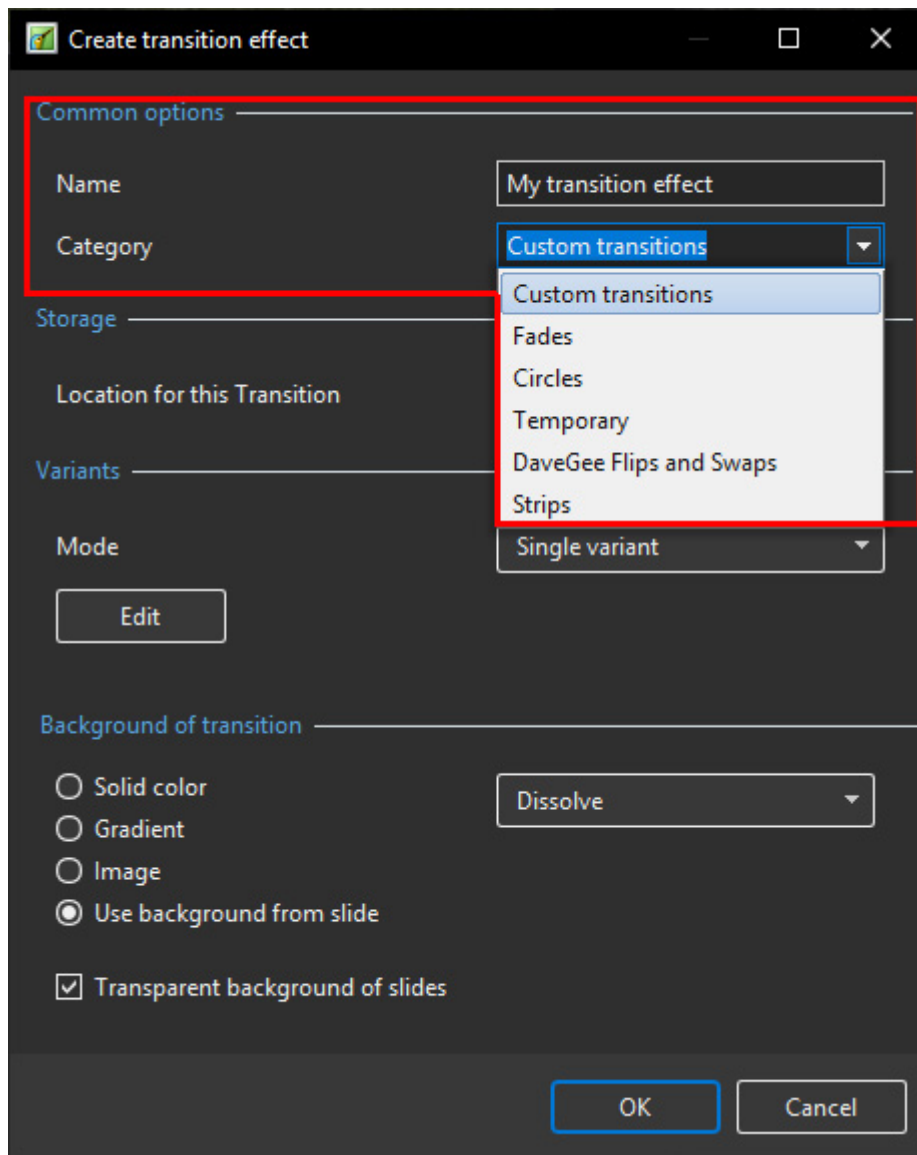
- Click on **Manage Transitions**



- Custom Transitions can be saved either in the “Global Storage” or “Embedded” into the Current Project
- Click on Create Transition to enter the “Create Transition Effect” Editor

## Create Transition

- Choose a Name for the Custom Transition
- Choose a Category from the dropdown Menu
- Or, type a Name into the Category Box to create a new Category



- **Storage Options:**

**Create transition effect**

**Common options**

Name: My transition effect

Category: Custom transitions

**Storage**

Location for this Transition: In the global storage (selected), In this project

**Variants**

Mode: Single variant

Edit

**Background of transition**

☐ Solid color

☐ Gradient

☐ Image

☒ Use background from slide

☒ Transparent background of slides

Dissolve

OK Cancel

- By choosing “Global Storage” the Custom Transition will be available for future projects
- CT's in the Global Storage can be Cloned and Moved to the Embedded Transitions area (current project)
- By choosing “This Project” the Custom Transition will be available in this project only
- **Choose from the Variant Options:**

Create transition effect

Common options

Name

My transition effect

Category

Custom transitions

Storage

Location for this Transition

In the global storage

Mode

Single variant

Edit

Single variant

Multiple variants - list

Multiple variants - buttons

Background of transition

☐ Solid color

☐ Gradient

☐ Image

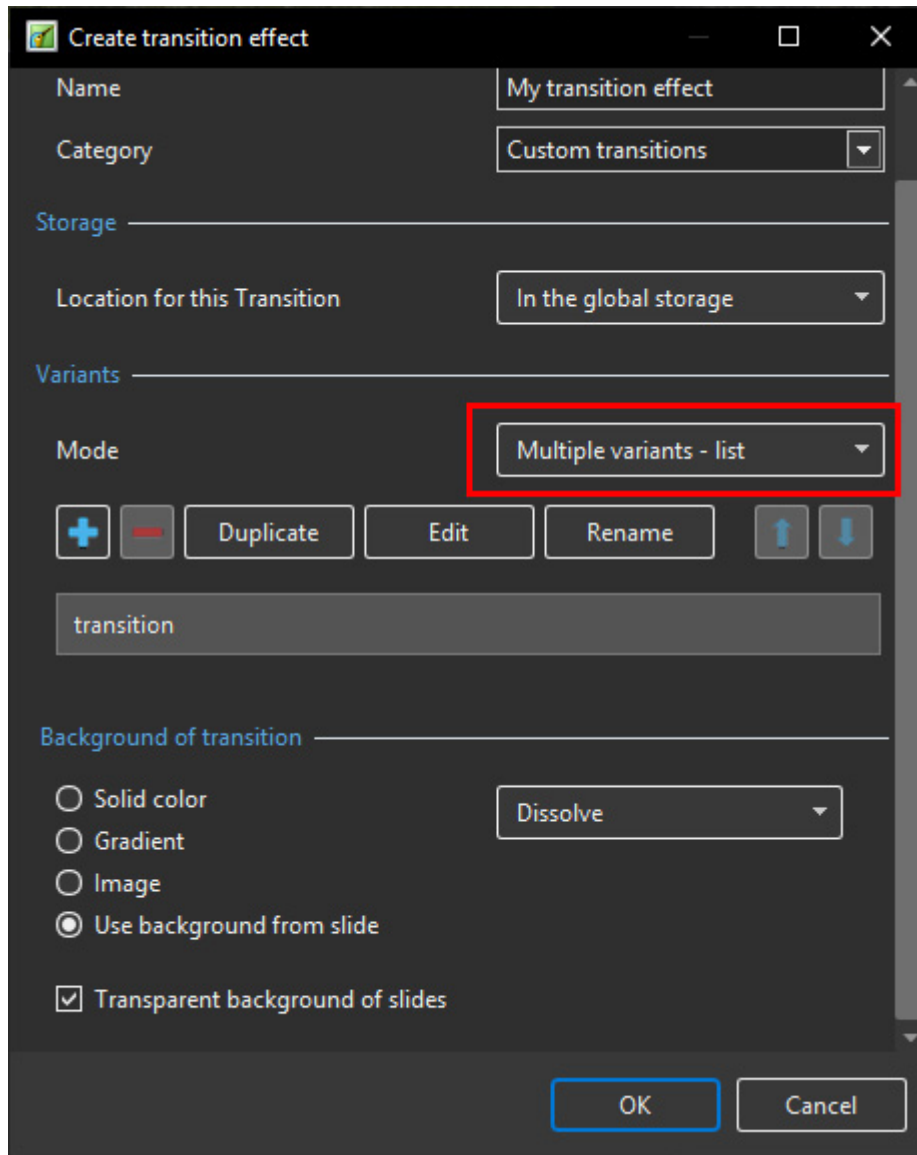
☒ Use background from slide

Dissolve

☒ Transparent background of slides

OK

Cancel



**Create transition effect**

Name: My transition effect

Category: Custom transitions

Storage

Location for this Transition: In the global storage

Variants

Mode: Multiple variants - list

+ - Duplicate Edit Rename ↑ ↓

transition

Background of transition

☐ Solid color

☐ Gradient

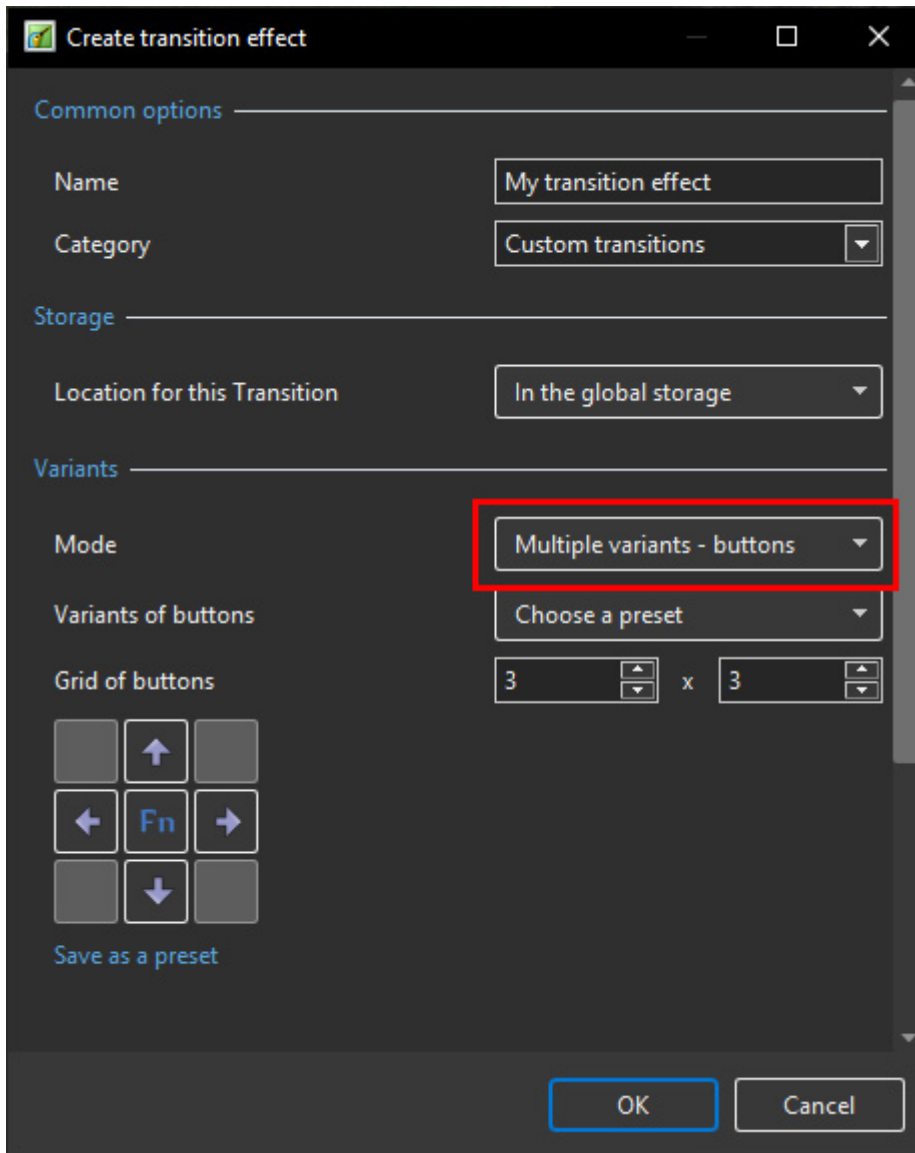
☐ Image

☒ Use background from slide

☒ Transparent background of slides

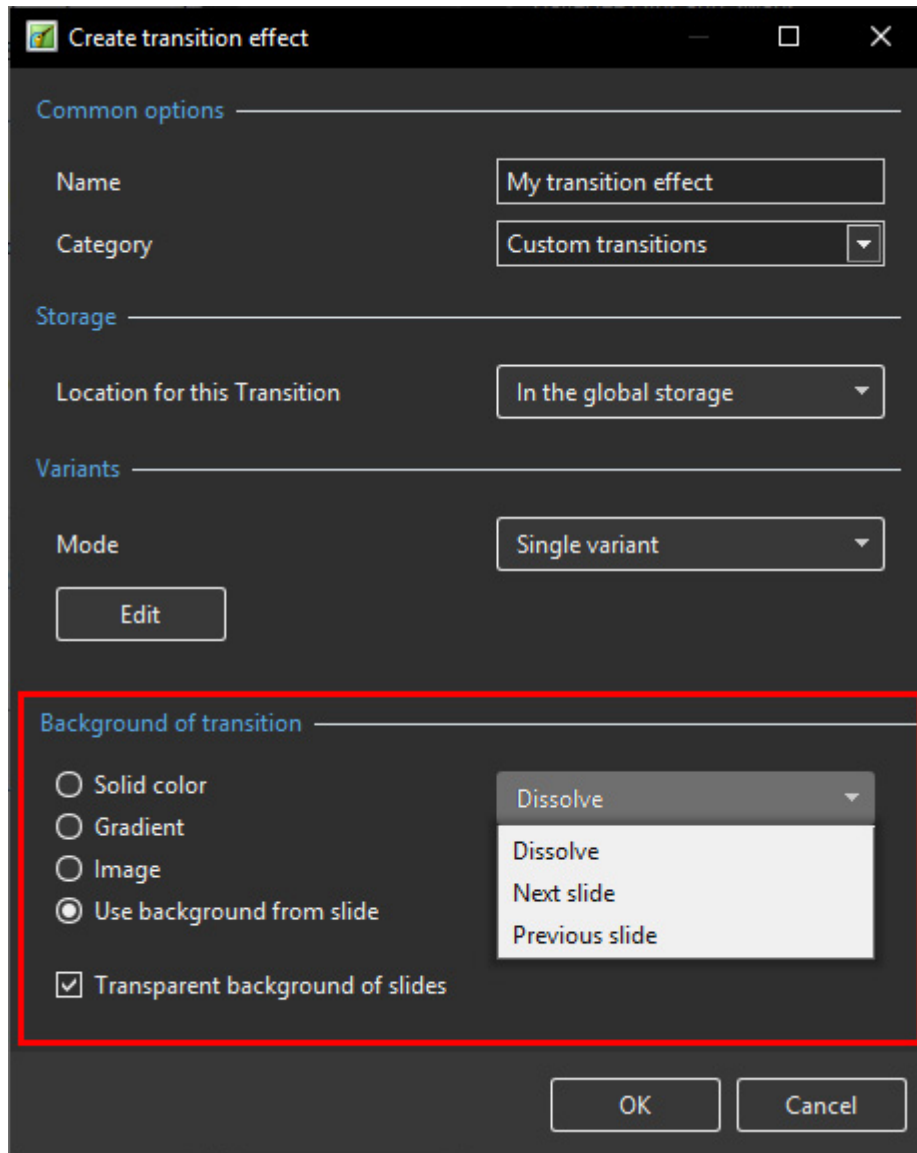
Dissolve

OK Cancel



## Choose Background Options

- Background Solid Colour - Choose a Colour for the Background of the Transition
- Gradient - Choose a two colour Gradient for the Background of the Transition
- Image - Choose an Image for the Background of the Transition
- Use Background from Slide (Default) - This option chooses to use a Background added via Slide Options or the Splitter as the Background of the Transition
  - The Splitter Background overrides the Slide Options Background
  - Further Options are to Dissolve between Slide One and Slide Two Backgrounds or use the Slide One or Slide Two Background during the Transition
- Transparent Background of Slides (Default) - This Option chooses whether a Main Image at less than 100% of Full Screen animates independent of its Background



**Create transition effect**

**Common options**

Name: My transition effect

Category: Custom transitions

**Storage**

Location for this Transition: In the global storage

**Variants**

Mode: Single variant

Edit

**Background of transition**

☐ Solid color

☐ Gradient

☐ Image

☒ Use background from slide

☒ Transparent background of slides

Dissolve

Dissolve

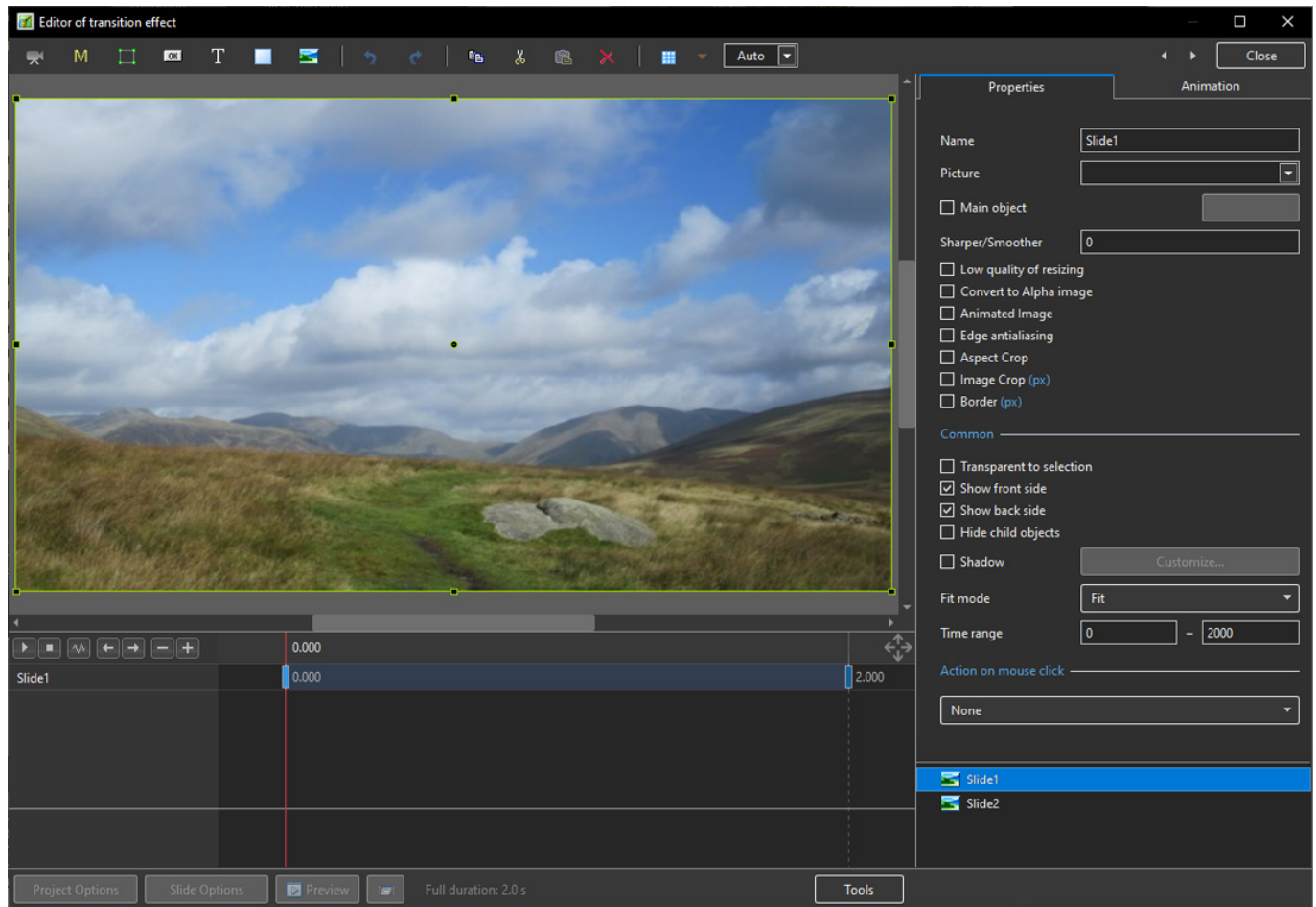
Next slide

Previous slide

OK Cancel

## Single Variant





- The Aspect Ratio is automatically chosen to suit the Project Options AR

## Multi Variant - List

**Create transition effect**

**Common options**

Name: My transition effect

Category: Custom transitions

**Storage**

Location for this Transition: In the global storage

**Variants**

Mode: Multiple variants - list

+ - Duplicate Edit Rename ↑ ↓

Variant 1

Variant 2

Variant 3

**Background of transition**

☐ Solid color ☐ Gradient ☐ Image ☒ Use background from slide

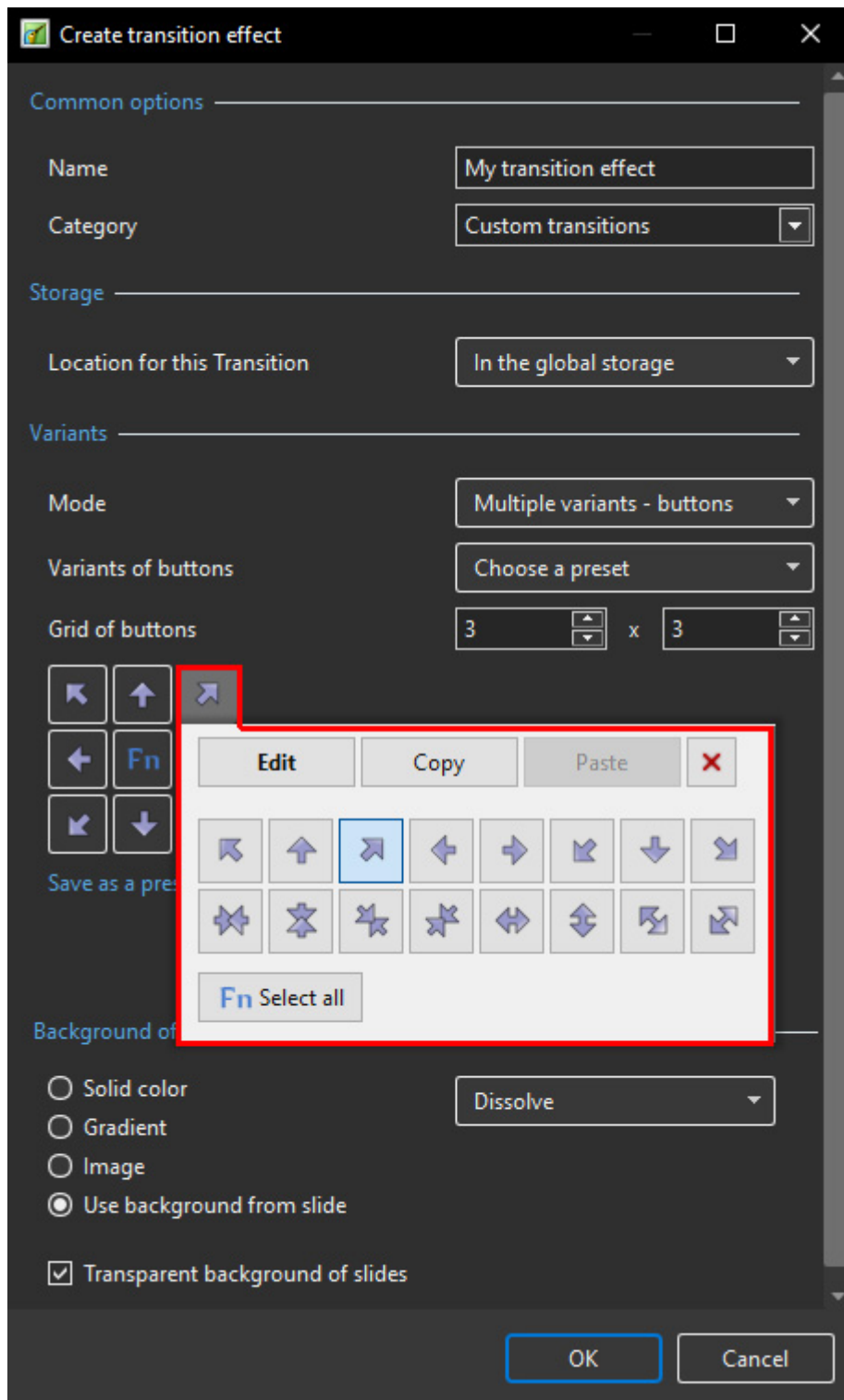
☒ Transparent background of slides

Dissolve

OK Cancel

- Click on “+” to add a Variant to the List
- Click on “-” to Delete a Variant
- Click on Edit to proceed to the Editor
- Close the Editor Window by clicking on the “X” at top right to return to this Window
- Click on OK to Save

## Multi Variant - Buttons



- Choose a Preset Variant
- Click on an Arrow Button
- Click on Edit to proceed to the Editor
- Close the Editor Window by clicking on the "X" at top right to return to this Window
- Click on OK to Save

**After Creating a Custom Transition it would be good practice to Export it to a folder somewhere on your HD called "Exported Slide Styles"**

## Global vs Embedded Transitions

- The **Global Transitions** section contains both the Preset PTE Transitions and the Custom Transitions which you can Create yourself or Import from the Forum etc.
- The “Manage Transitions” button has a dropdown menu which allows the Option to “Clone” a Custom Transition
- The Cloned Copy can then be either edited to create a Variation or “Moved to the Local Storage” (**Embedded Transitions**)
- When creating a “Backup in ZIP” (BIZ) to export to another PC which might not have the Custom Transition it is included for use when the BIZ is unzipped
- The Global Custom Transitions are Embedded in Executable files

## Import Custom Transitions

- Custom Transitions use the “.pteeff” Suffix
- Choose a Folder for Custom Transitions in Settings / Preferences / Templates
- All downloaded or otherwise acquired Custom Transitions should be stored in this folder
- Click on the AB Transition Button
- In the Transitions Tab click on Manage Transitions / Import Transition
- Navigate to the folder for Custom Transitions and choose the Custom Transition to be Imported
- Choose a Custom Transition to be Imported and click on Open
- The Custom Transition will be loaded in to the Custom Transition Section

## Embedded Transitions

- To Move a Custom Transition to the Embedded Transition Section highlight the Transition and use the Right Click Menu and choose “Move Transition to Local Storage”
- Alternatively highlight the Transition and click on Manage Transitions and choose “Move Transition to Local Storage”
- Custom Transitions can also be “Cloned” before moving to the local storage
- Embedded Transitions (Local Storage) are saved in the Project

## Export Custom Transitions

- Custom Transitions use the “.pteeff” Suffix
- Choose a Folder for Custom Transitions in Settings / Preferences / Templates
- All downloaded or otherwise acquired Custom Transitions should be stored in this folder
- Click on the AB Transition Button
- In the Transitions Tab click on the Custom Transition to be Exported
- Click on Manage Transitions / Export Transition
- Navigate to the folder for Custom Transitions and click on Save

From:

<https://docs.ptavstudio.com/> - **PTE AV Studio**

Permanent link:

<https://docs.ptavstudio.com/en-us/10.0/customtransition/main>

Last update: **2022/12/19 11:48**

