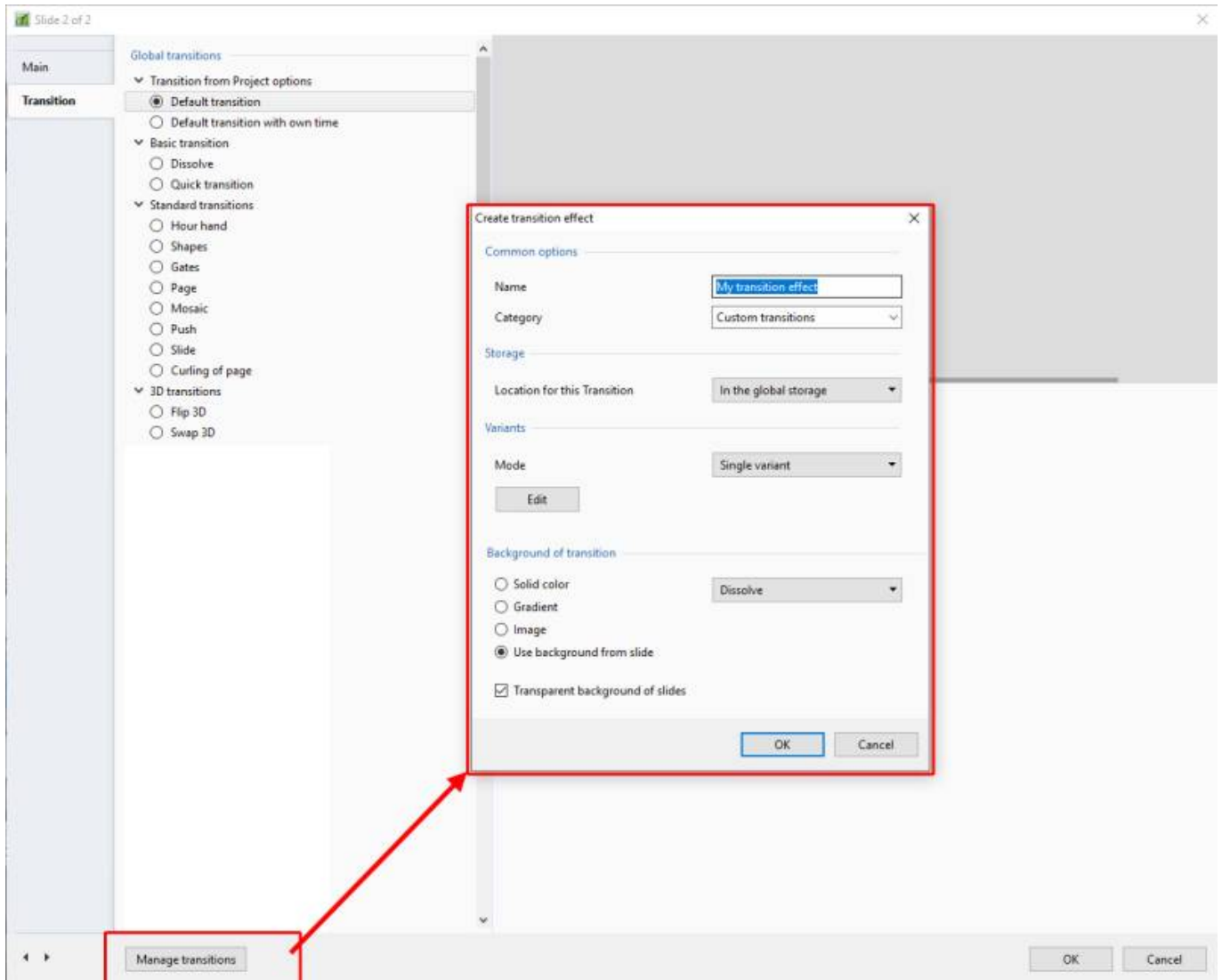


Create Custom Transitions

- To Enter the Custom Transition Effect Window click on the AB symbol in a slide or:
- Click on Project Options / Transitions
- Then click on the Manage Transitions button



- Give the Transition a descriptive name
- Choose an existing Category or Type in a New Category Name
- Next, choose a Variant

Create transition effect [X]

Common options

Name: My transition effect

Category: Custom transitions

Storage

Location for this Transition: In the global storage

Variants

Mode: **Single variant** (dropdown menu open showing: Single variant, Multiple variants - list, Multiple variants - buttons)

[Edit]

Background of transition

Solid color

Gradient

Image

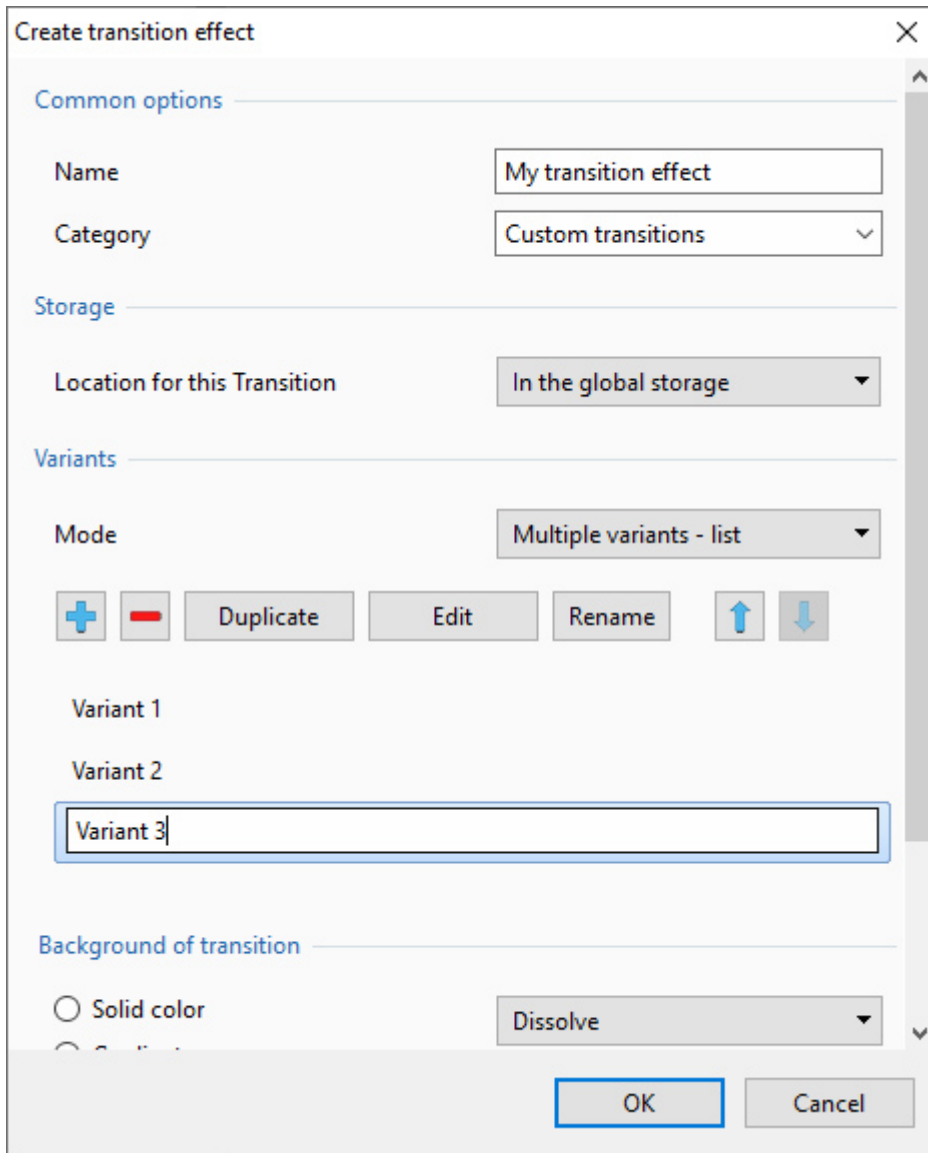
Use background from slide

Transparent background of slides

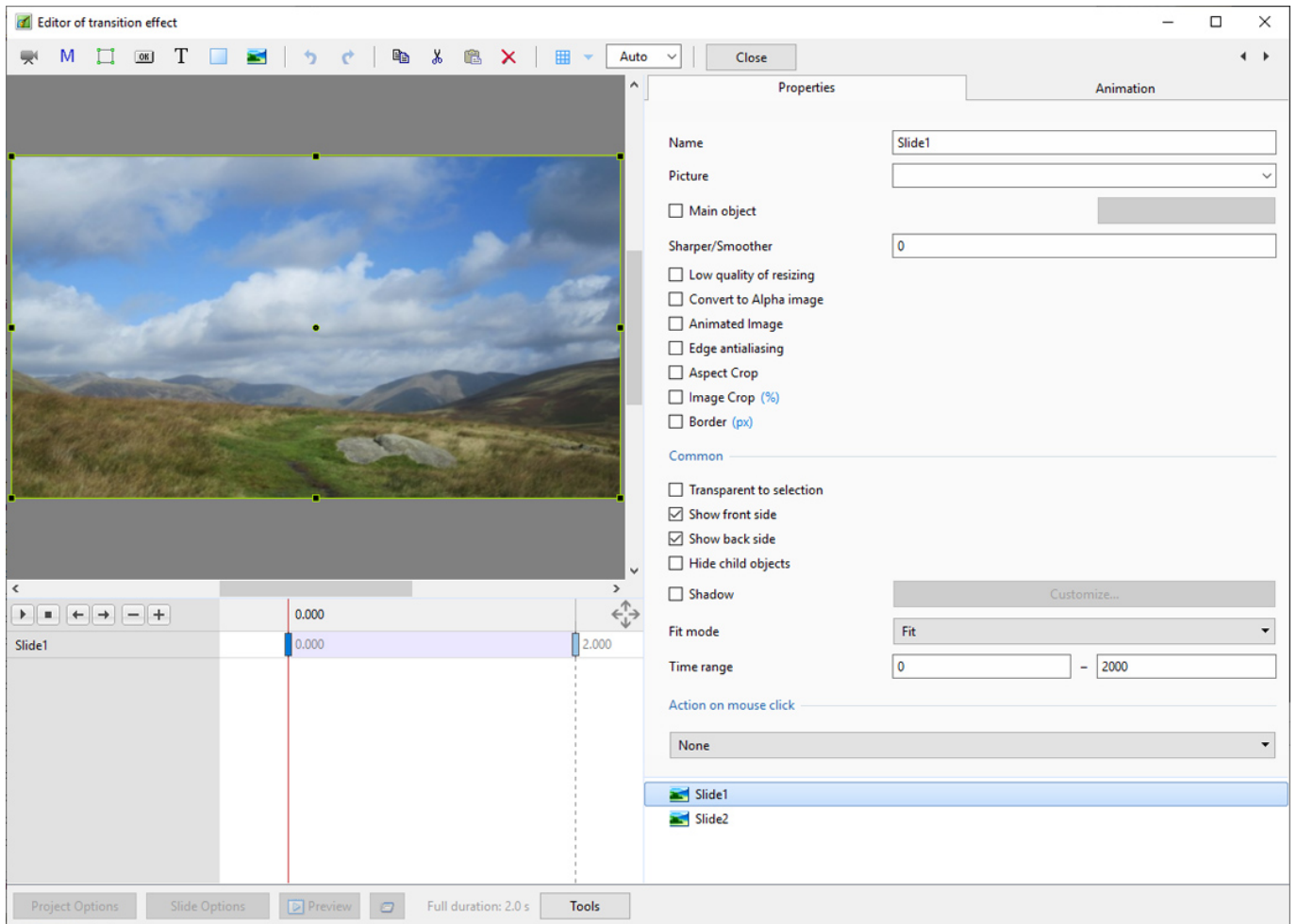
Dissolve

[OK] [Cancel]

- E.g. Multi Variant - List



- Click on “+” to add a Variant
- Click on “-” to delete the selected Variant
- Click on “Rename” to give the Variant an appropriate Name
- Click on “Edit” to enter the “Editor of Transition Effect” Window



From:
<https://docs.pteastudio.com/> - **PTE AV Studio**

Permanent link:
https://docs.pteastudio.com/en-us/10.0/how_to_v9/customtransitions

Last update: **2022/12/19 11:48**

