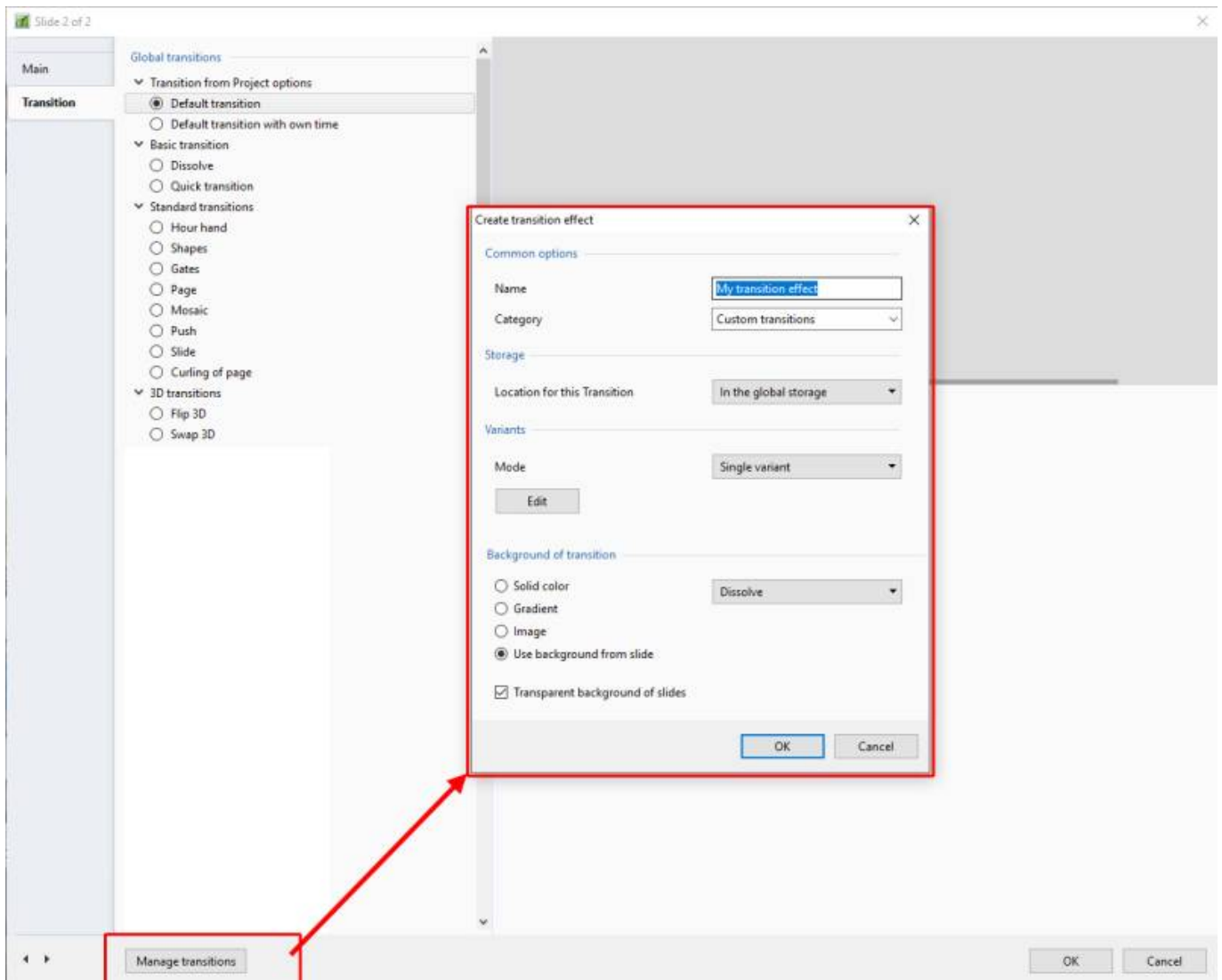


# Create Custom Transitions

- To Enter the Custom Transition Effect Window click on the AB symbol in a slide or:
- Click on Project Options / Transitions
- Then click on the Manage Transitions button



- Give the Transition a descriptive name
- Choose an existing Category or Type in a New Category Name
- Next, choose a Variant

**Create transition effect** [X]

**Common options**

Name: My transition effect

Category: Custom transitions

**Storage**

Location for this Transition: In the global storage

**Variants**

Mode: **Single variant** (dropdown menu open showing: Single variant, Multiple variants - list, Multiple variants - buttons)

Edit

**Background of transition**

Solid color

Gradient

Image

Use background from slide

Transparent background of slides

Dissolve

OK Cancel

- E.g. Multi Variant - List

Create transition effect

Common options

Name

Category

Storage

Location for this Transition

Variants

Mode

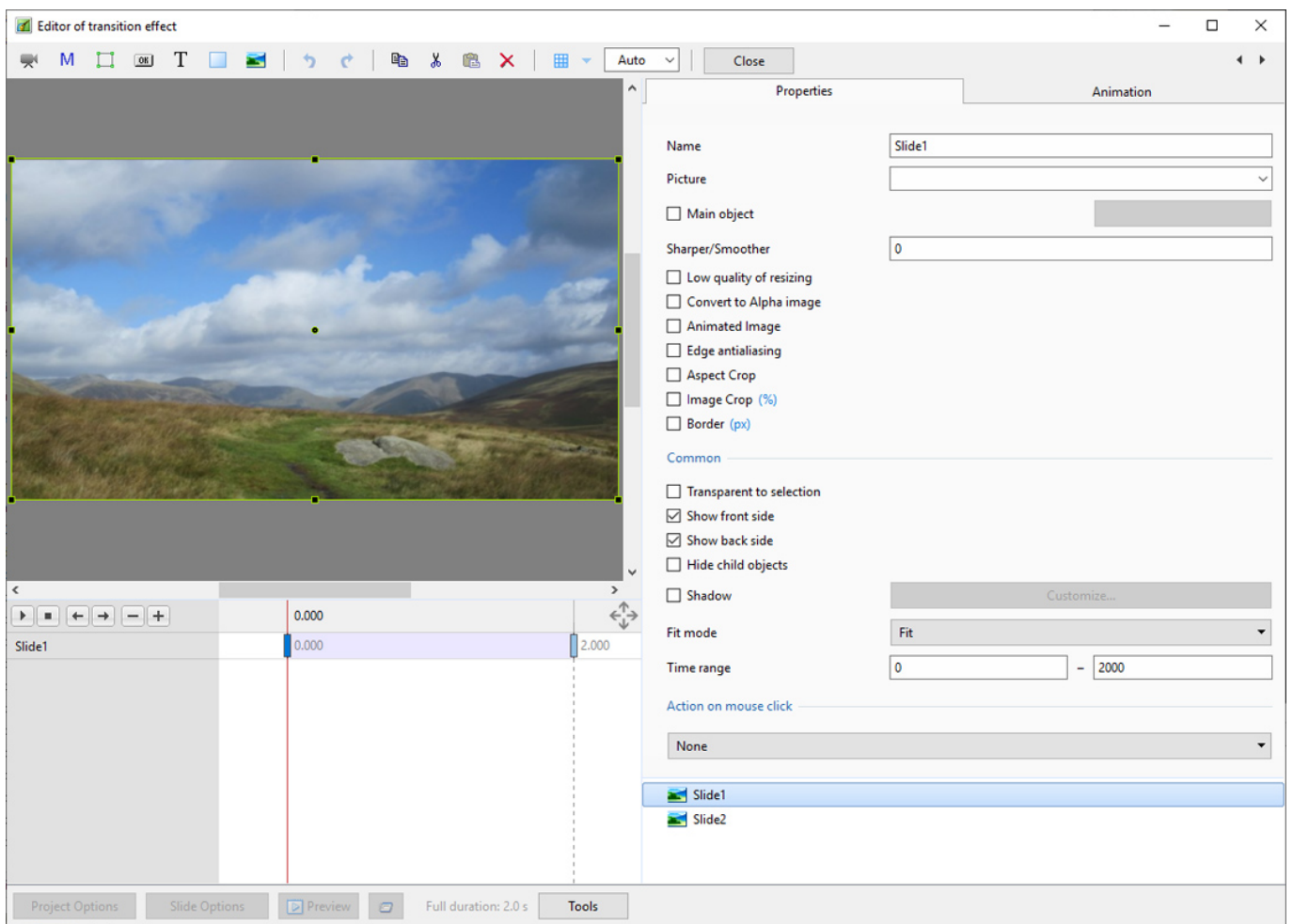
Variant 1

Variant 2

Background of transition

Solid color

- Click on “+” to add a Variant
- Click on “-” to delete the selected Variant
- Click on “Rename” to give the Variant an appropriate Name
- Click on “Edit” to enter the “Editor of Transition Effect” Window



From: <https://docs.pteastudio.com/> - **PTE AV Studio**

Permanent link: [https://docs.pteastudio.com/en-us/10.0/how\\_to\\_v9/customtransitions?rev=1581509584](https://docs.pteastudio.com/en-us/10.0/how_to_v9/customtransitions?rev=1581509584)

Last update: **2022/12/19 11:45**

