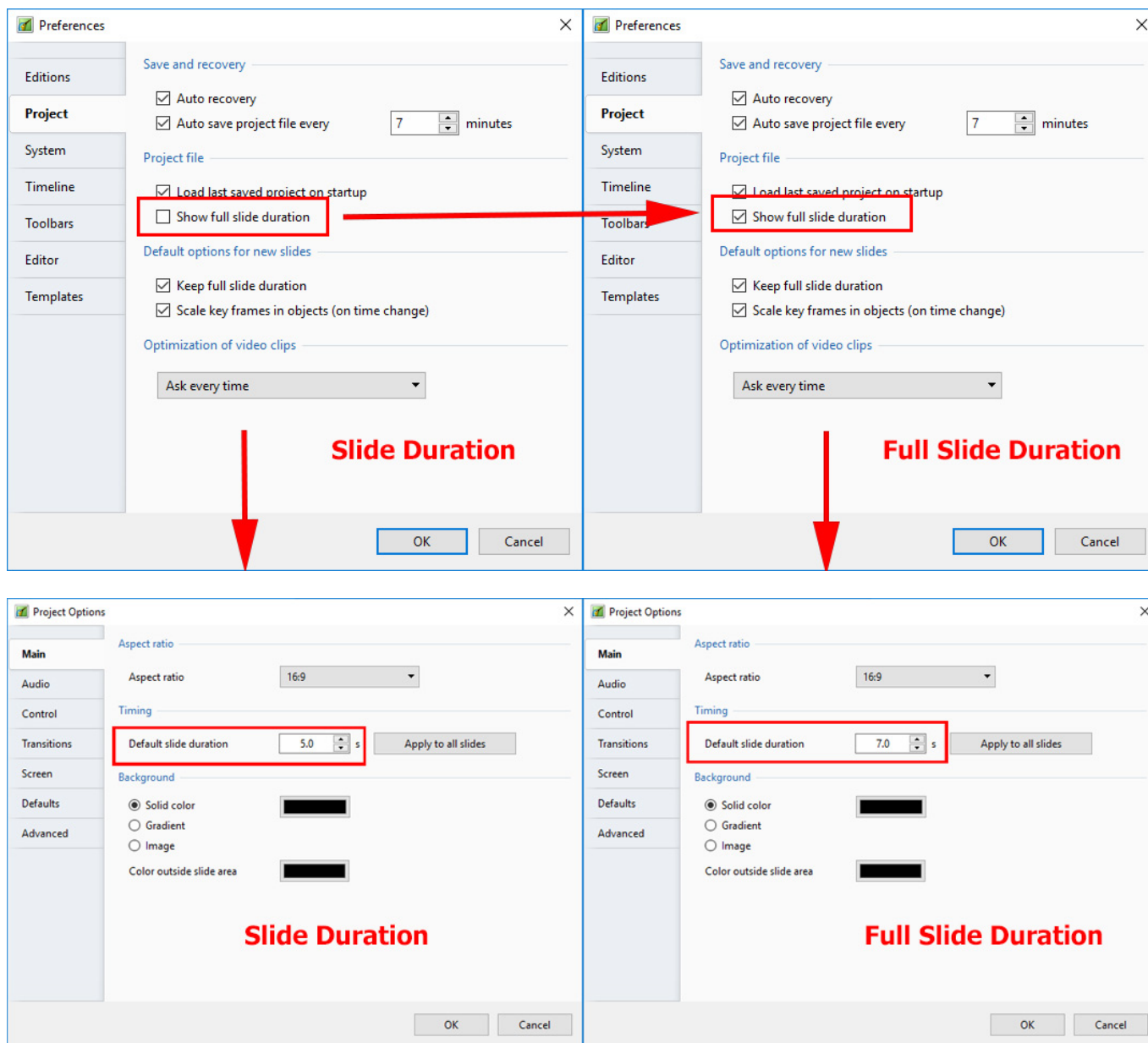


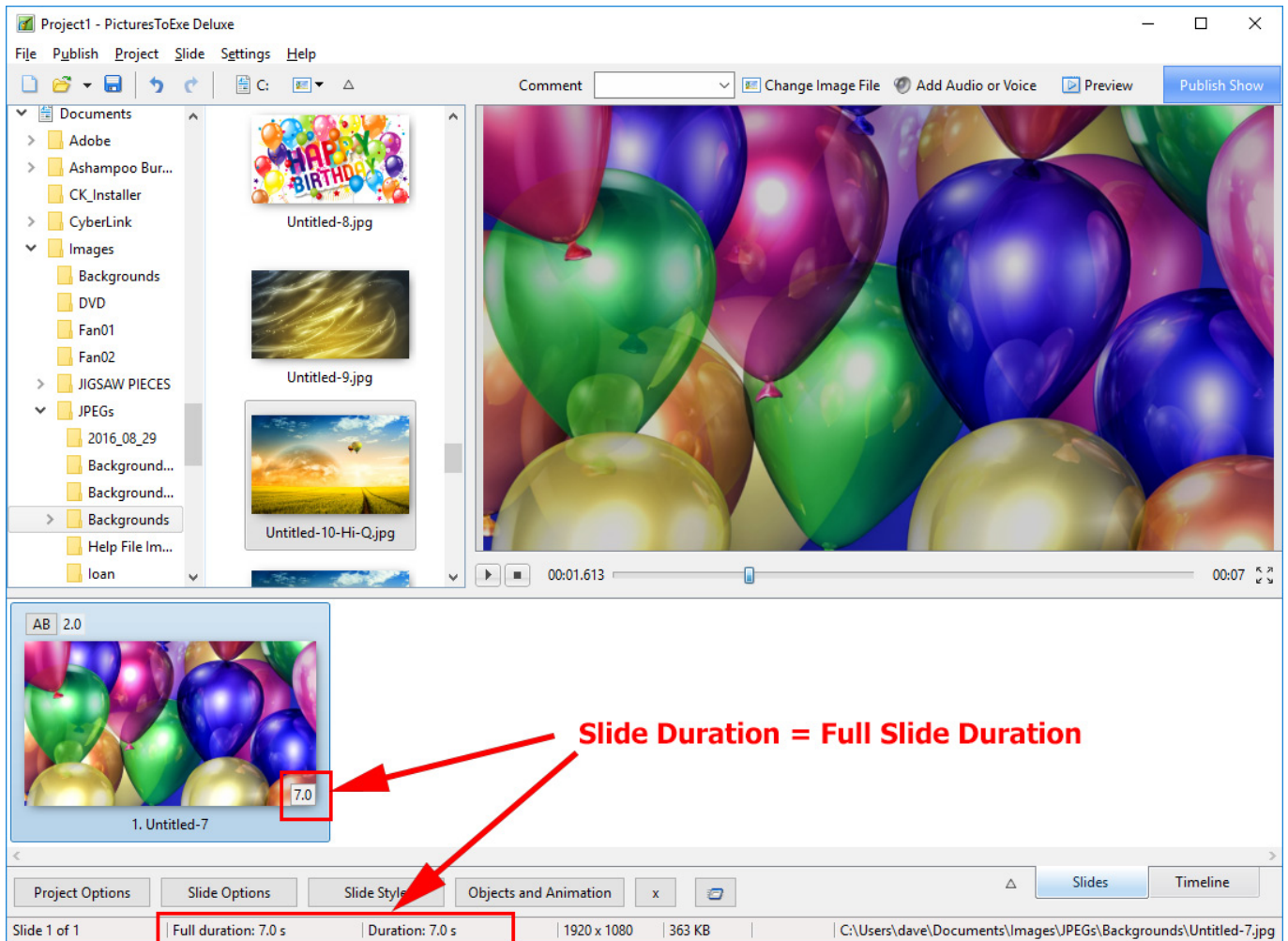
# Slide Duration

## Slide Duration and Full Slide Duration

Depending on the settings of Settings / Preferences and Project Options the duration seen in the Slide List can change.

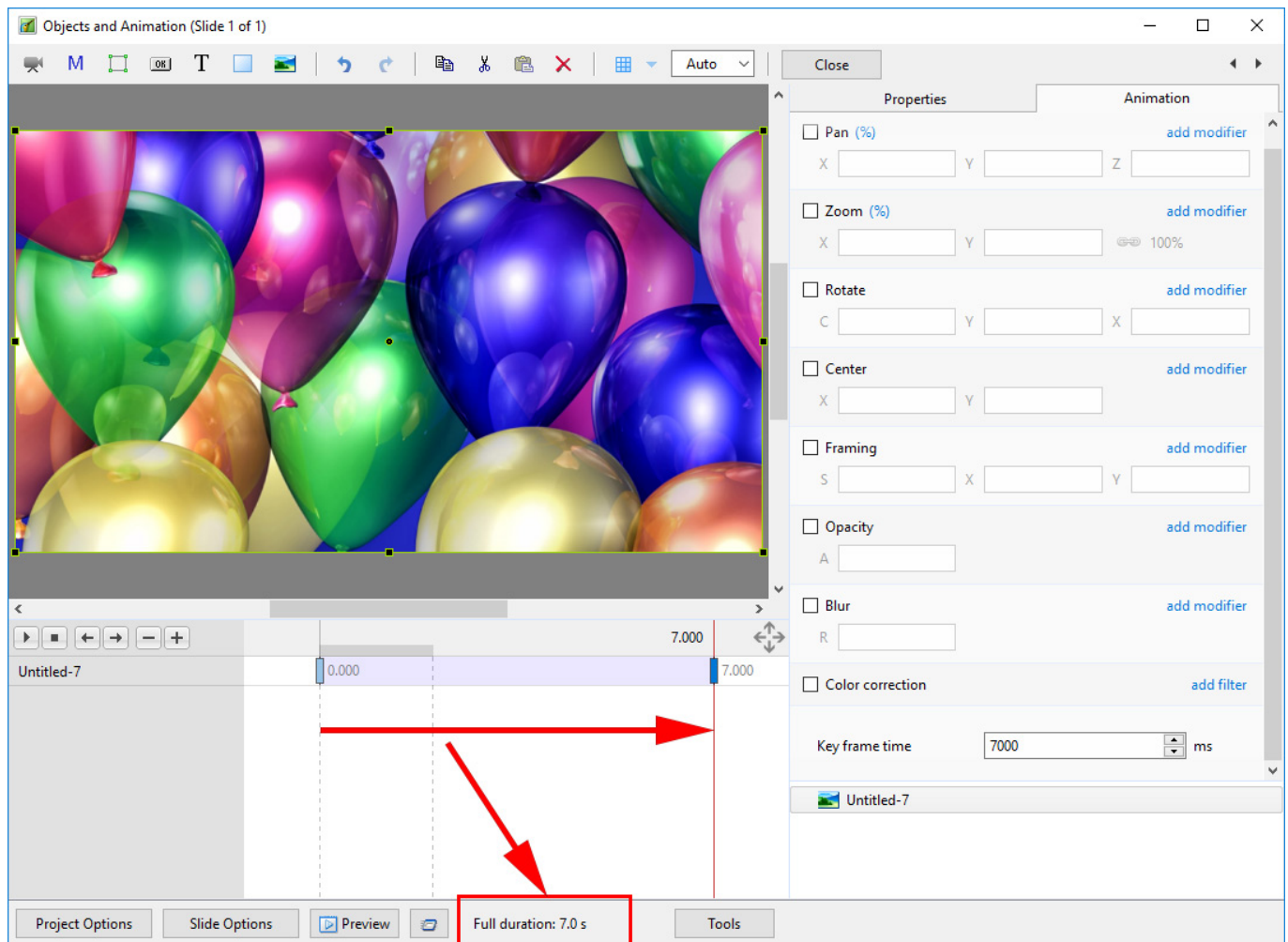


If a single slide is added to the Slide List the Main Screen View looks like this:



The Status bar shows the Full (Slide) Duration and the (Slide) Duration. The Slide Icon displays the Slide Duration. For a single slide the Duration will equal the Full Duration because there is no following slide transition time to take into account - or the following slide transition time is zero.

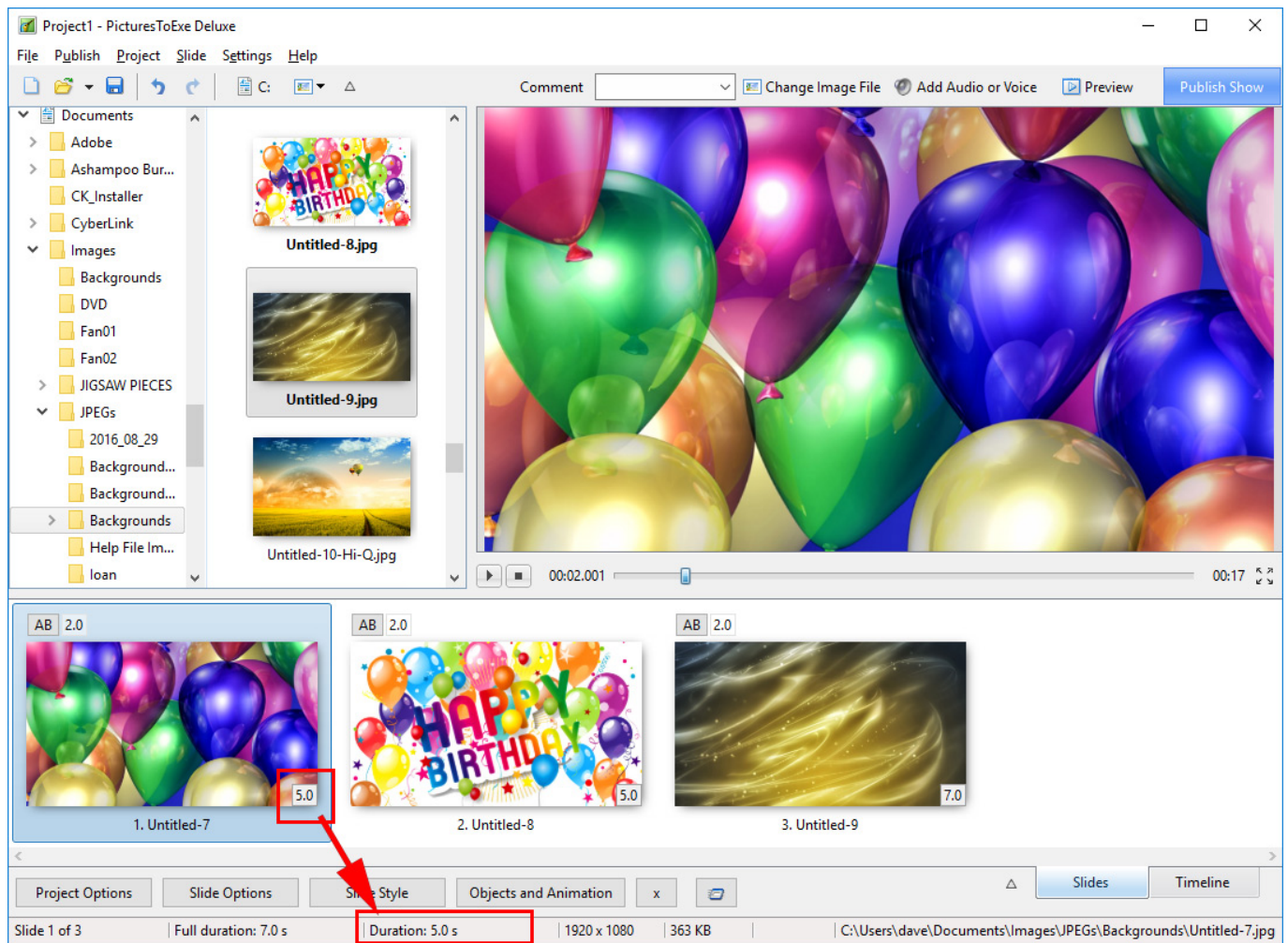
The corresponding Objects and Animation Screen looks like this:



## Adding another slide

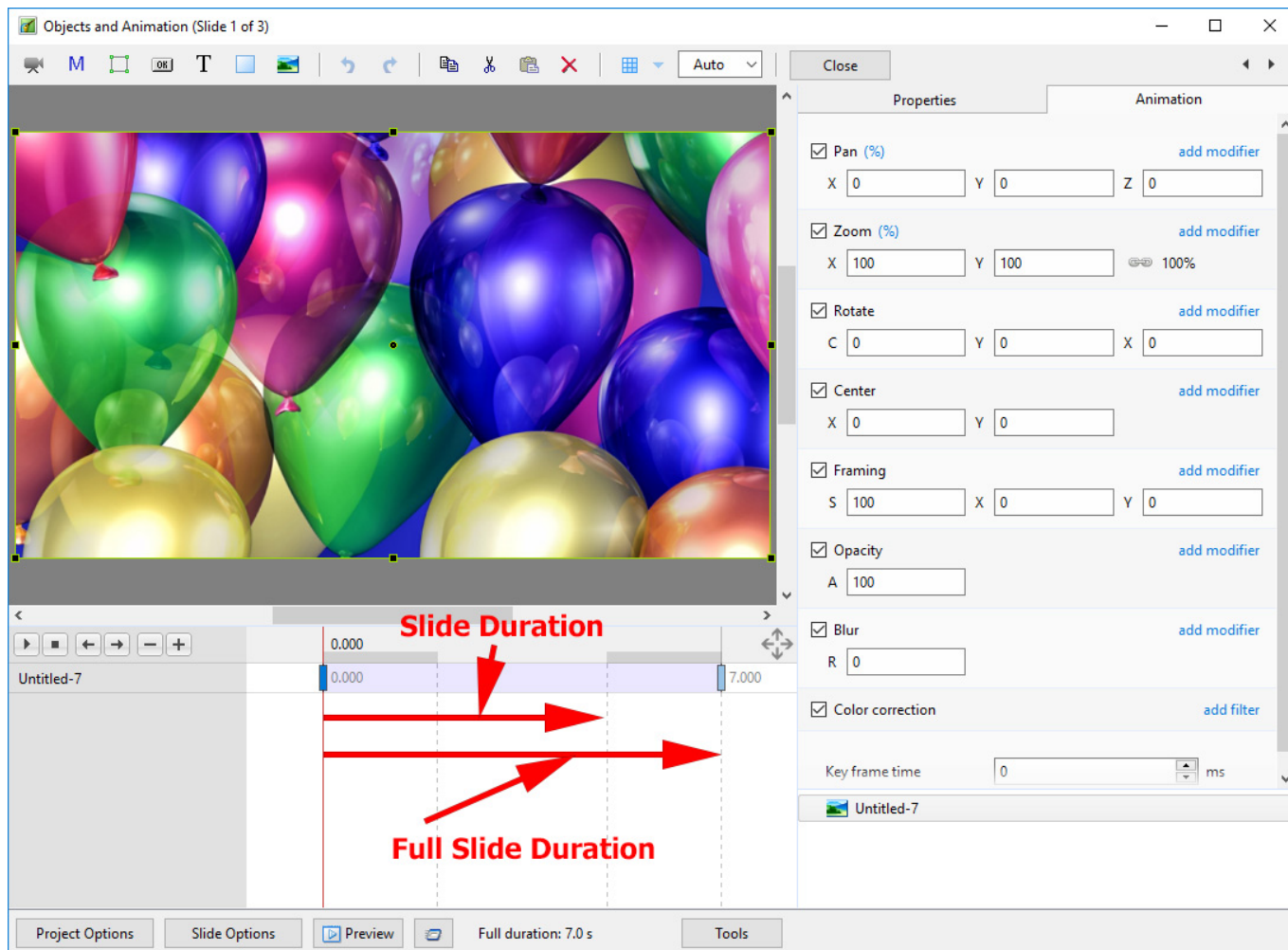
### Show Full Slide Duration Un-Ticked:

Adding a second slide with a 2 second transition time causes a change in the displayed (Slide) Duration. Note that the Full (Slide) Duration remains the same.



Objects and Animation View:

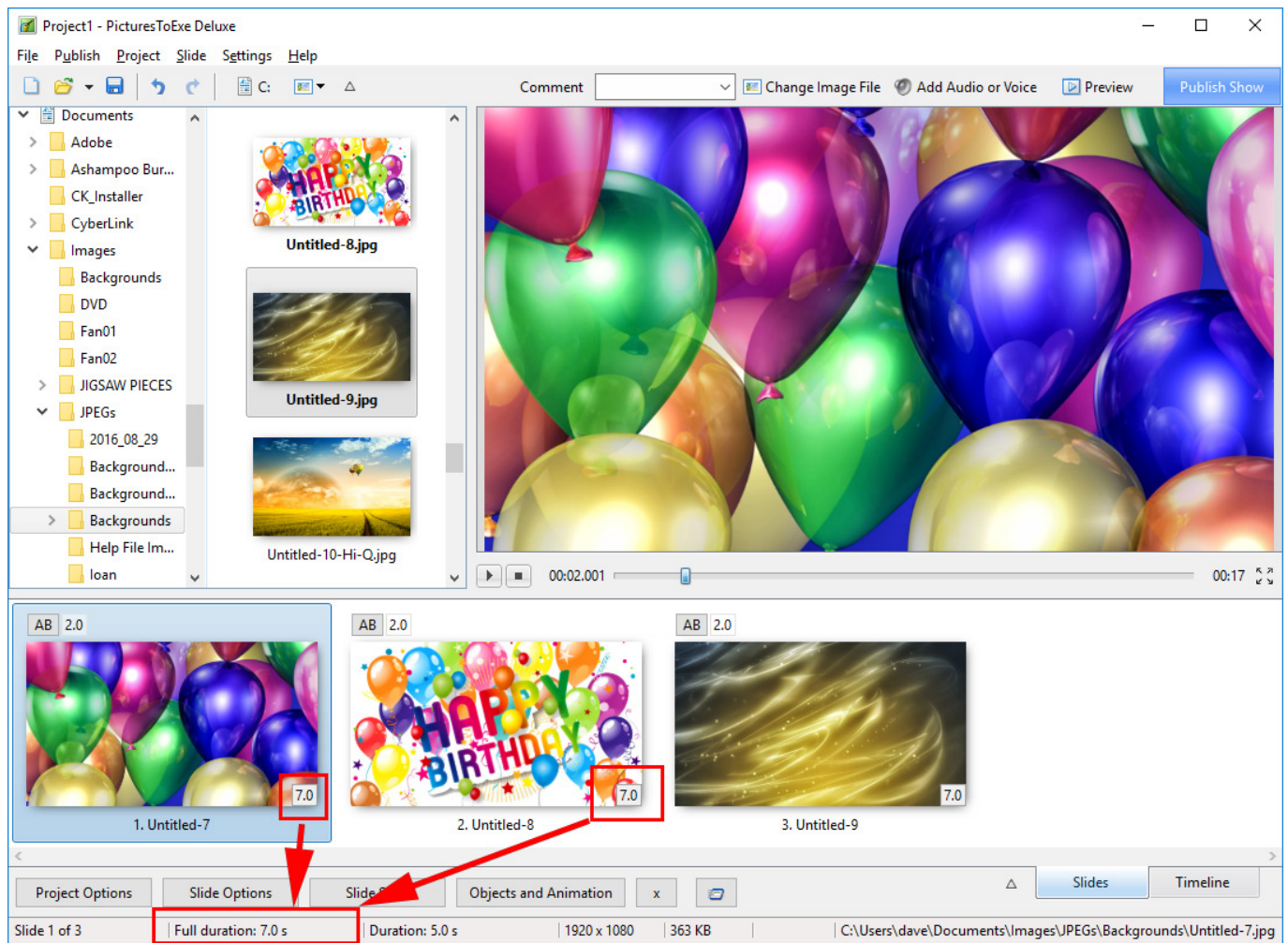




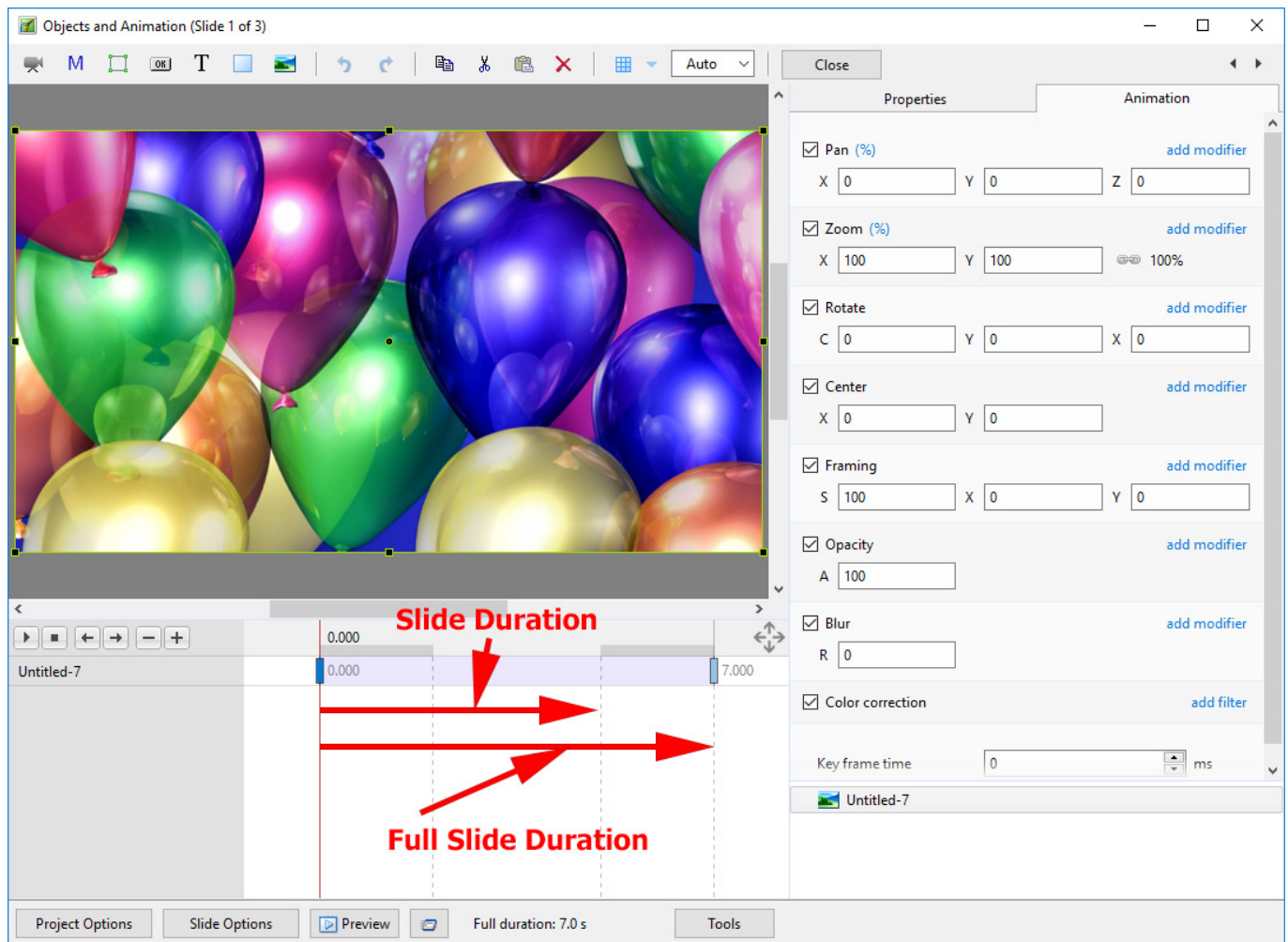
The (Slide) Duration of Slide 1 remains at 5 seconds but because Slide 1 is visible from the beginning of its own transition to the end of the Slide 2 transition (at varying opacities) its Full (Slide) Duration is 7 seconds.

## Show Full Slide Duration Ticked:

Adding a second slide with a 2 second transition time causes a change in the Duration Icon on the Slide. Note that the Full (Slide) Duration and Full (Slide) Duration remain the same.



The Objects and Animation Screen remains the same.

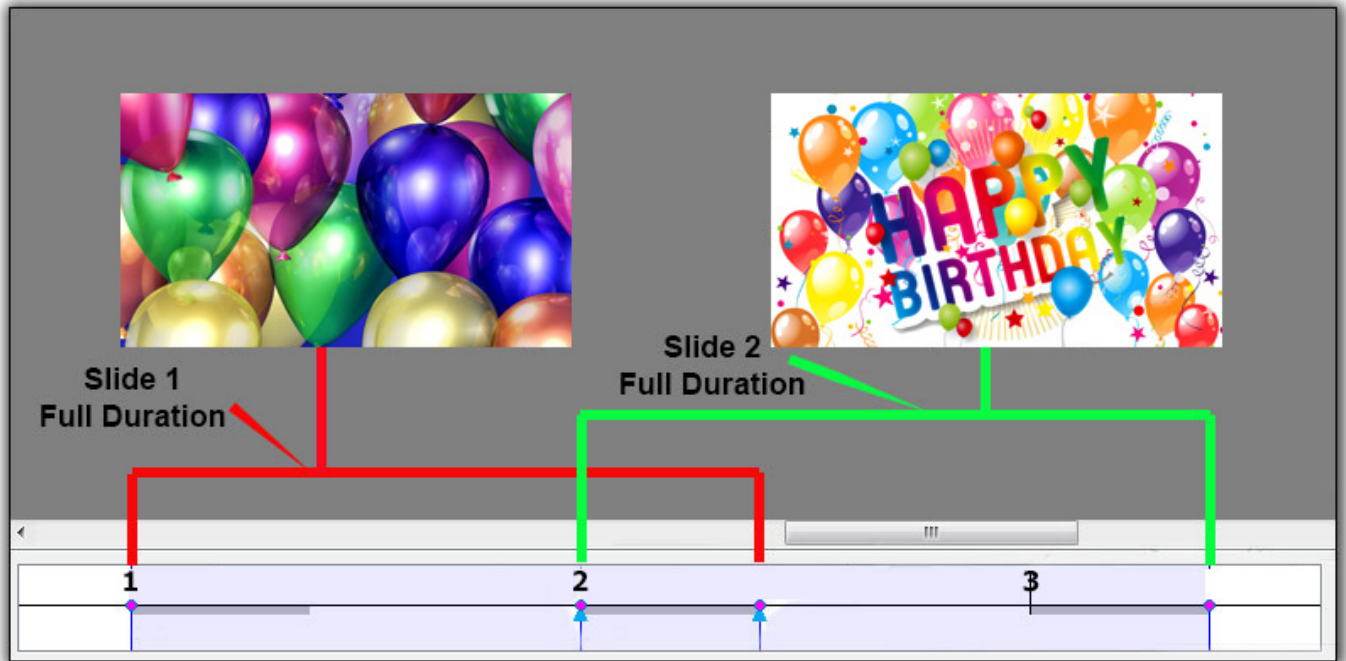


## Example

Key Frames in Slide 1 are placed at Zero and 7 seconds (7000ms)

Key Frames in Slide 2 are placed at 5 seconds (0ms) and 12 seconds (7000ms)

*Below is a **\*\*Simulation\*\*** of two slides in Objects and Animation Screen:*



The Timeline View:



The screenshot displays the PTE AV Studio software interface. The top menu bar includes File, Publish, Project, Slide, Settings, and Help. The main workspace is divided into a left sidebar with a file tree, a central preview area, and a bottom timeline. The file tree shows a project named 'Project1 - PicturesToExe Deluxe' with various folders like 'Images', 'Backgrounds', 'DVD', 'Fan01', 'Fan02', 'JIGSAW PIECES', 'JPEGs', and '2016\_08\_29'. The preview area shows a slide with a background image of colorful balloons. The timeline at the bottom shows three slides: '1. Untitled-7', '2. Untitled-8', and '3. Untitled-9'. Red arrows and text labels indicate the duration settings for Slide 1 and Slide 2. The labels are: 'Slide 1 Duration', 'Slide 1 Full Duration', 'Slide 2 Duration', and 'Slide 2 Full Duration'. The timeline also shows time points from 0:01 to 0:13. The bottom status bar shows 'Slide 1 of 3', 'Full duration: 7.0 s', 'Duration: 5.0 s', '1920 x 1080', '363 KB', and the file path 'C:\Users\dave\Documents\Images\JPEGs\Backgrounds\Untitled-7.jpg'.

From:

<https://docs.ptavstudio.com/> - PTE AV Studio

Permanent link:

[https://docs.ptavstudio.com/en-us/10.0/how\\_to\\_v9/duration?rev=1563278997](https://docs.ptavstudio.com/en-us/10.0/how_to_v9/duration?rev=1563278997)

Last update: 2022/12/19 11:45

