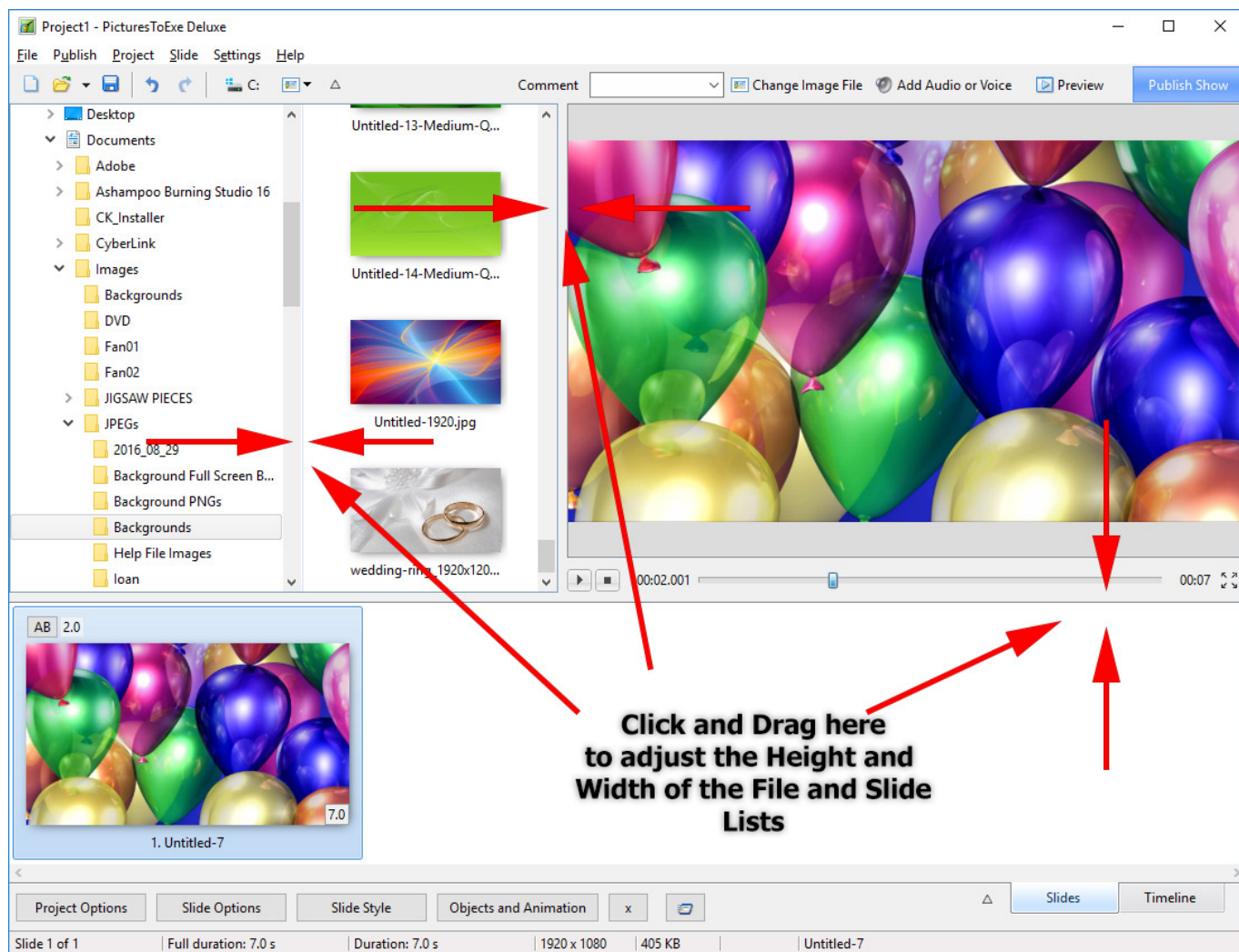


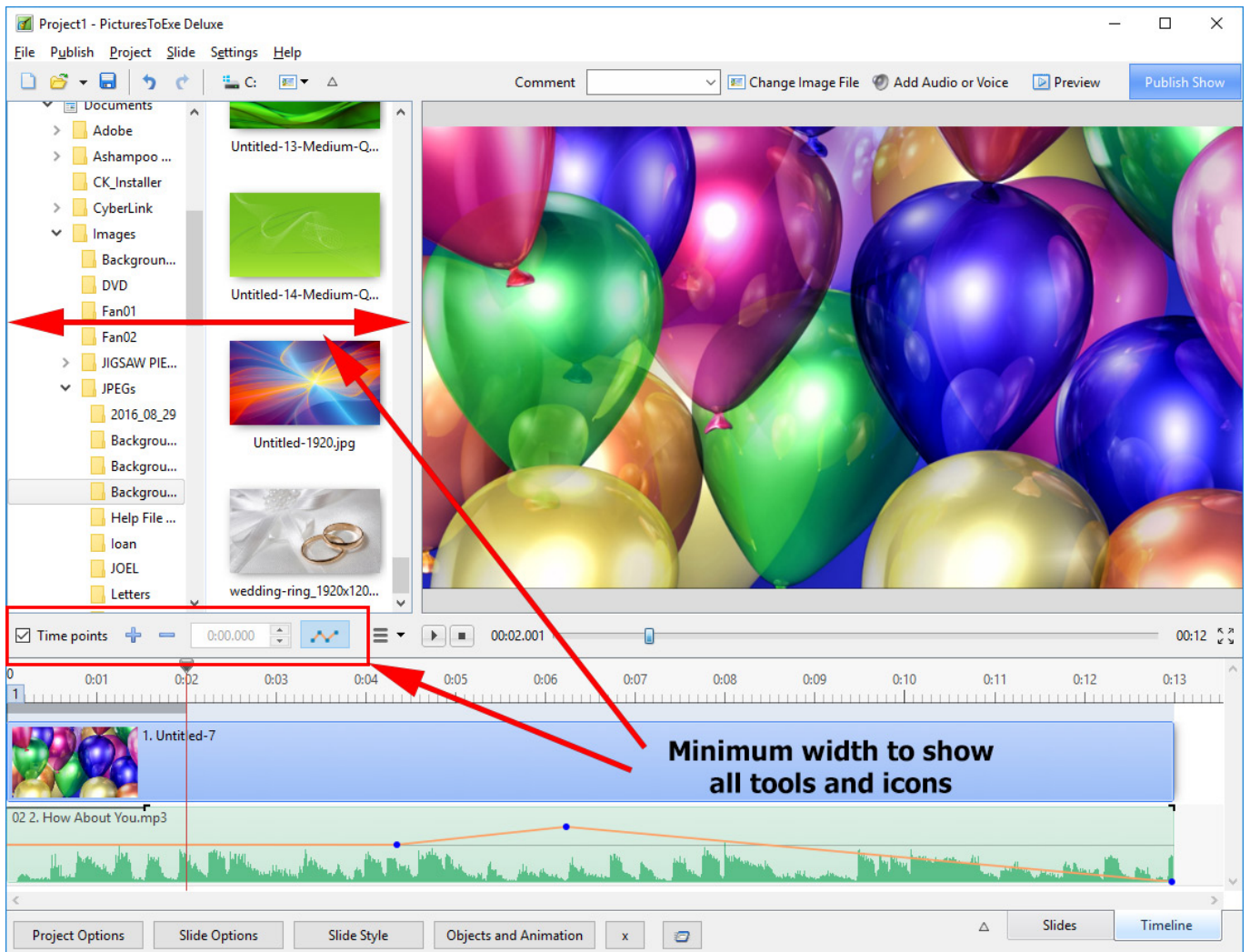
# Configuring The Main Screen

The Main Screen can be configured or laid out to suit specific needs and monitor sizes.

## The Slide View



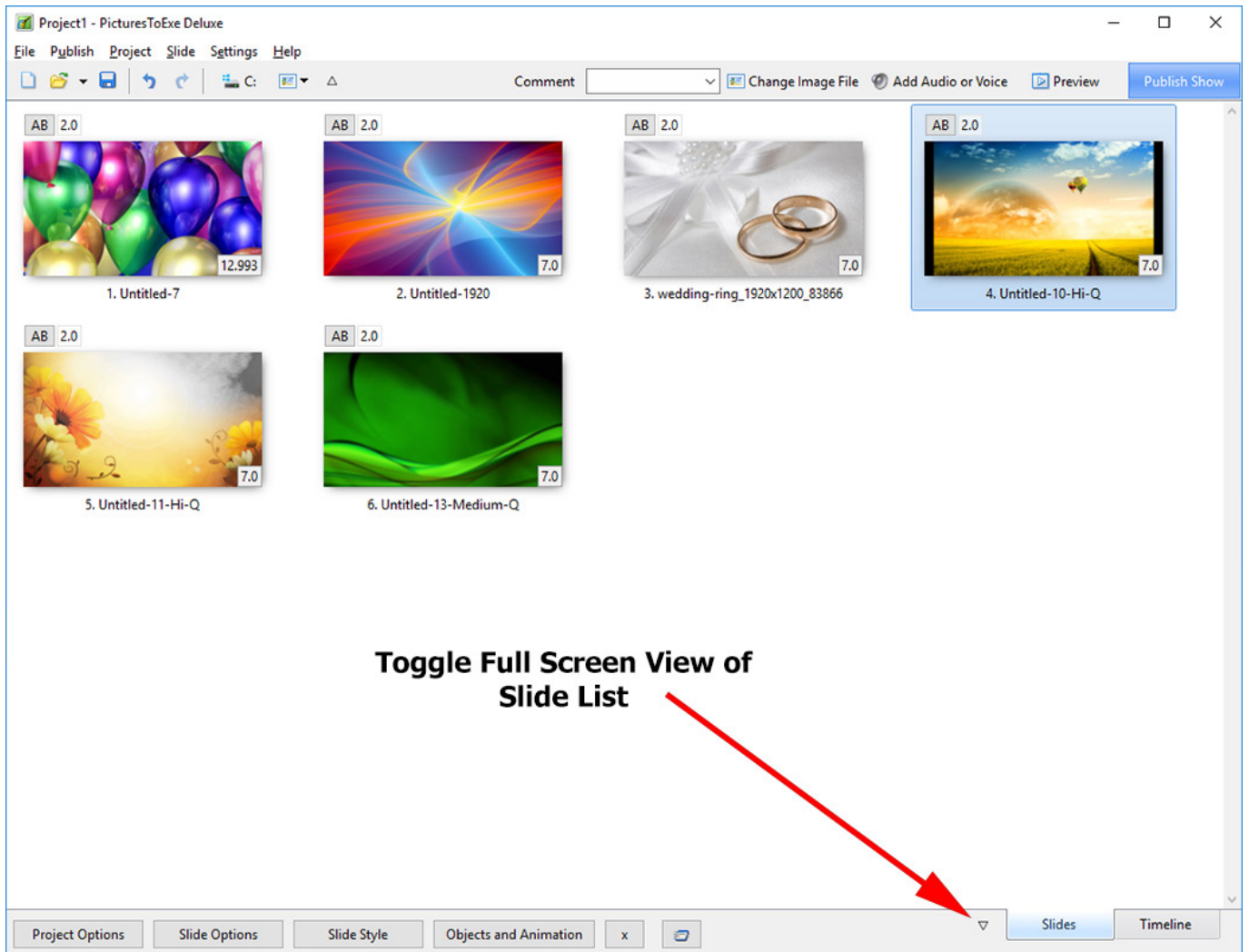
## The Timeline View



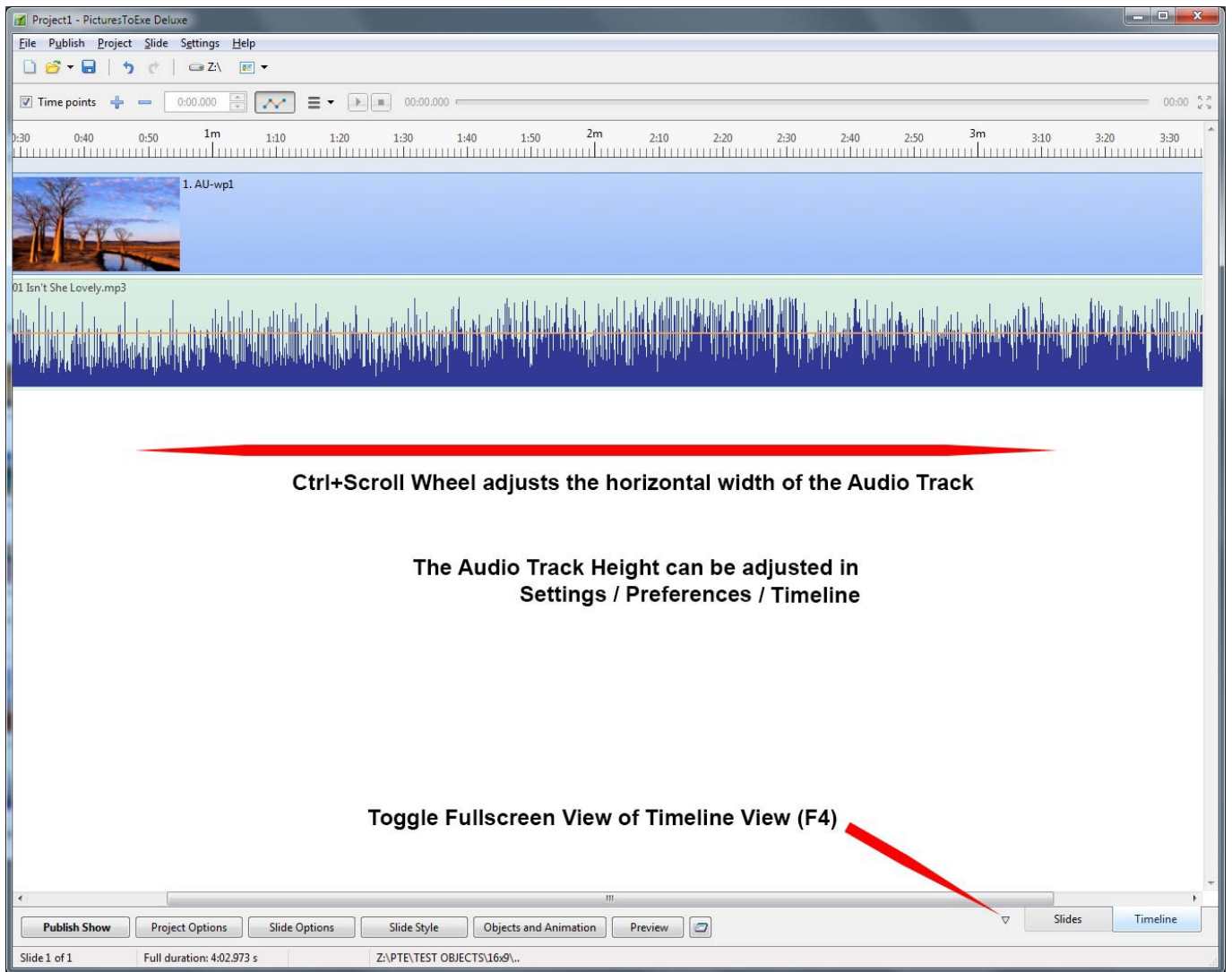
## The Full-Screen View

### Slides View

- Toggle Full Screen View of Slide List



## Timeline View



From: <https://docs.pteastudio.com/> - PTE AV Studio

Permanent link: [https://docs.pteastudio.com/en-us/10.0/main-window\\_1/configuring\\_main\\_screen?rev=1563287795](https://docs.pteastudio.com/en-us/10.0/main-window_1/configuring_main_screen?rev=1563287795)

Last update: 2022/12/19 11:45

