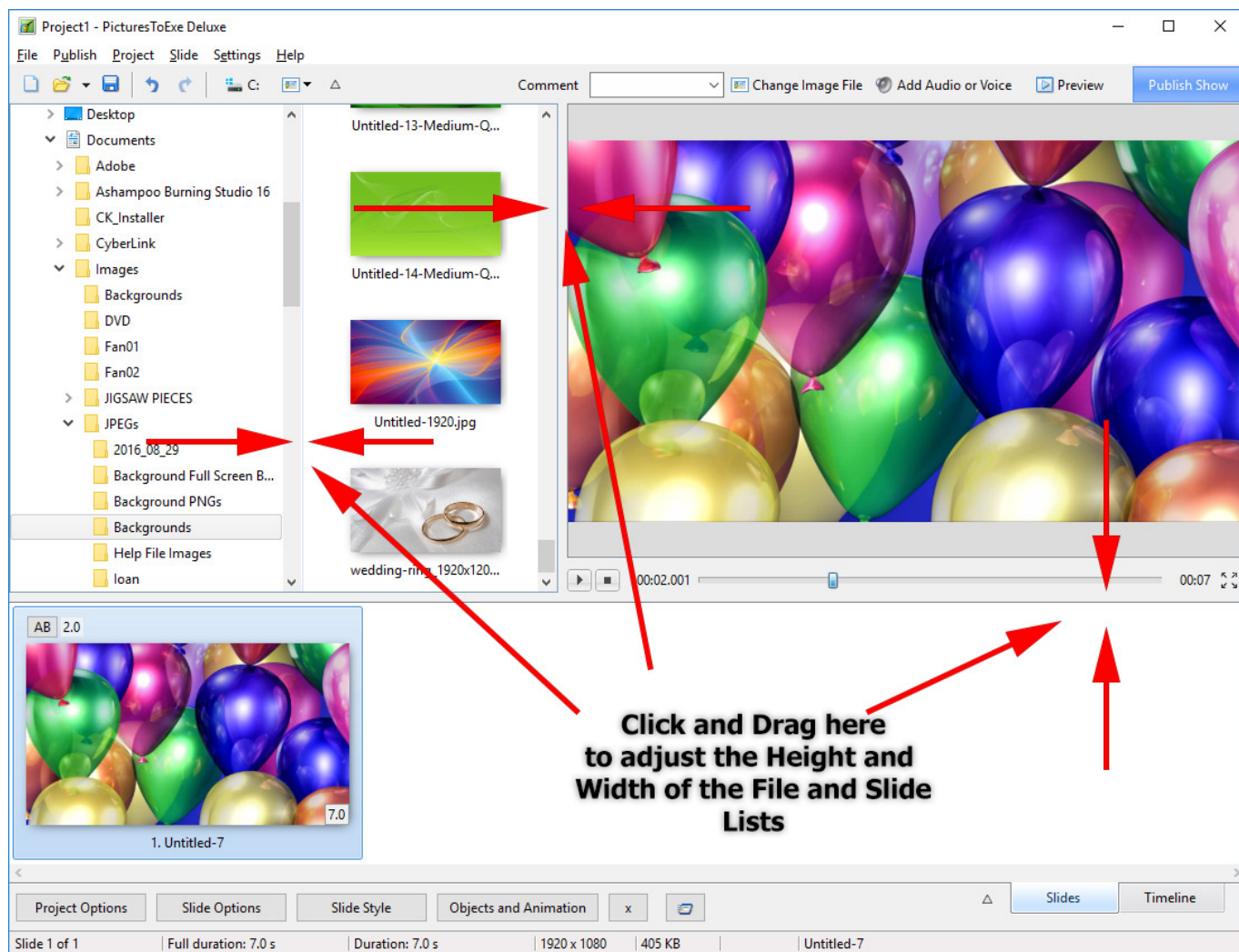


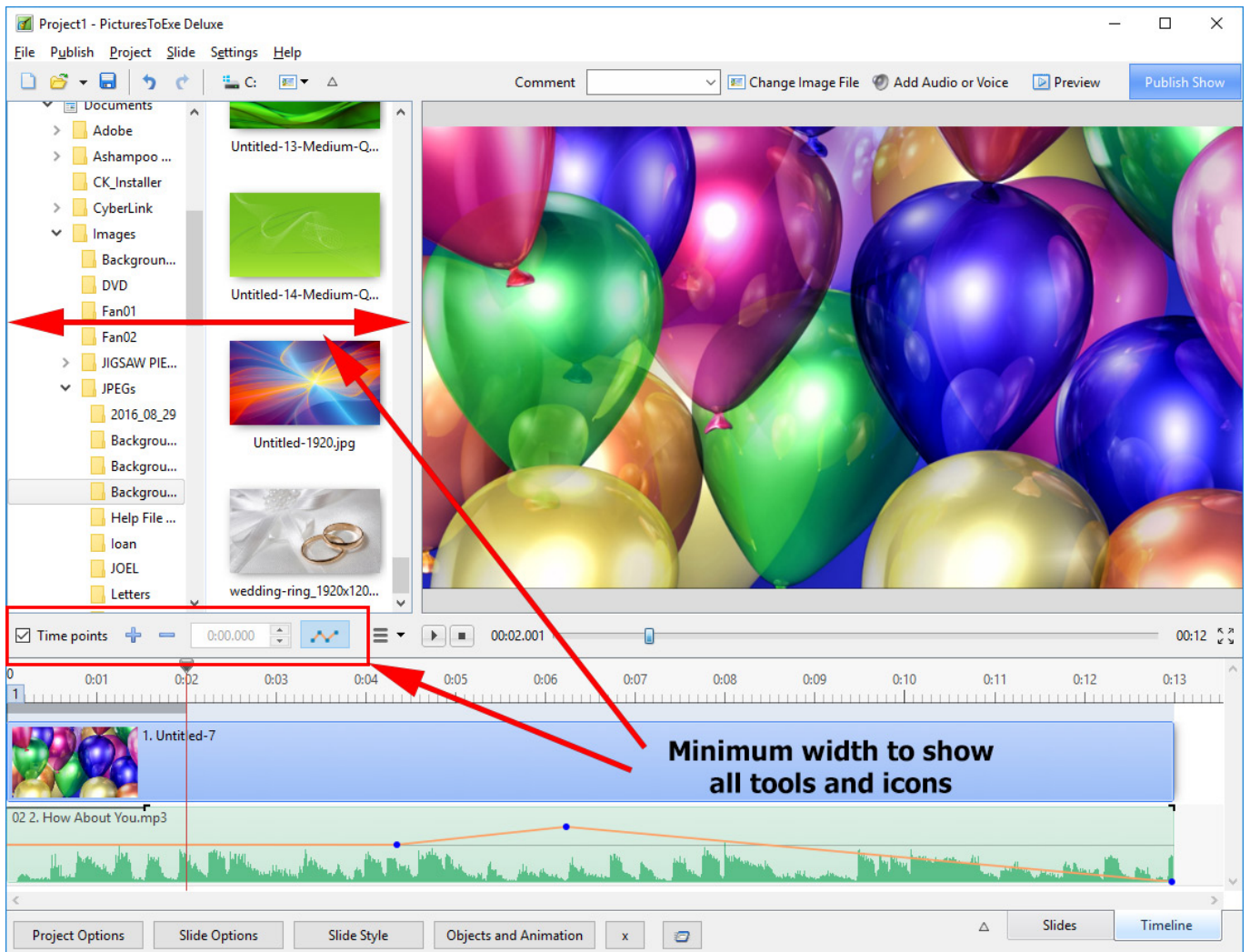
Configuring The Main Screen

The Main Screen can be configured or laid out to suit specific needs and monitor sizes.

The Slide View



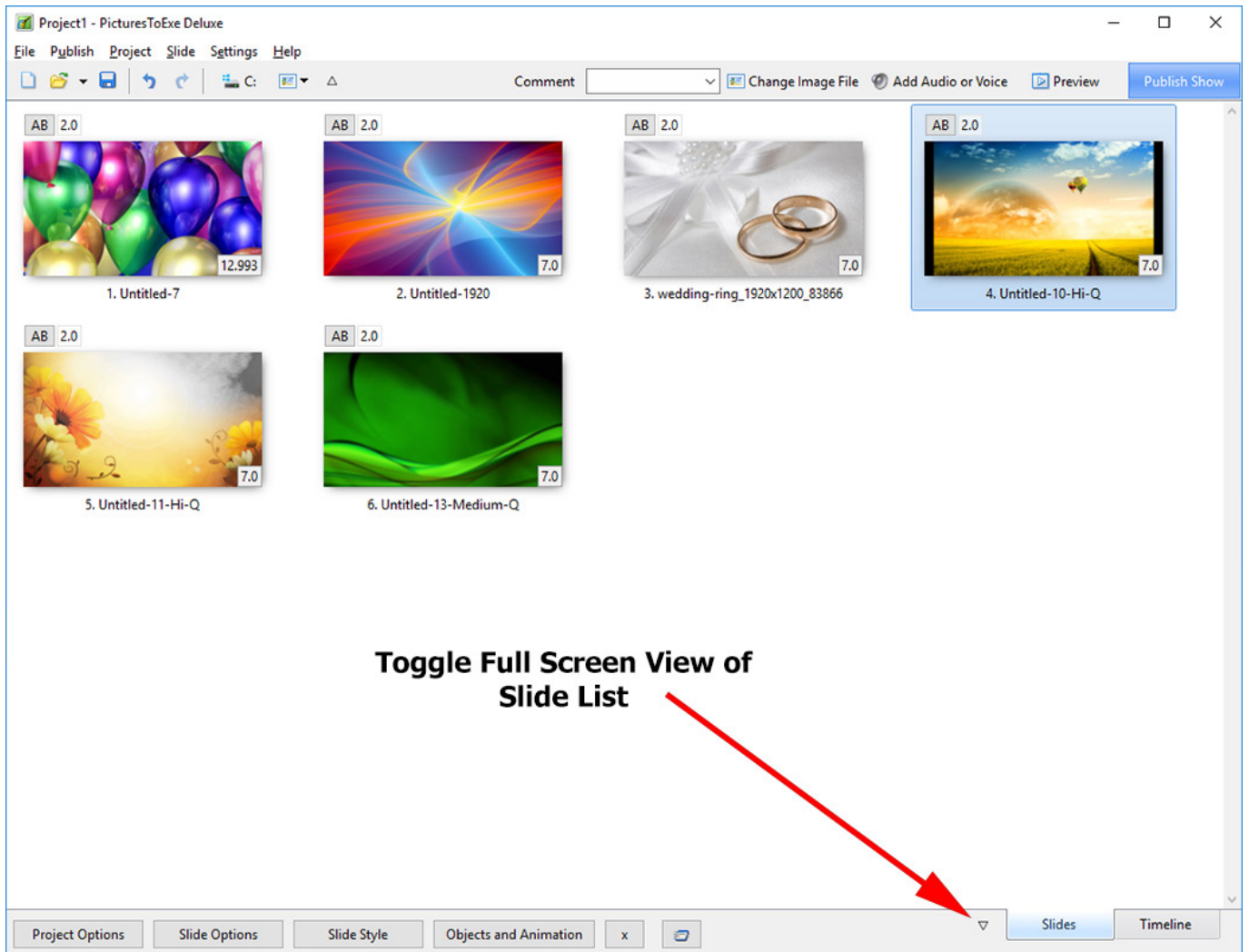
The Timeline View



The Full-Screen View

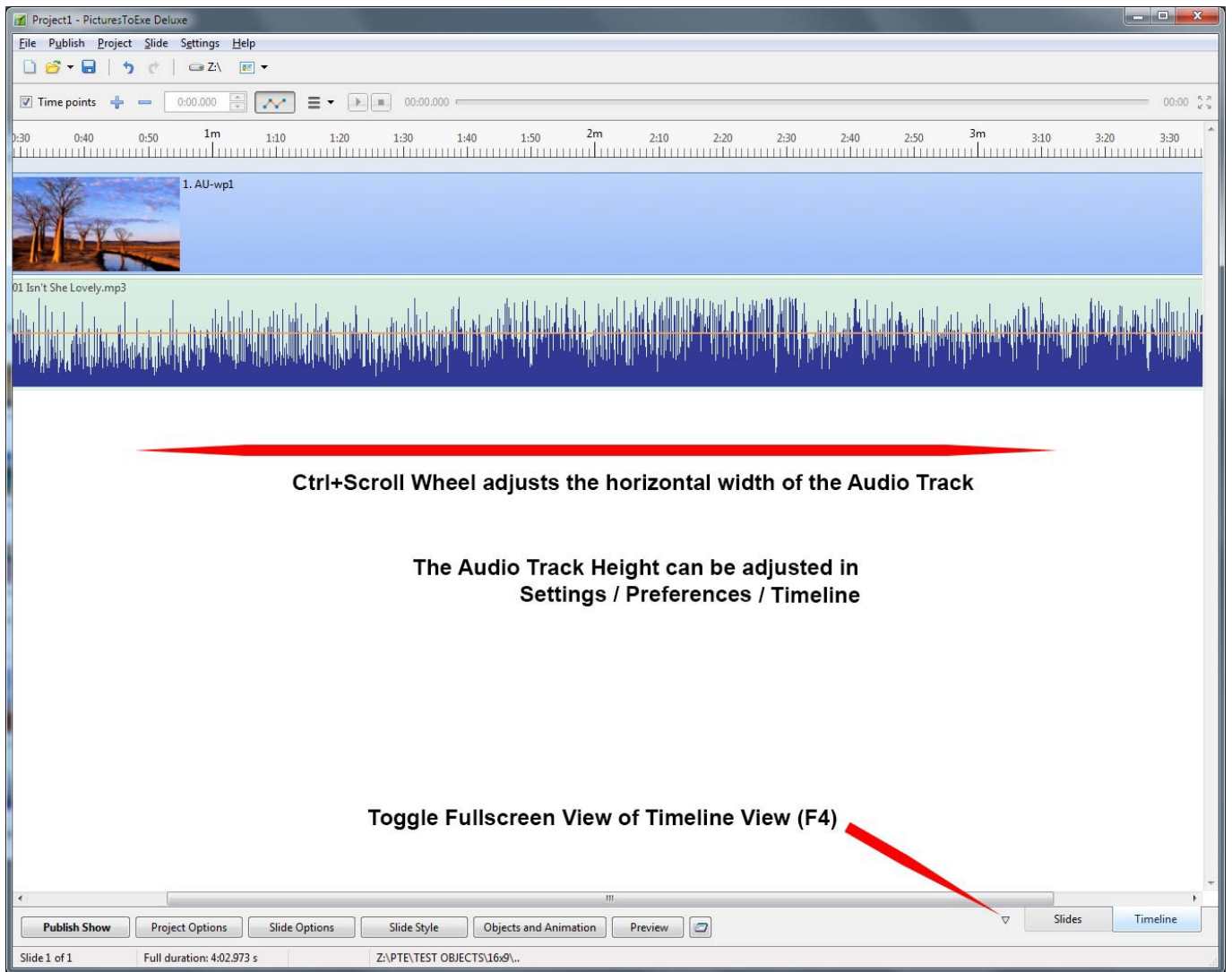
Slides View

- Toggle Full Screen View of Slide List



Toggle Full Screen View of Slide List

Timeline View



From: <https://docs.pteastudio.com/> - PTE AV Studio

Permanent link: https://docs.pteastudio.com/en-us/10.0/main-window_1/configuring_main_screen?rev=1568895357

Last update: 2022/12/19 11:45

