

# File / Slide List View

## Slide List - Standard View

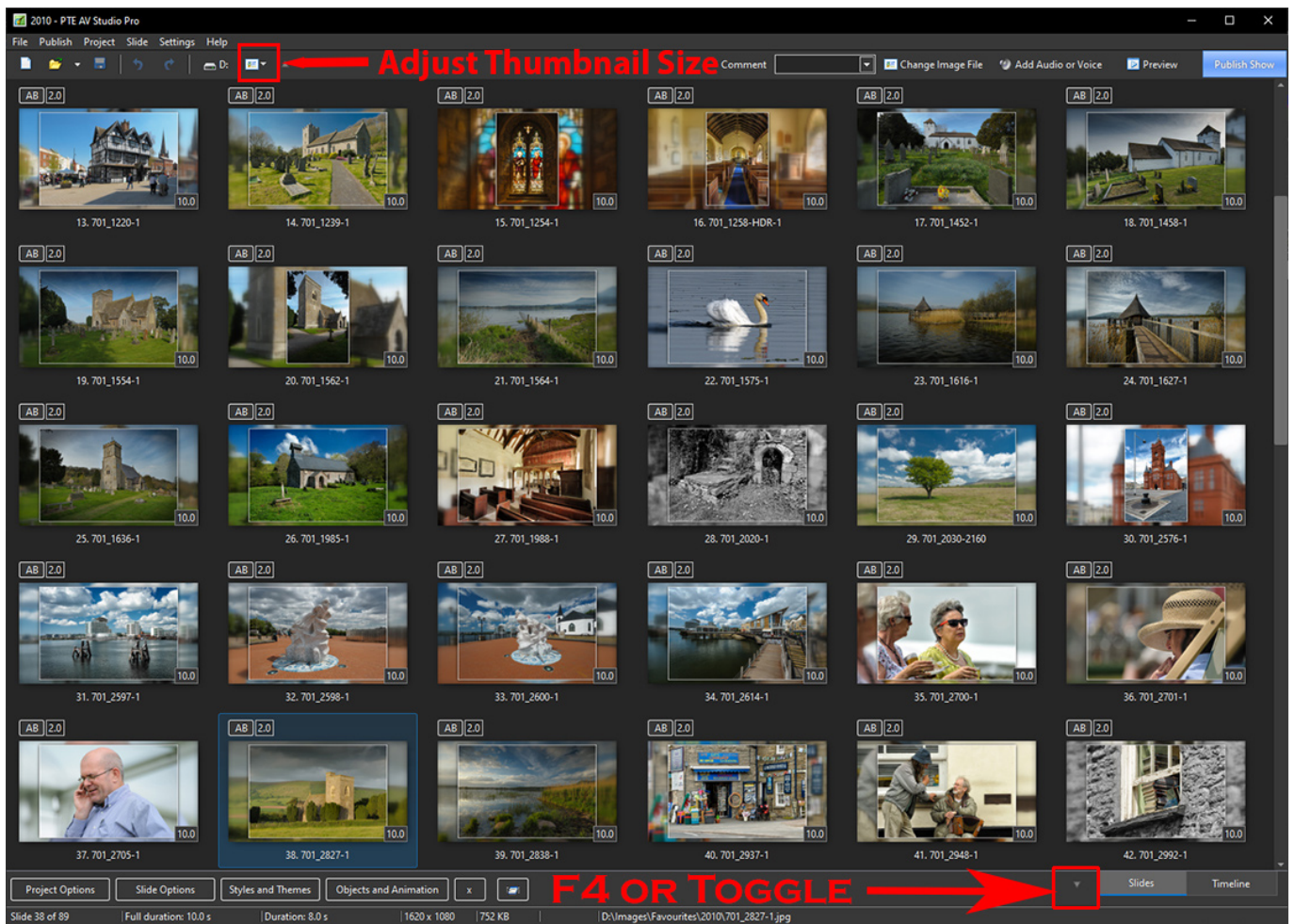


The Right Click Menu is shown with all of its Options.

## Full screen View of Slide List

- Repositioning of Slides (Moving Slides) is best done in this view
- Drag and Drop from original position to new position
- Multiple slides can be moved using either Contiguous or Non-Contiguous selections

Last update: 2022/12/19 11:45 en-us:10.0:main-window\_1:slide\_list\_view [https://docs.pteastudio.com/en-us/10.0/main-window\\_1/slide\\_list\\_view?rev=1618250579](https://docs.pteastudio.com/en-us/10.0/main-window_1/slide_list_view?rev=1618250579)



From: <https://docs.pteastudio.com/> - PTE AV Studio

Permanent link: [https://docs.pteastudio.com/en-us/10.0/main-window\\_1/slide\\_list\\_view?rev=1618250579](https://docs.pteastudio.com/en-us/10.0/main-window_1/slide_list_view?rev=1618250579)

Last update: 2022/12/19 11:45

