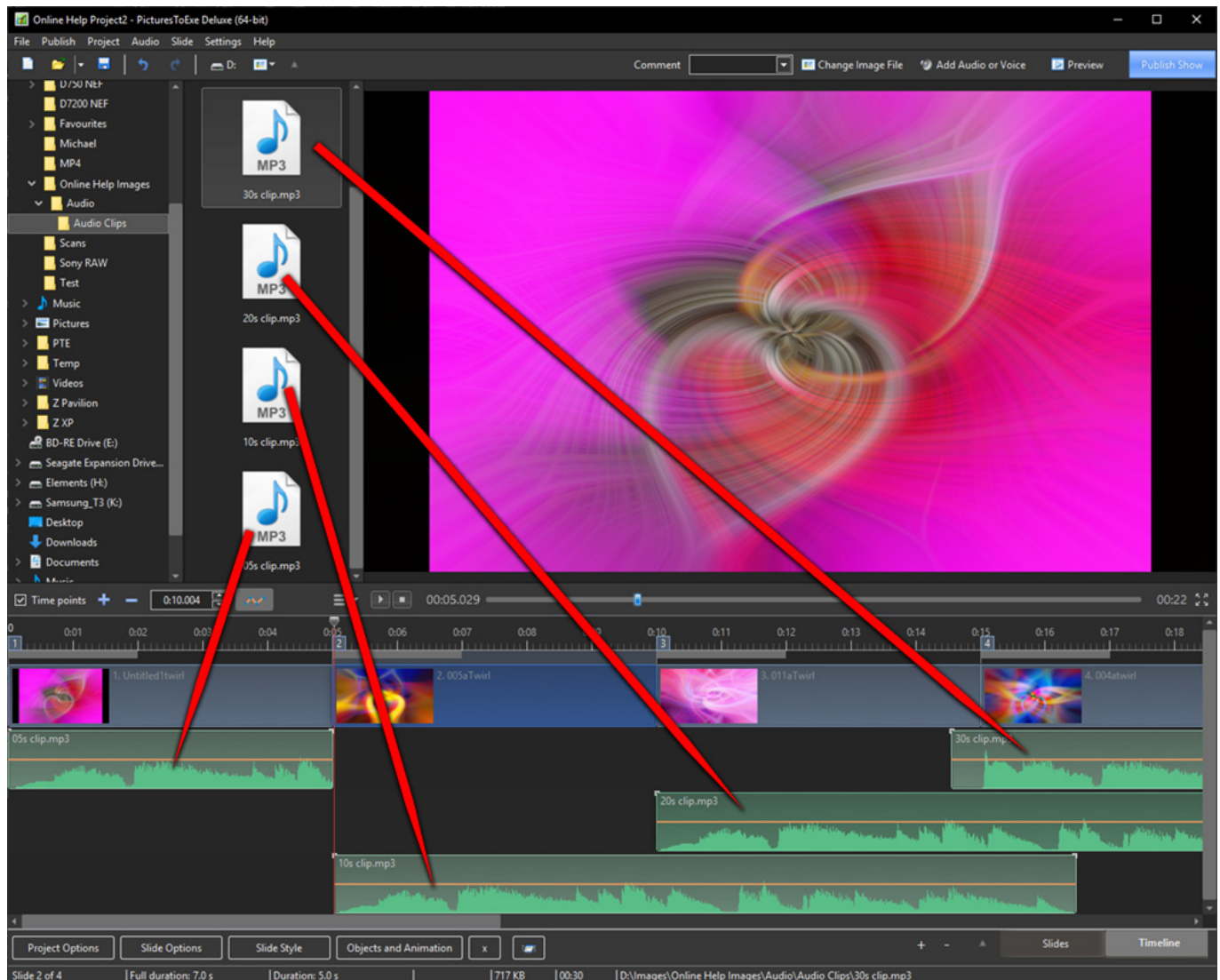


Timeline View

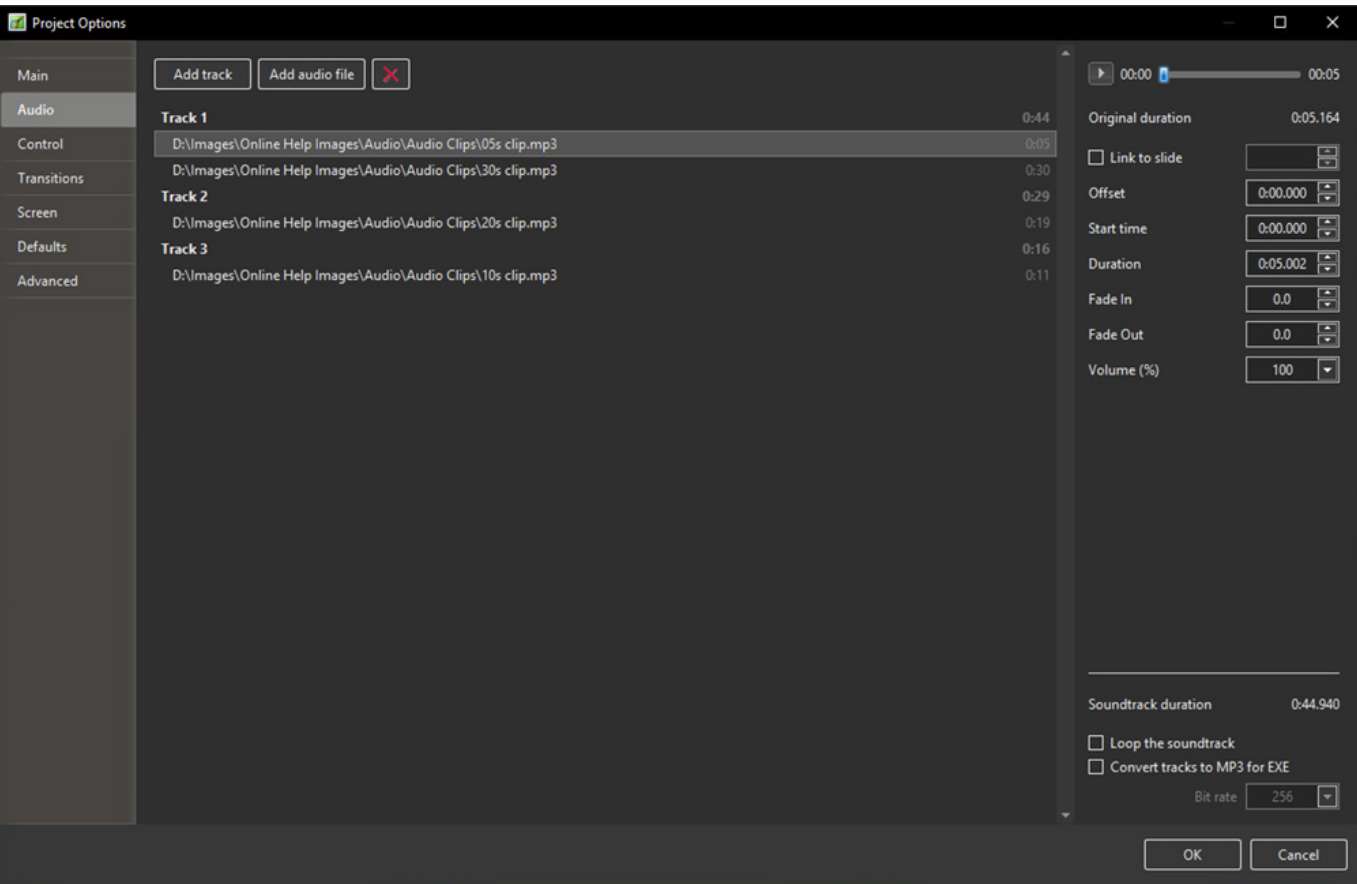
See also the Audio Tab in Project Options.

Audio Files can be dragged and dropped into the Timeline tracks from the Files List.



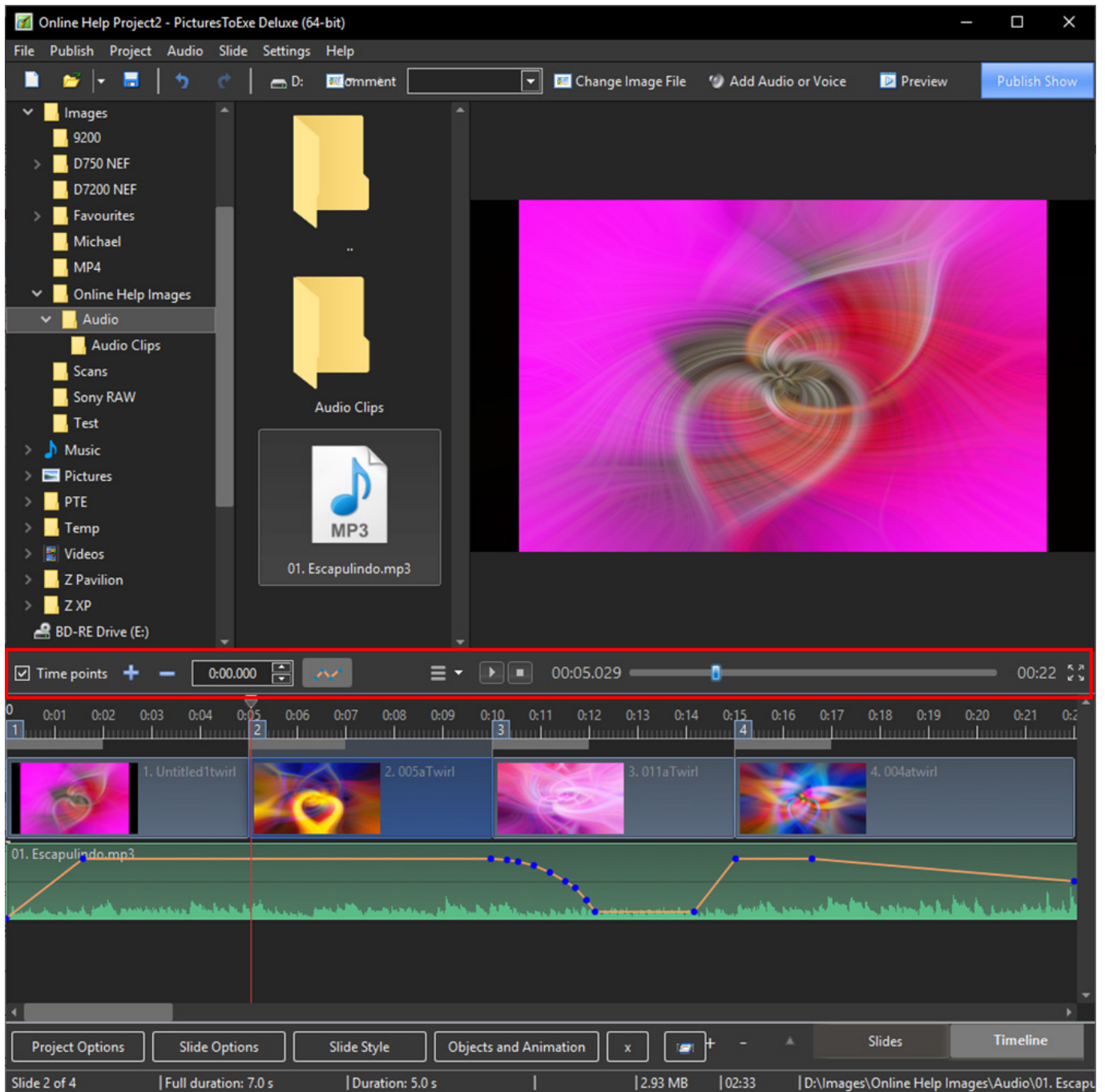
Note that the position (time) of the added audio file is determined by the “drop” action.

The corresponding Project Options / Audio Tab looks like this:



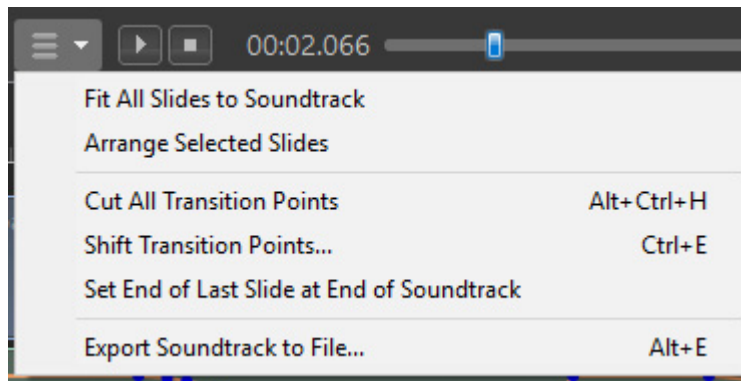
Note that the “Offset” value for the audio file in Track 2 in the above example is from 0 seconds on the Timeline. The “Offset” value for the second audio file in Track 1 would be calculated from the end of the first audio file in Track 1. Fade Ins and Fade Outs made via the Envelope Function are not reflected in the Project Options / Audio Tab.

Other Controls in the Timeline View



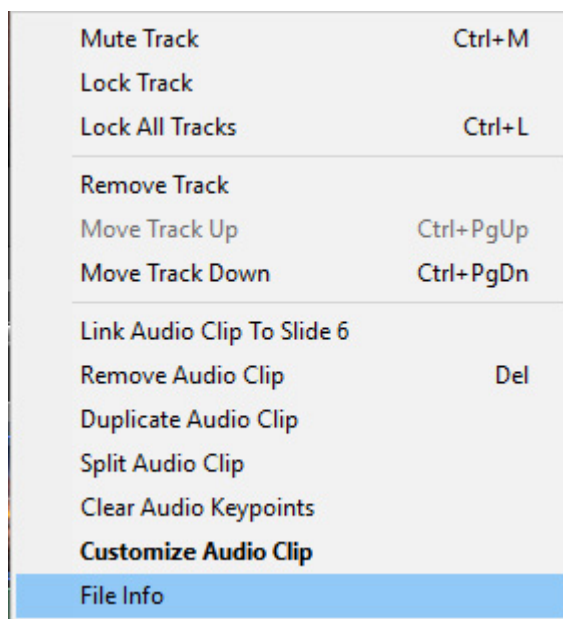
In the image above, from left to right:

- Time Points - Toggles the Slide Numbers (1,2,3 etc) on or off
- + (Plus) - Adds a Time Point at the Cursor Position
- (Minus) - Cuts the last Time Point in the Timeline to a position beyond the end of the Audio Tracks
- The time shown is the start time of the Slide under the cursor - it is possible to fine tune the start time using up and down controls or by typing in the box
- The Envelope Icon - Toggles the Envelope on or off in all tracks



- The “triple horizontal line” (Timeline Options) Icon brings up the menu shown above
- Fit All Slides to Soundtrack - adjusts the time of each equally and fits them to the soundtrack time
- Arrange Selected Slides - select a group of slides and arrange them equally spaced
- Cut All Transition Points - moves all transition points to a point beyond the end of the soundtrack
- Shift Transition Points - select one or more slides and move their transition point(s) by a fixed amount
- Set End of Last Slide at End of Soundtrack - useful for synchronizing the end of the last slide with the soundtrack
- Export Soundtrack to File - Choose WAV, or MP3 and Bit Rate

The Timeline Right Click Menu - Audio Clips



- **Link Audio Clip to Slide x** -
- **Remove Audio Clip**
- **Duplicate Audio Clip**- This command will duplicate the selected Audio Clip in a new Audio

Track

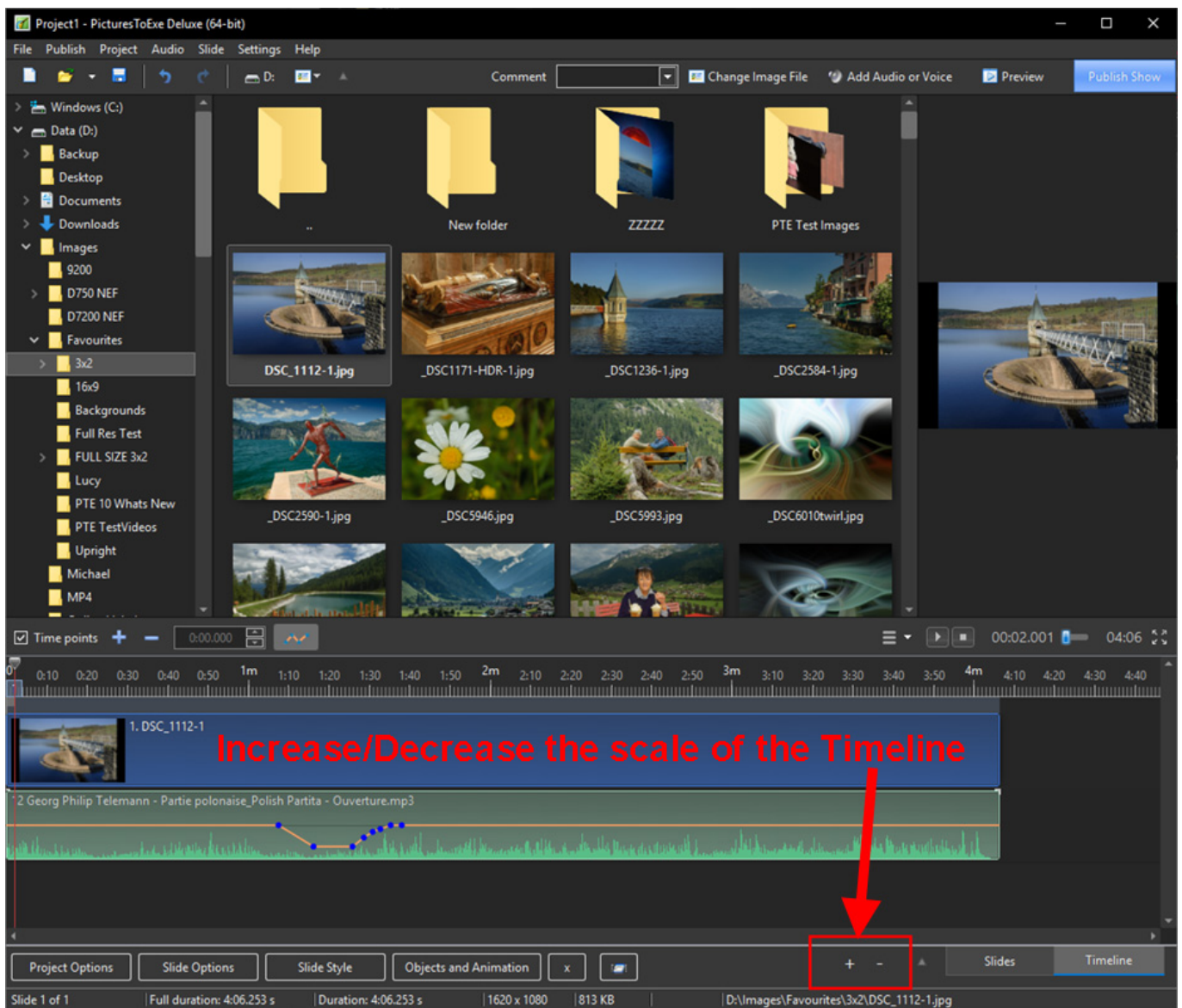
- **Split Audio Clip** - This command will split the selected Audio Clip at the position of the cursor
- **Clear Audio Keypoints**
- **Customise Audio Clip**
- **File Info**

The Timeline Right Click Menu - Video Clips

Copy Slide	Ctrl+C
Paste Slide	Ctrl+V
Insert Blank Slide	Alt+S
New Transition	
Remove Slide	Del
Cut Transition	
Clear Slide List	
Random Order	Alt+R
Slide Options	Ctrl+U
Styles and Themes	
Objects and Animation	Ctrl+B
Rotate Clockwise	Ctrl+F
Rotate Counterclockwise	Alt+F
Audio Comment	>
Change Video File	Alt+C
Separate Audio from Video	
Trim Beginning of Video	
Edit File	Ctrl+W
File Info	Ctrl+I

- **Separate Audio from Video** - The Audio of a Video Clip is extracted from the Video Clip and is inserted into a New Track and can be edited as a normal Audio Track.
 - The Audio which remains in the Video Clip is automatically Muted

Scaling the Timeline View



The Mini Player

- The PLAY button starts the MINI-PLAYER from the Cursor Position
- The STOP Button stops the Mini-Player and returns the Cursor to the previous position
- The time shown at the end of the progress bar shows the End of the Last Slide
- The Four Arrow Icon starts the Full Screen Preview from the Cursor Position

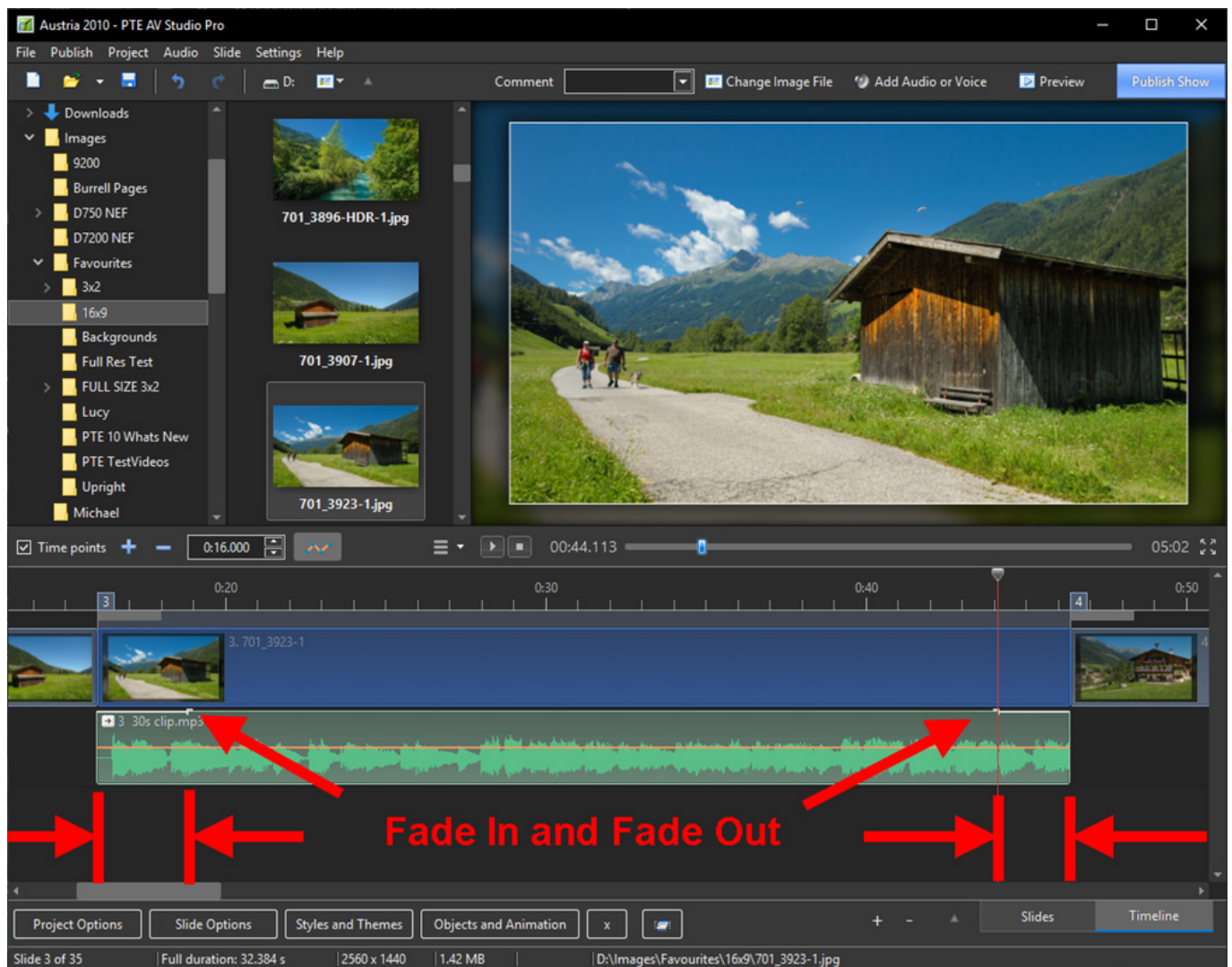
Fade In / Fade Out Brackets

The screenshot displays the PTE AV Studio Pro interface in Timeline View. The top menu bar includes File, Publish, Project, Audio, Slide, Settings, and Help. Below the menu is a toolbar with icons for file operations and a 'Publish Show' button. The left sidebar shows a file explorer with folders like Downloads, Images, and Favourites. The main preview window shows a video of a wooden barn in a mountainous landscape. The timeline at the bottom shows a video clip labeled '3. 701_3923-1' with a red arrow pointing to the 'Fade In and Fade Out Brackets'.

Fade In and Fade Out Brackets

Project Options | Slide Options | Styles and Themes | Objects and Animation | x | Slides | Timeline

Slide 3 of 35 | Full duration: 32.384 s | 2560 x 1440 | 1.42 MB | D:\Images\Favourites\16x9\701_3923-1.jpg



Images

- Dragging images into the Timeline View is NOT advised. This is best done in the Slide List View. The DROP point overrides the Project Options / Slide Duration default and can lead to confusion.

From:
<https://docs.pteastudio.com/> - PTE AV Studio

Permanent link:
https://docs.pteastudio.com/en-us/10.0/main-window_1/timeline_view?rev=1572632629

Last update: 2022/12/19 11:45

