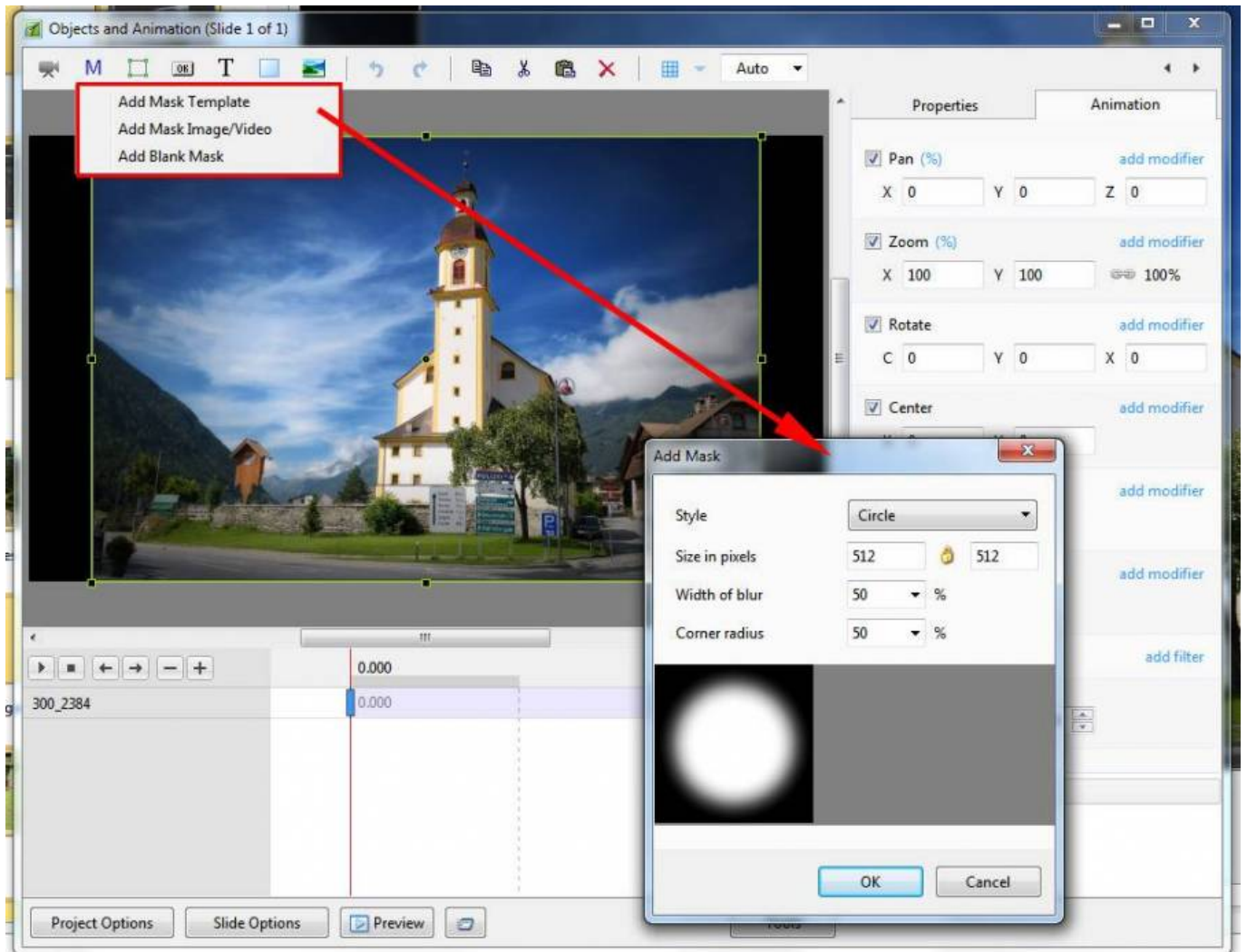
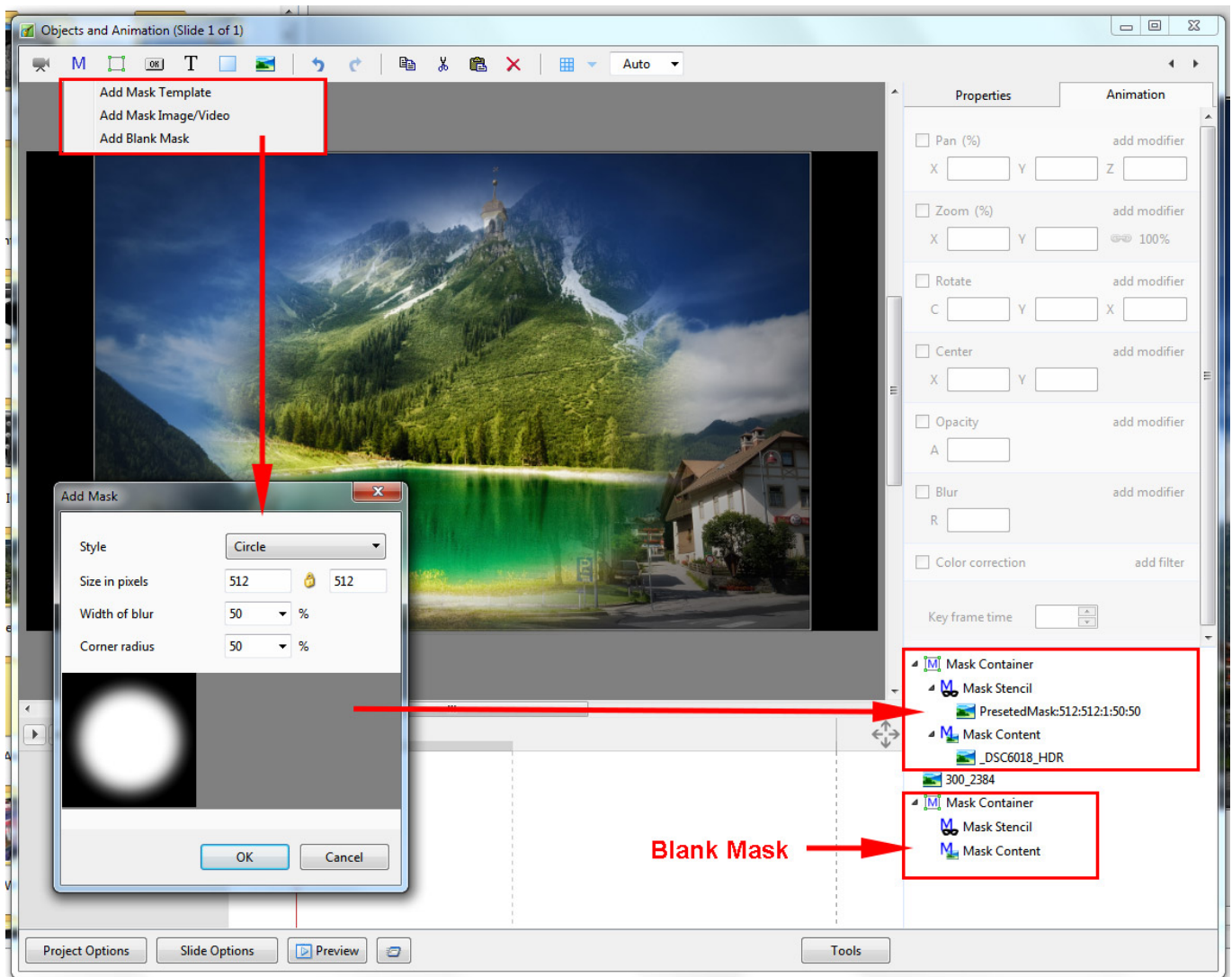


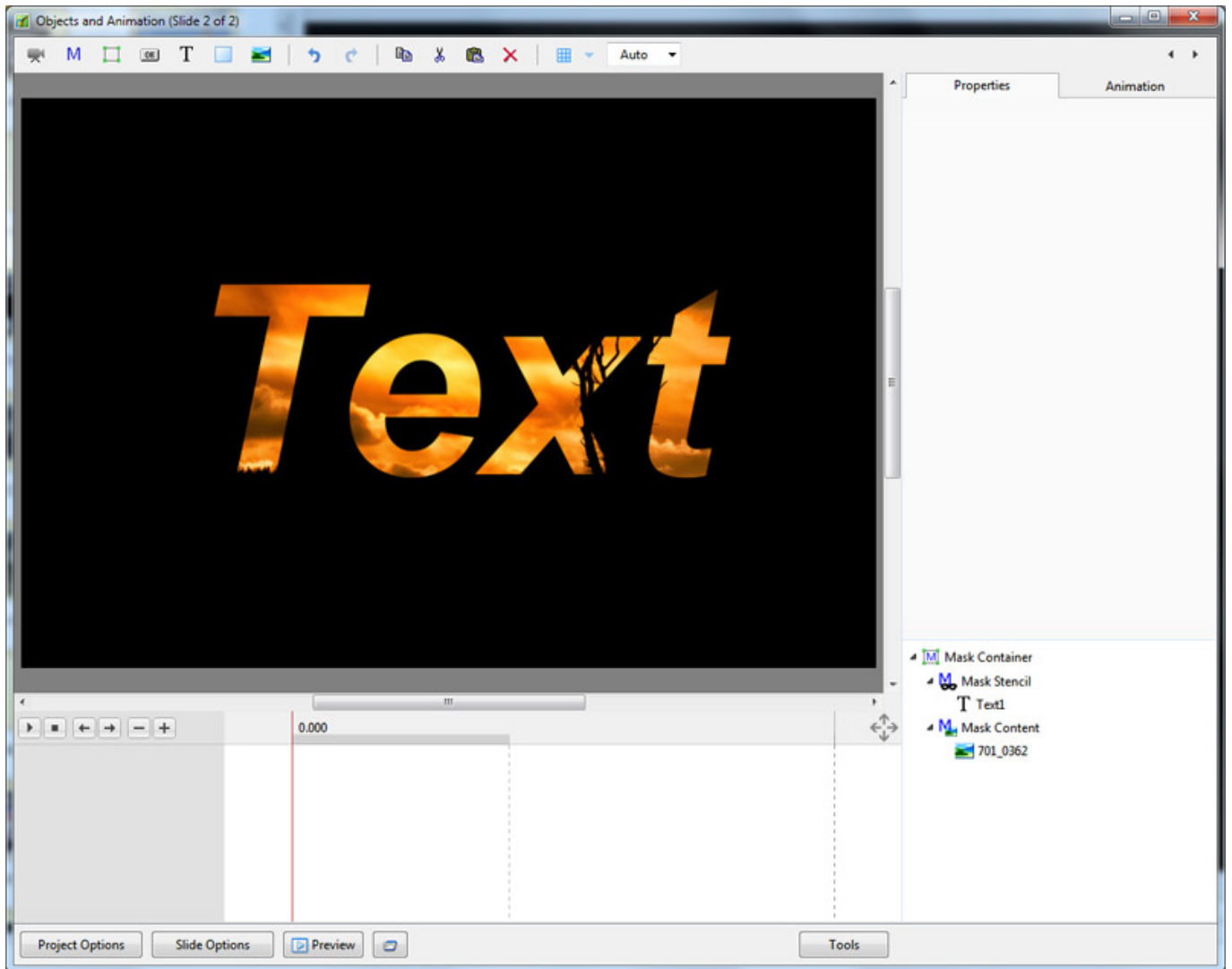
# The Mask Menu

See also the topic on Masks here : [Add a Mask Object](#)





You can use any object as a masking layers in Mask Stencil container. For example, use a Text object as a mask.



From:  
<https://docs.pteastudio.com/> - PTE AV Studio

Permanent link:  
[https://docs.pteastudio.com/en-us/10.0/objectsandanimation\\_1/masks?rev=1563279045](https://docs.pteastudio.com/en-us/10.0/objectsandanimation_1/masks?rev=1563279045)

Last update: 2022/12/19 11:45

