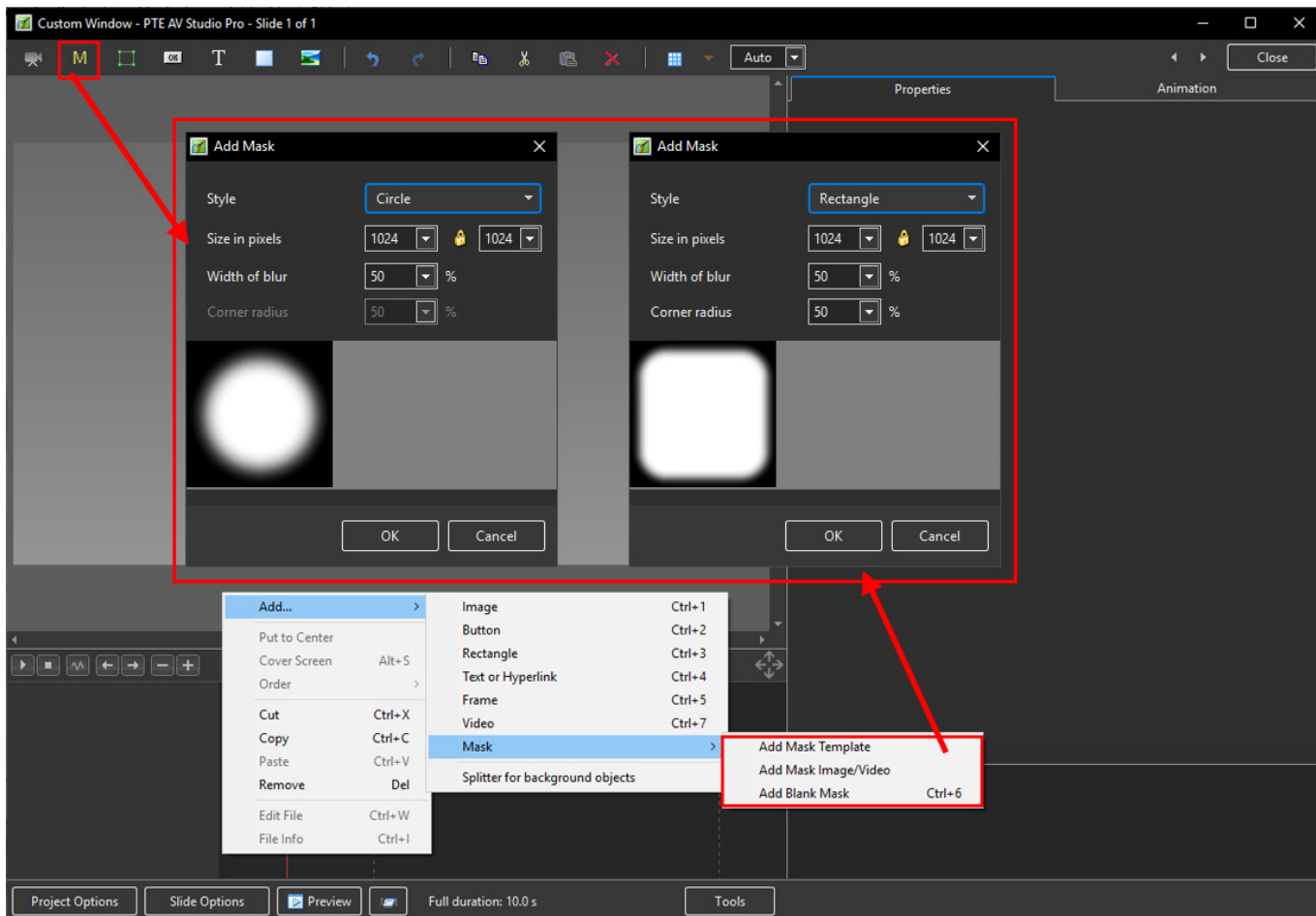
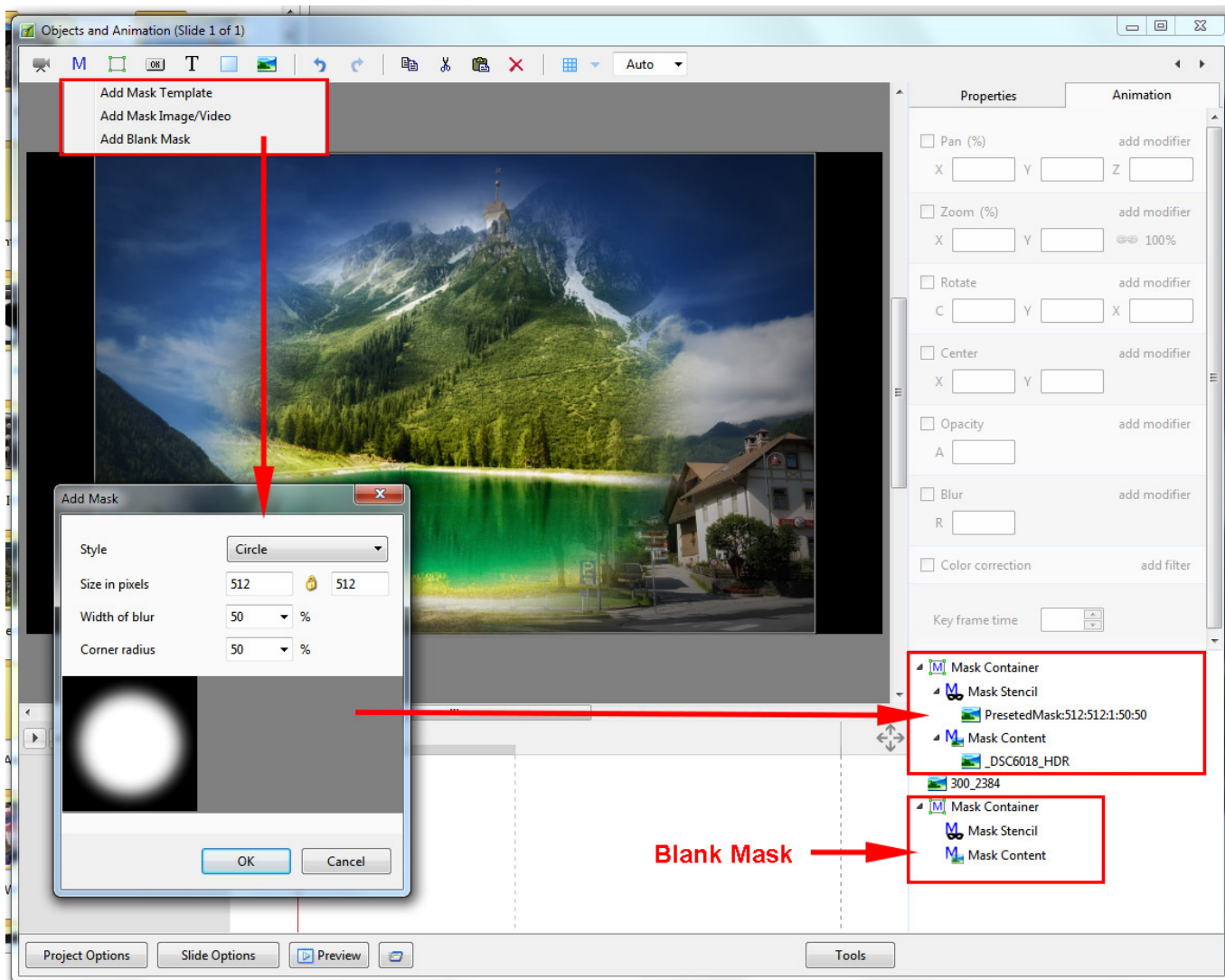


The Mask Menu

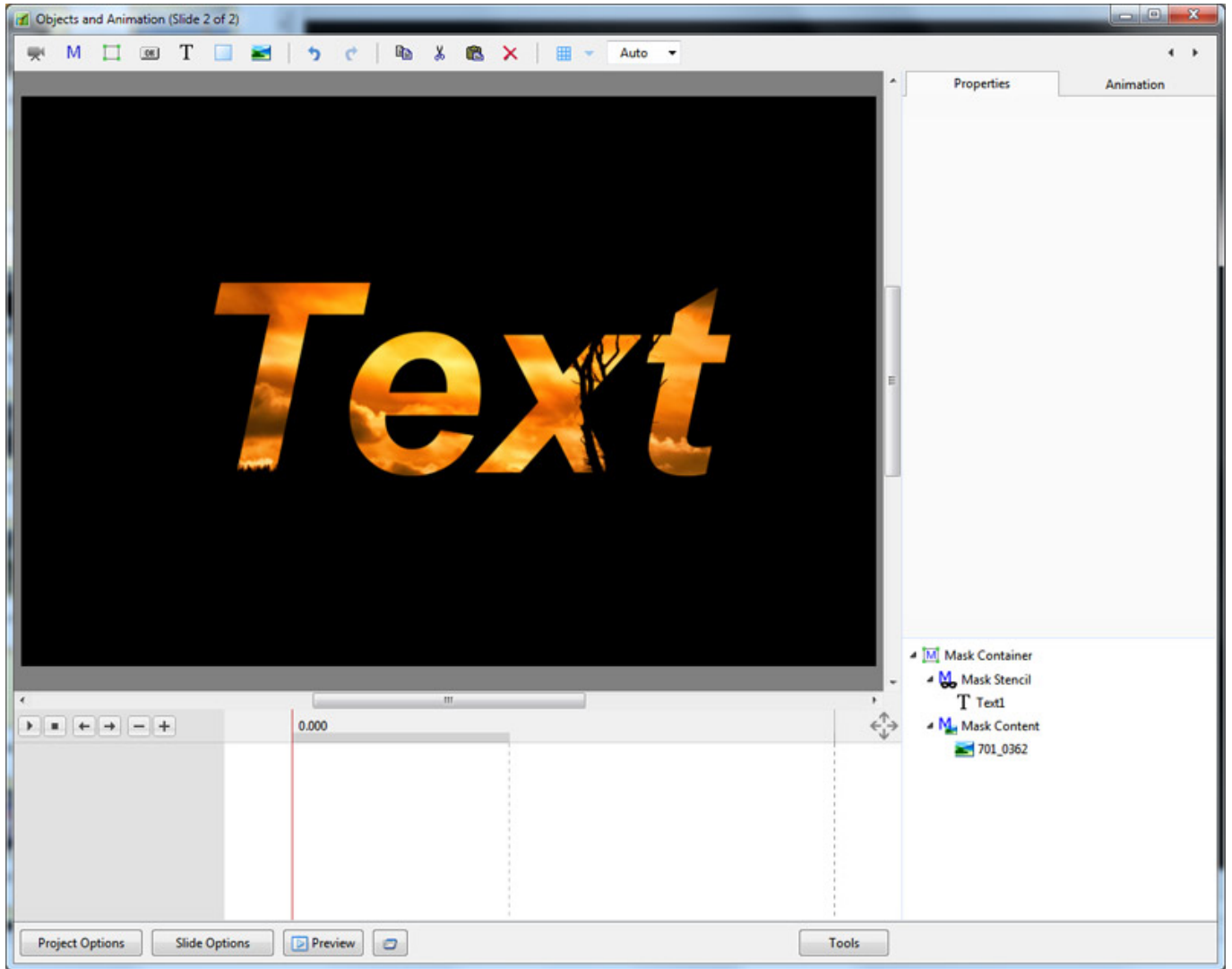
See also the topic on Masks here : [Add a Mask Object](#)

- Click on the Mask Icon or
- Right Click in a blank space
- Click on “Add a Mask Template”
- Choose “Circle” or “Rectangle”





You can use any object as a masking layers in Mask Stencil container. For example, use a Text object as a mask.



From:
<https://docs.pteastudio.com/> - PTE AV Studio

Permanent link:
https://docs.pteastudio.com/en-us/10.0/objectsandanimation_1/masks?rev=1579813526

Last update: 2022/12/19 11:45

