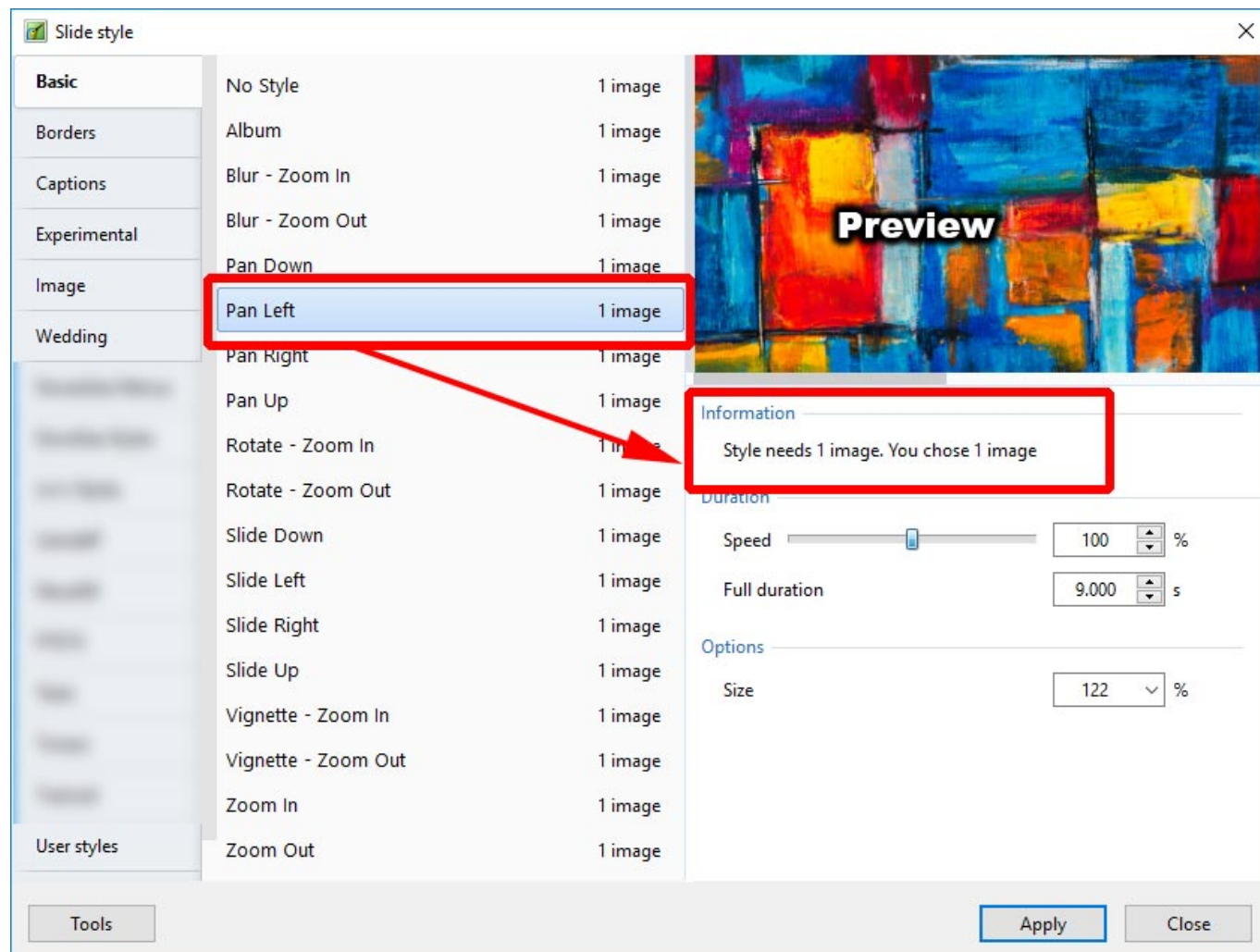


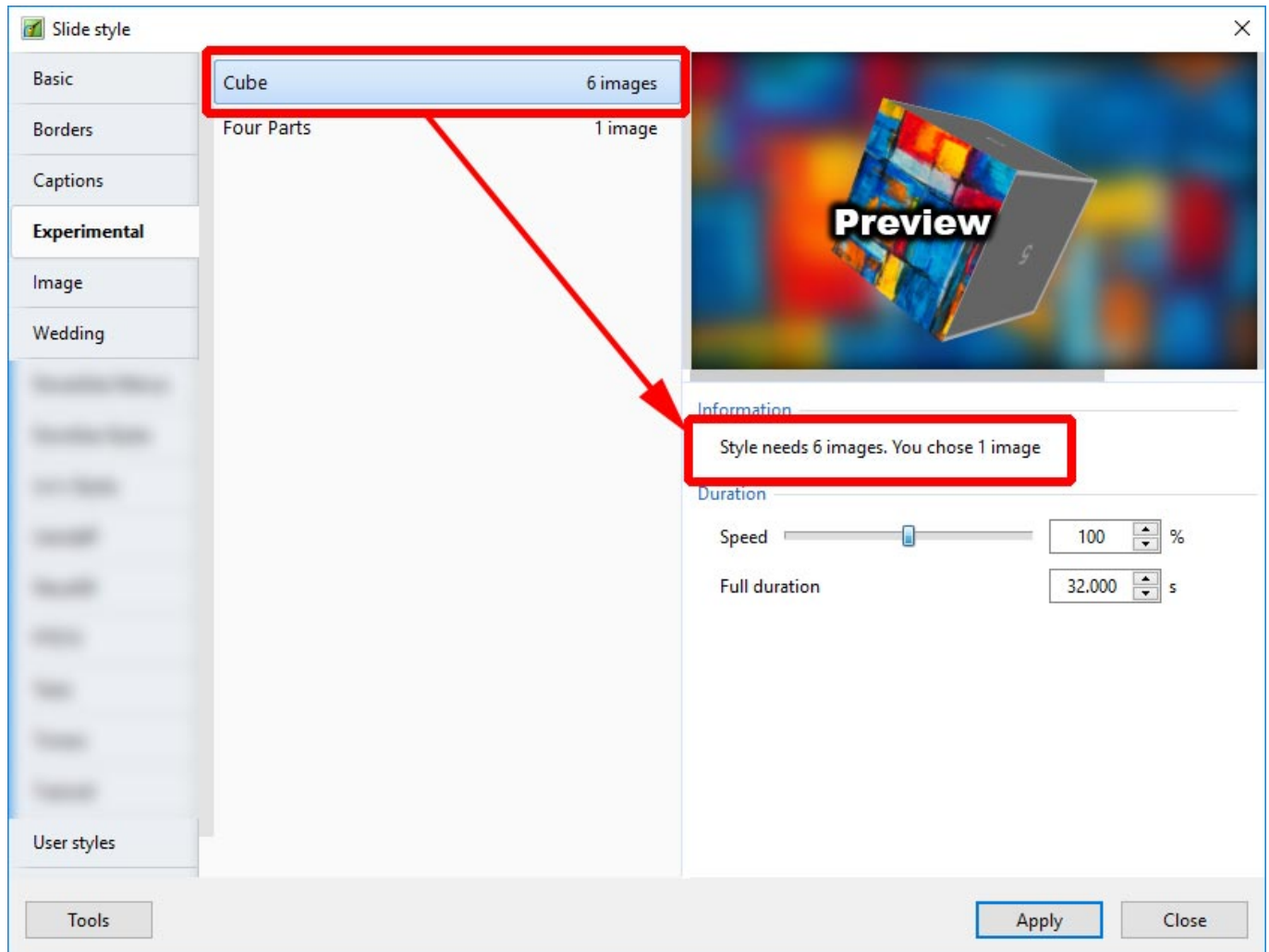
Applying a Style

To apply a Preset Style

- Drag or otherwise add an Image to the Slide List
- Open the Style Dialogue by clicking on "Slide Style"



- In the above example you are told that the Style requires one image and that you have correctly supplied one image
- It is possible to add more than one image, highlight them all and the Style will be applied to all
- The Preview Screen will show the animation/effect
- The Speed and Full Duration of the Style are interlinked and either can be used to match the Style to your desired Duration
- The Options parameter varies and is at present only available in PTE's own Preset Styles



- In the above example you are told that the Style requires six images and that you have correctly supplied six images
- The Preview Screen will show the animation/effect
- The Speed and Full Duration of the Style are interlinked and either can be used to match the Style to your desired Duration

From:

<https://docs.pteastudio.com/> - PTE AV Studio

Permanent link:

<https://docs.pteastudio.com/en-us/10.0/slide-styles/apply?rev=1587734685>

Last update: **2022/12/19 11:45**

