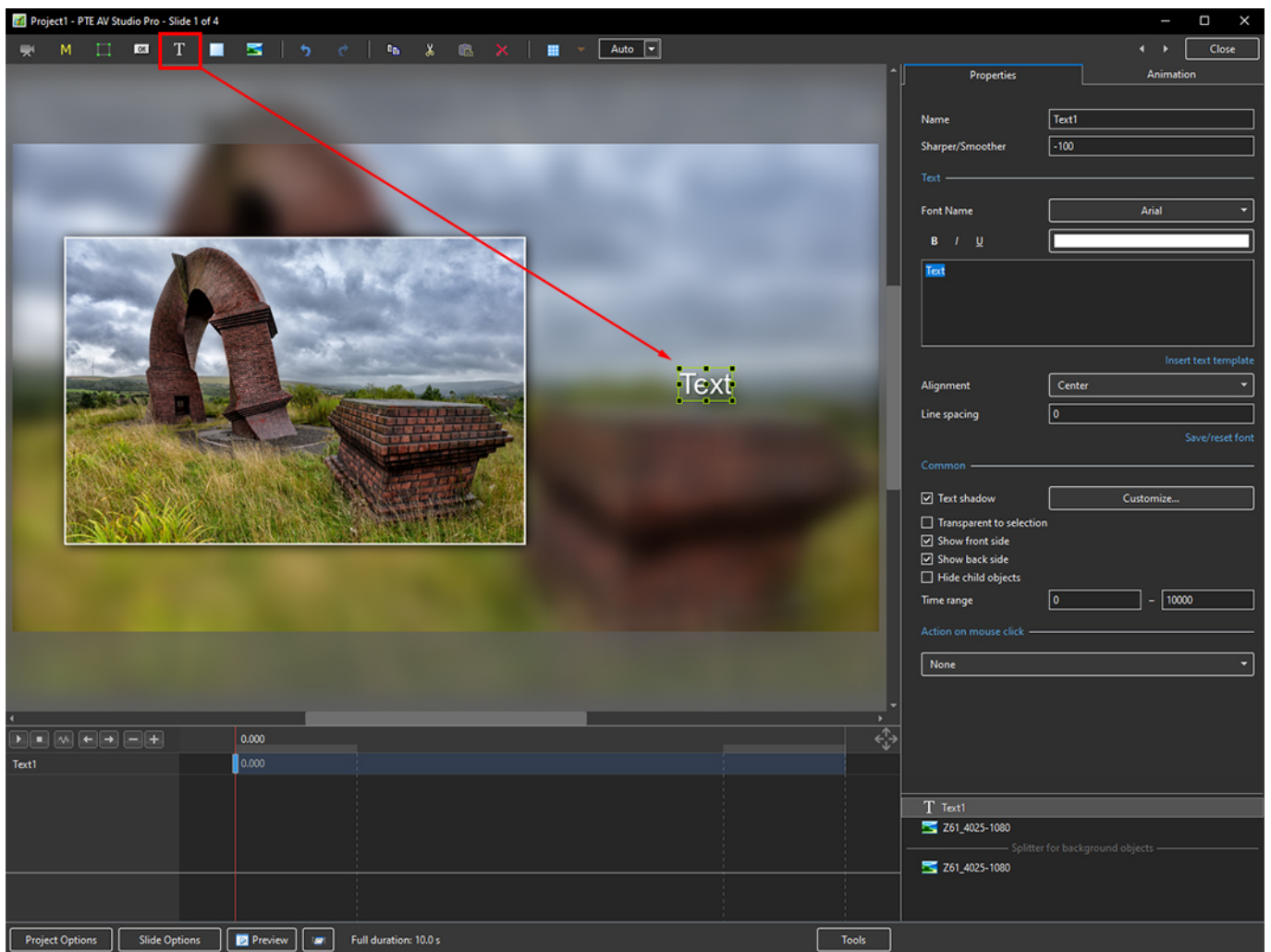


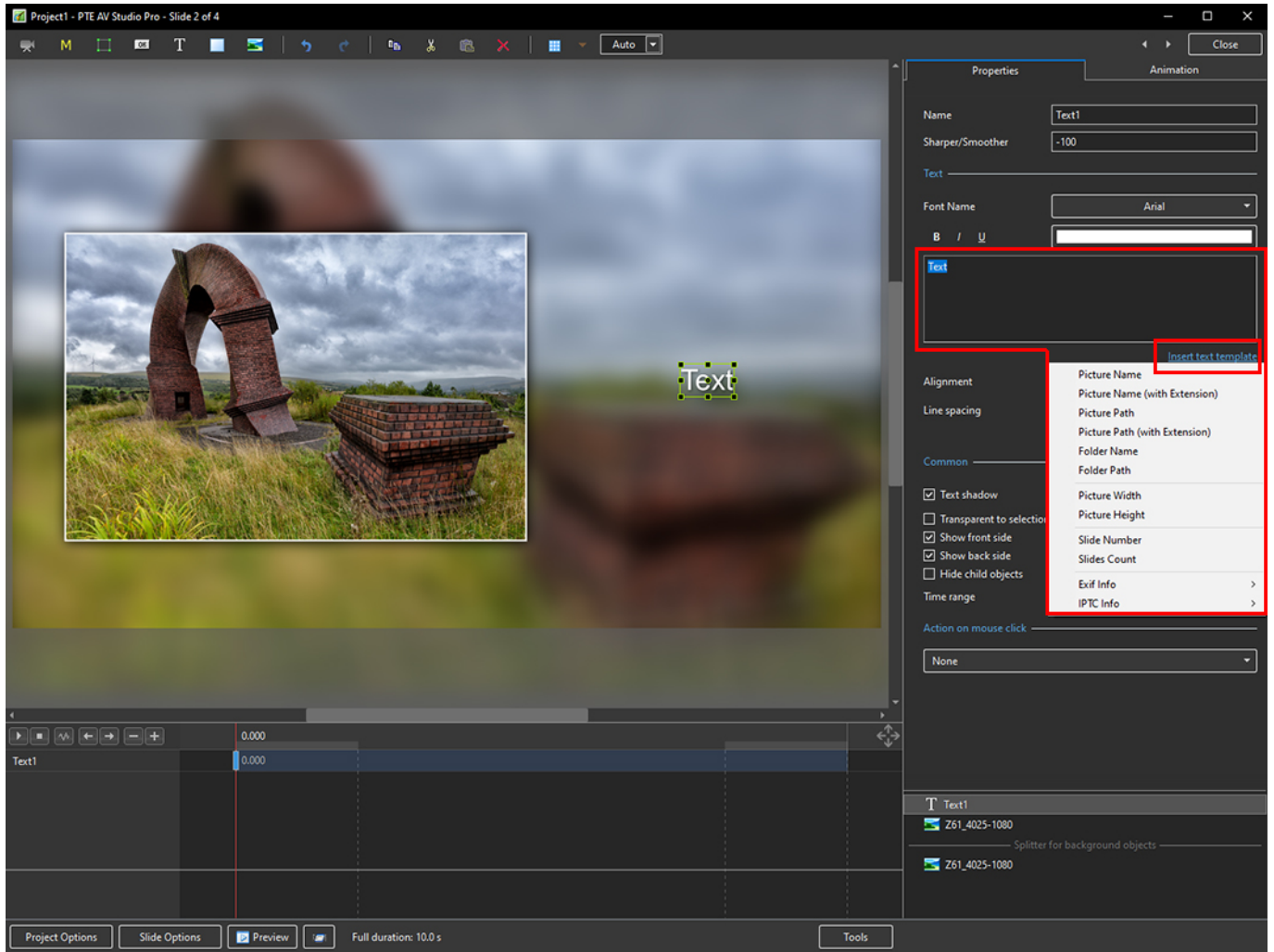
# Add Text with EXIF and/or IPTC

## Adding a text comment in the Objects & Animation editor and adding metadata from EXIF and/or IPTC

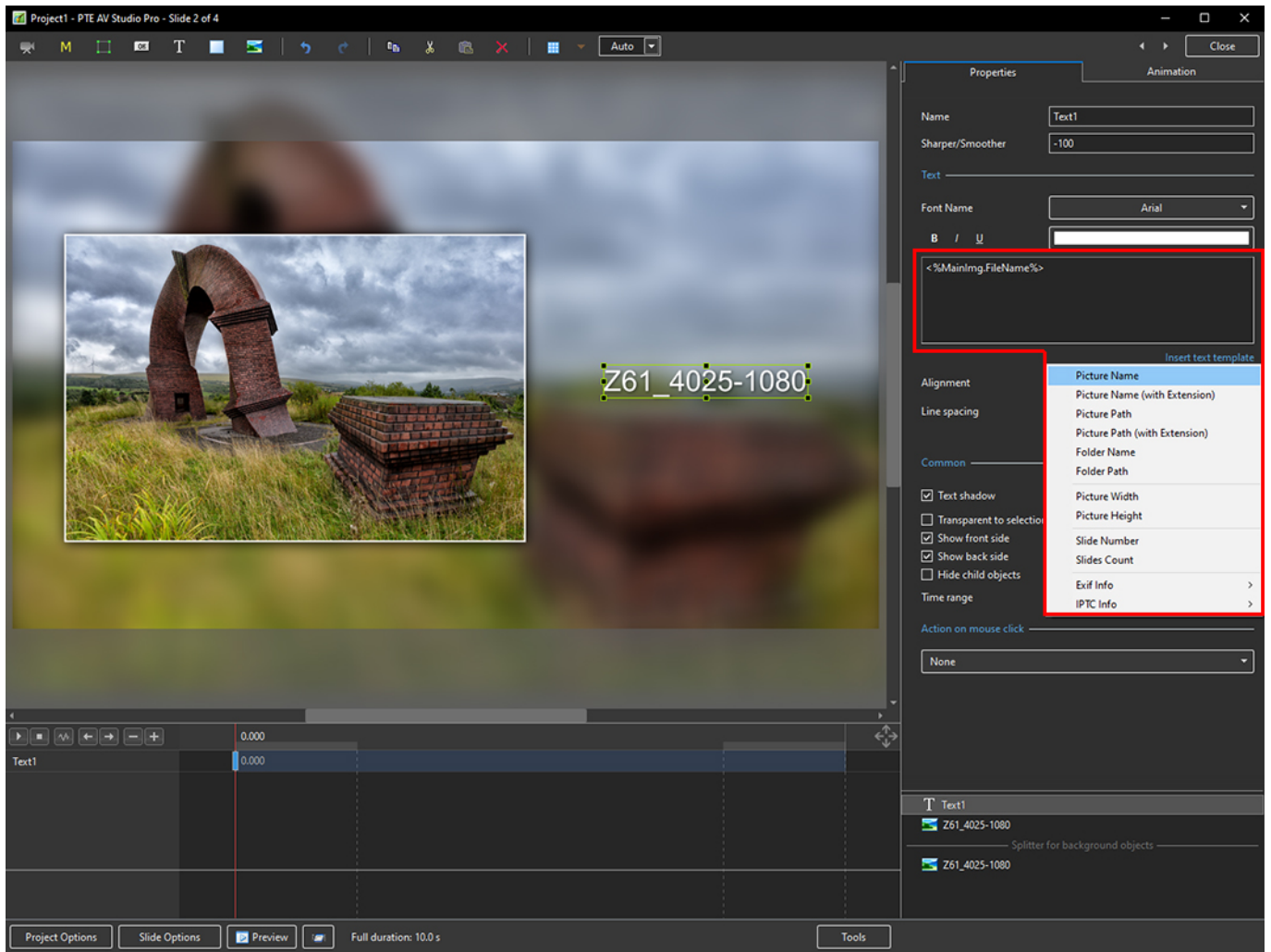
1. Add a Text Object in Objects and Animation



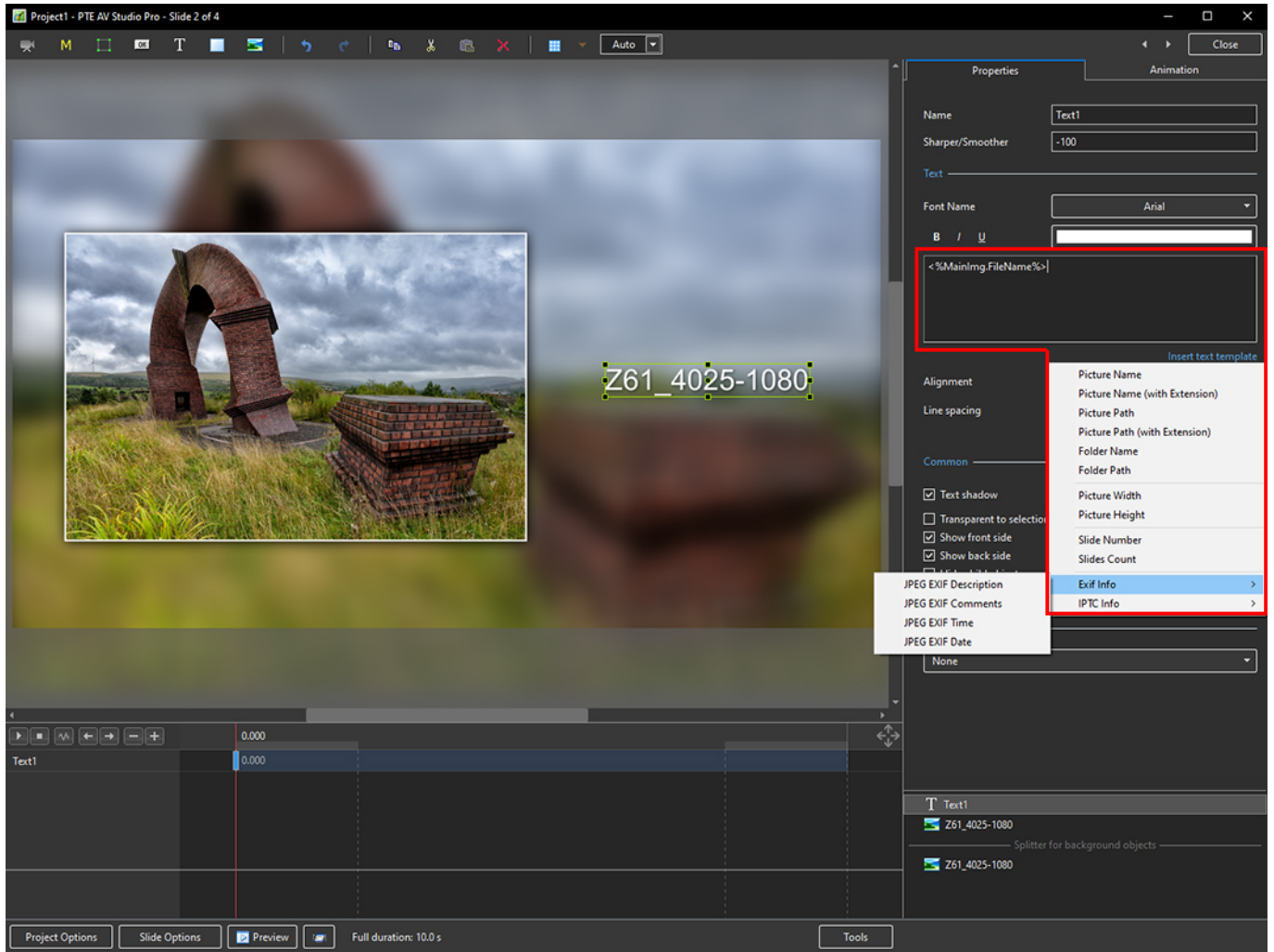
2. In the Properties Tab for the Text Object, click on Insert Text Template



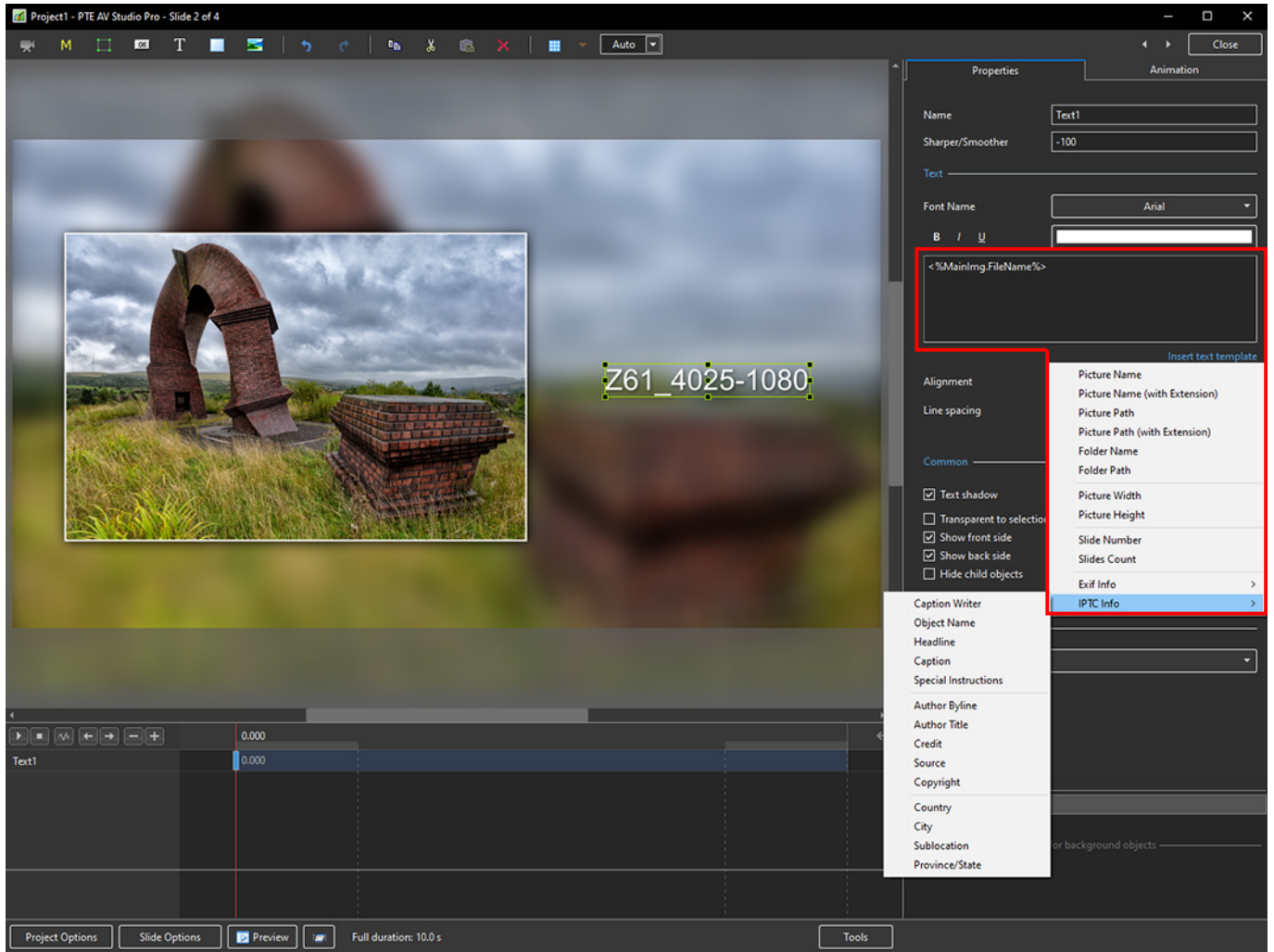
3. The Dropdown Menu shows the available options - Picture Name has been chosen here



#### 4. Showing the available EXIF info

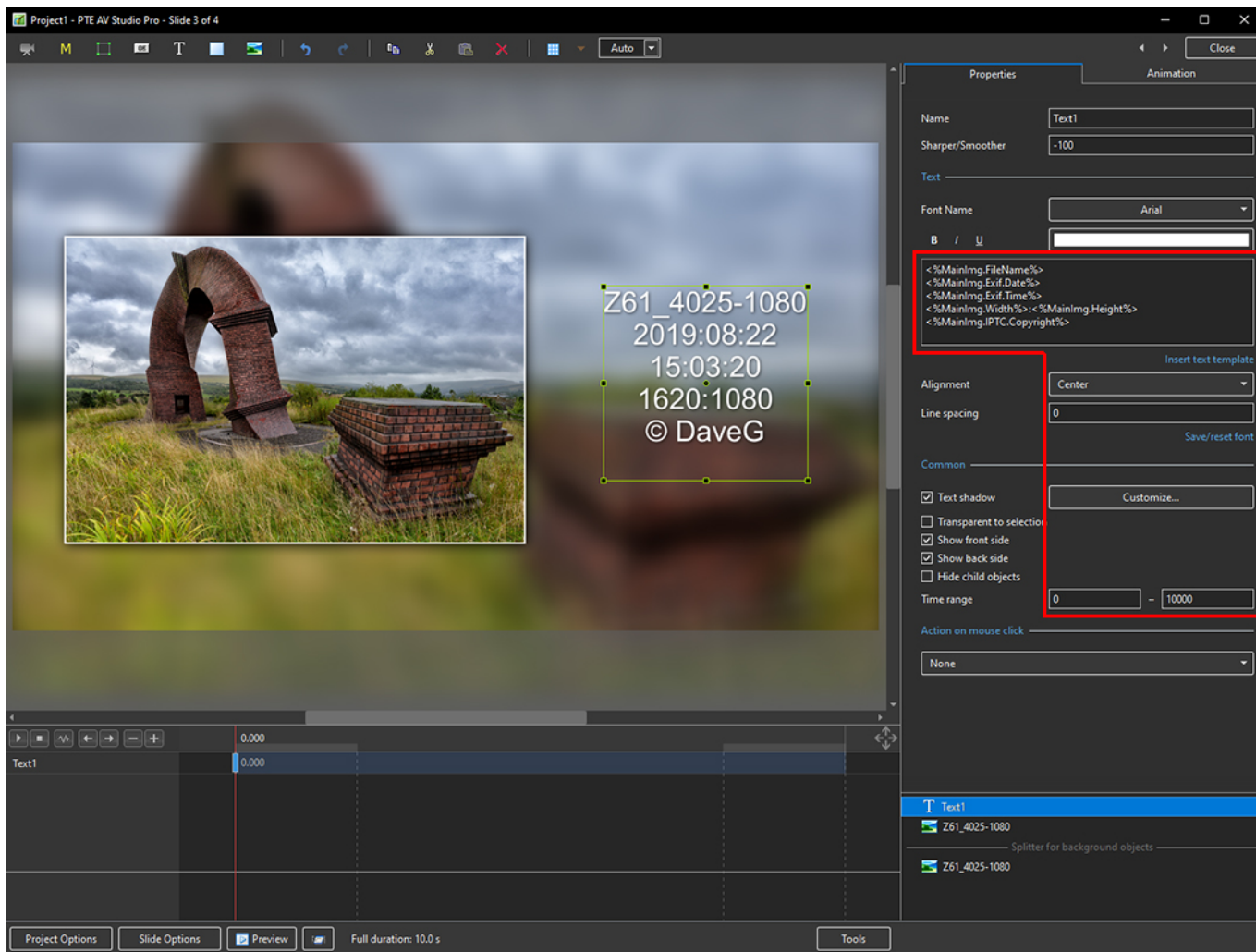


## 5. Showing the available IPTC info



6. In the following example, options from all sections have been chosen - Main section (Picture Name, Height, Width), EXIF (Date, Time) and IPTC (Copyright)

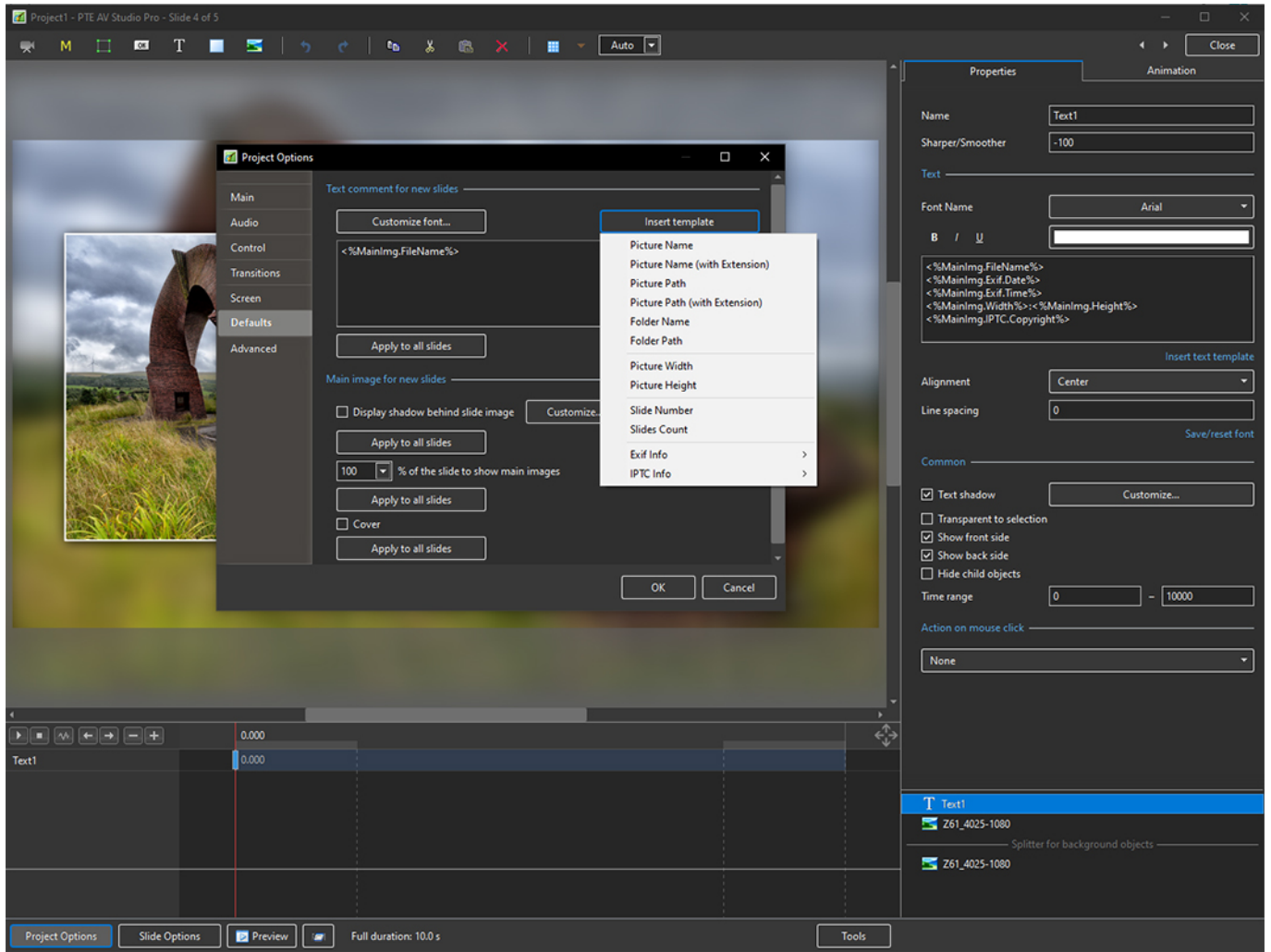




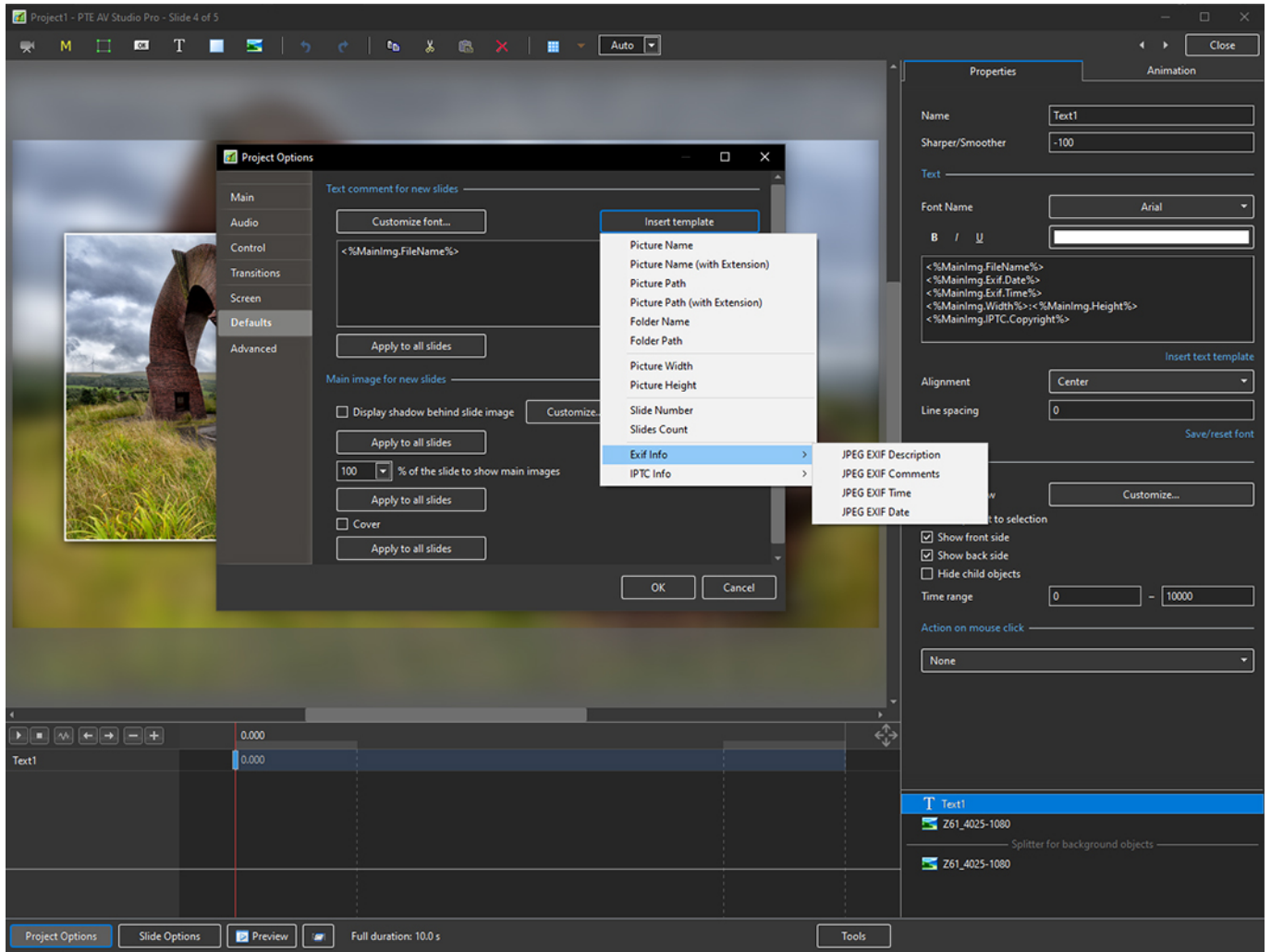
## Adding a text comment in the Project Options / Defaults and adding metadata from EXIF and/or IPTC

- It is possible to add the Text Comment in Project Options / Defaults / Text Comment for New Slides

1. Open Project Options / Defaults and, in Text Comment for New Slides, click on Insert Template

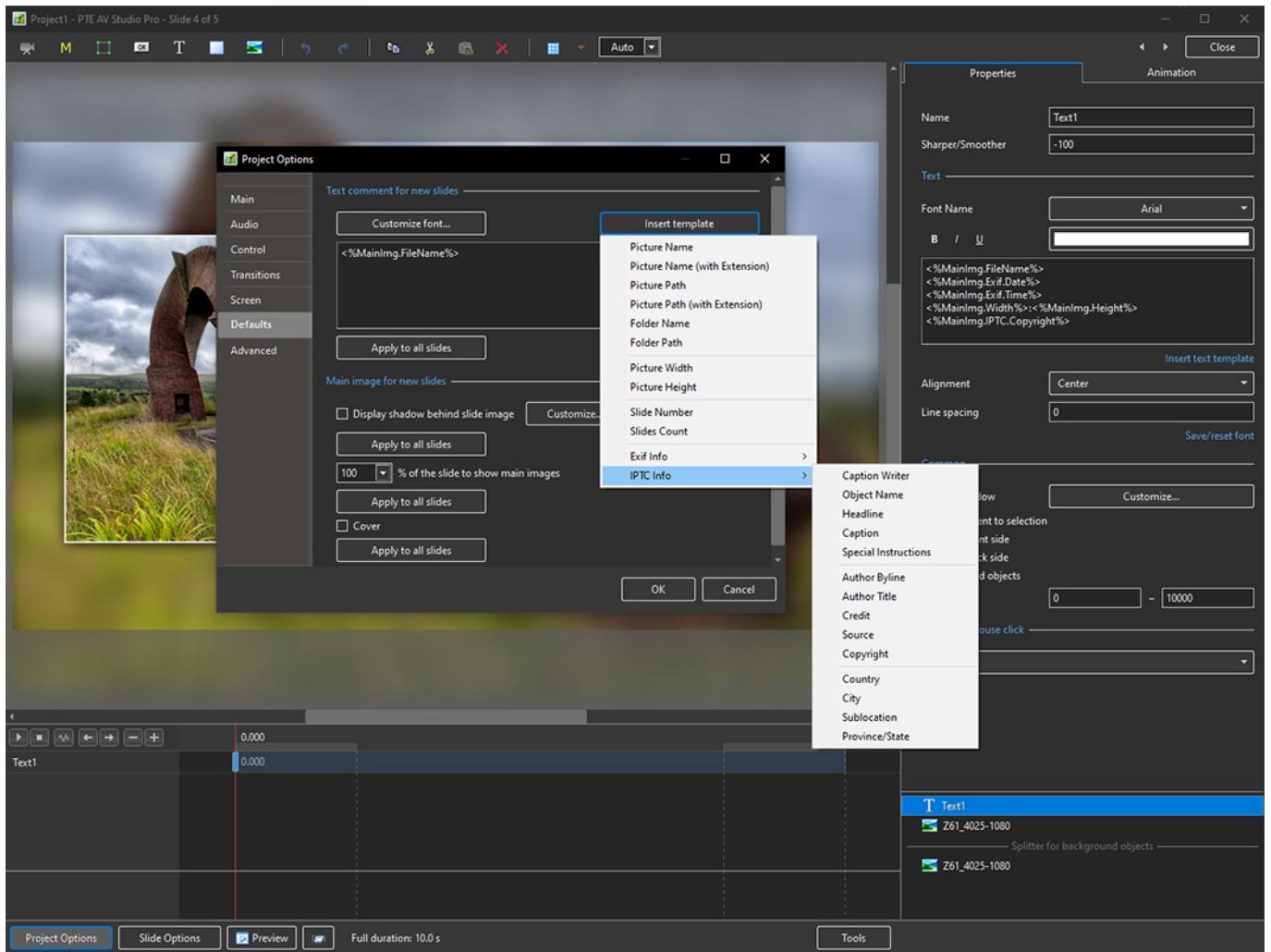


## 2. Showing the Main Options and EXIF Options

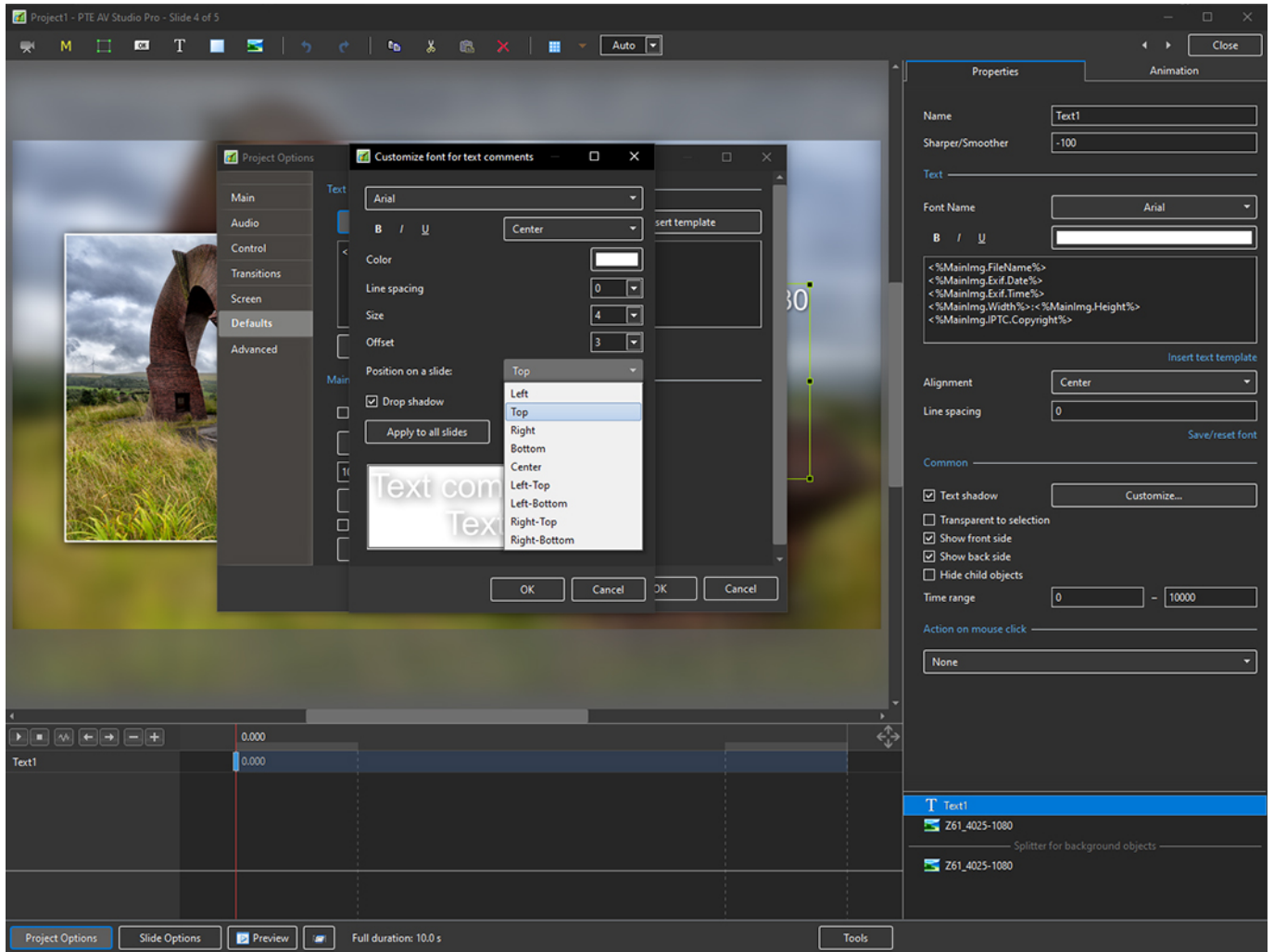


### 3. Showing the Main Options and IPTC Options





4. Click on Customise Font to Edit the Position of the Text Comment on the Slide



- The Text Comment will then be shown on all New Slides and there is an Option to Add the Text Comment to all existing Slides

From:  
<https://docs.pteastudio.com/> - **PTE AV Studio**

Permanent link:  
[https://docs.pteastudio.com/en-us/11.0/how\\_to\\_v10/addexif?rev=1671449316](https://docs.pteastudio.com/en-us/11.0/how_to_v10/addexif?rev=1671449316)

Last update: **2022/12/19 11:28**

