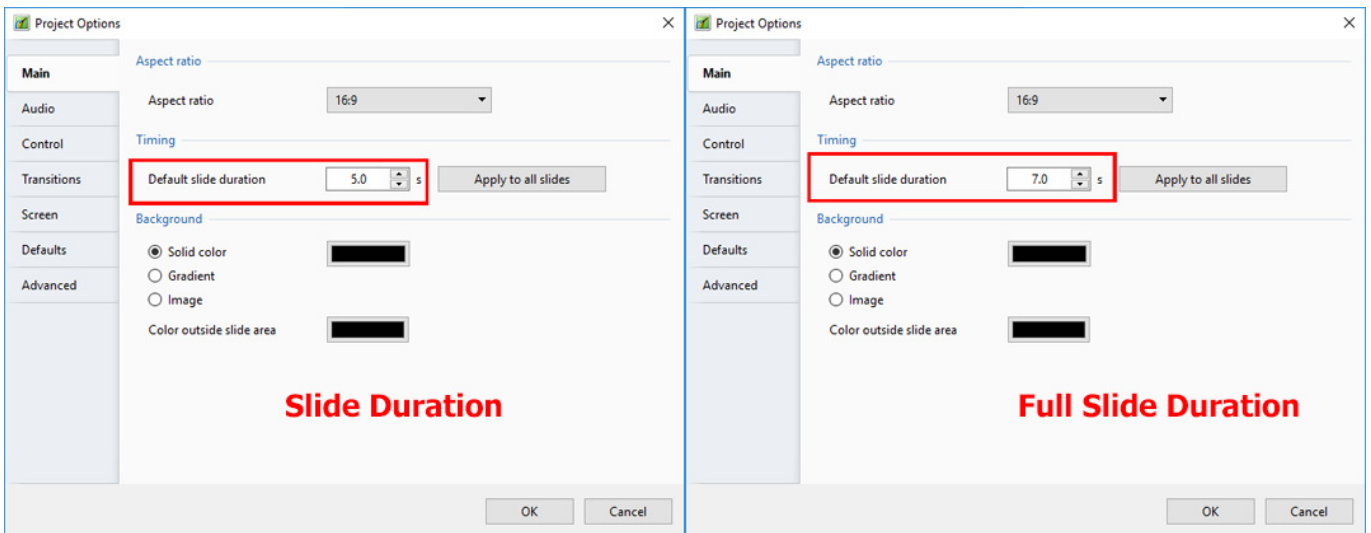
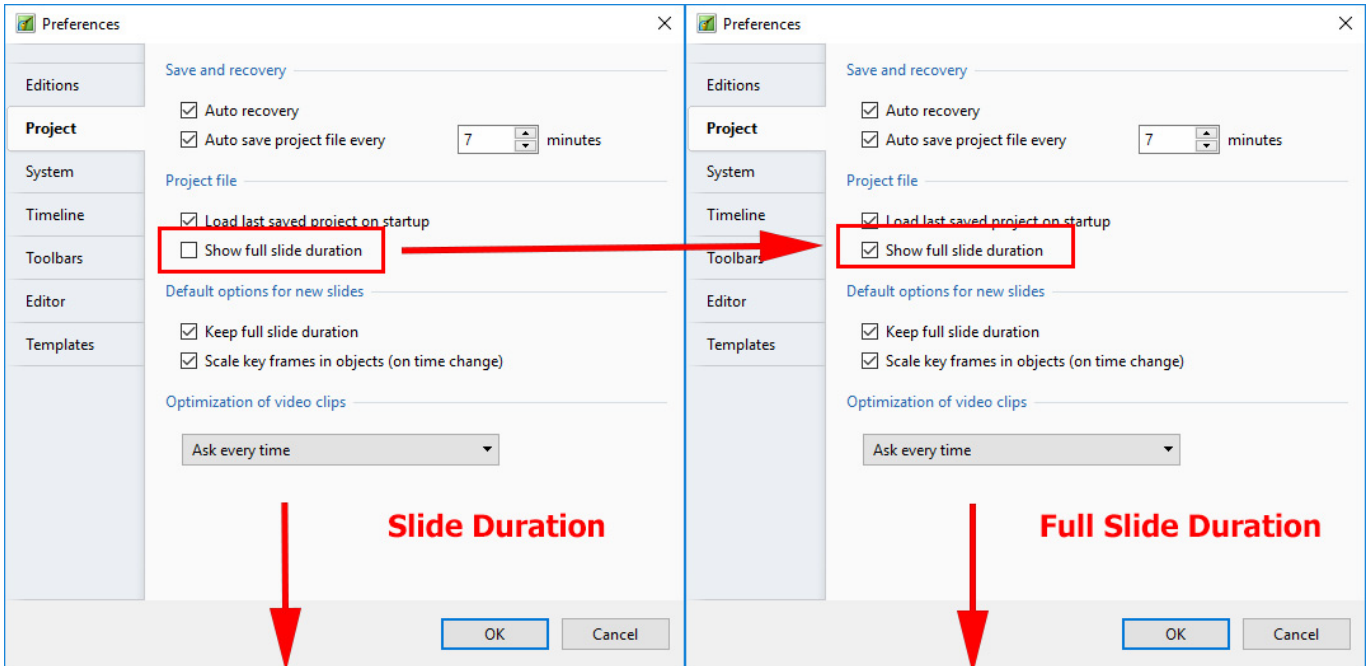


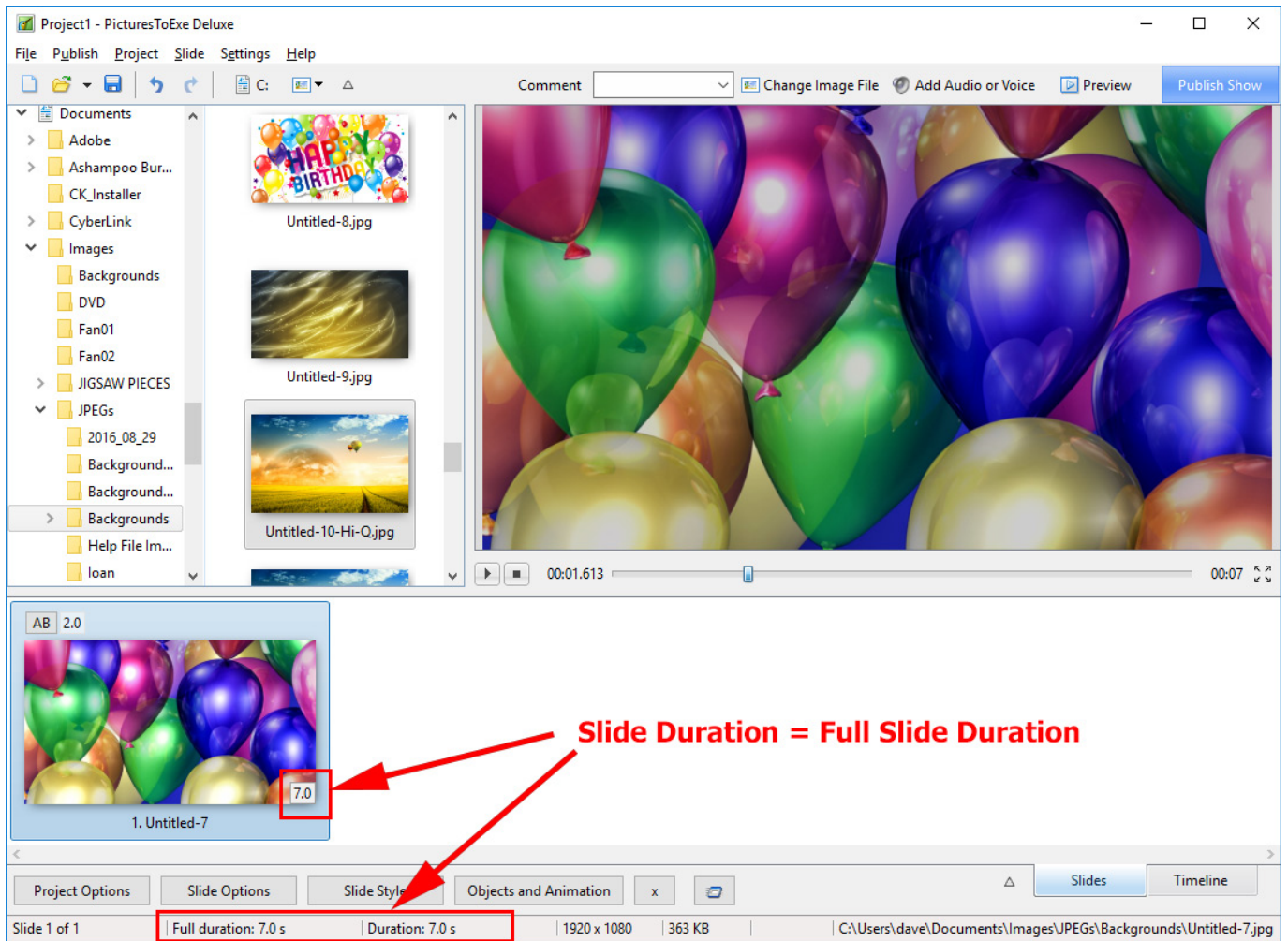
# Slide Duration

## Slide Duration and Full Slide Duration

Depending on the settings of Settings / Preferences and Project Options the duration seen in the Slide List can change.

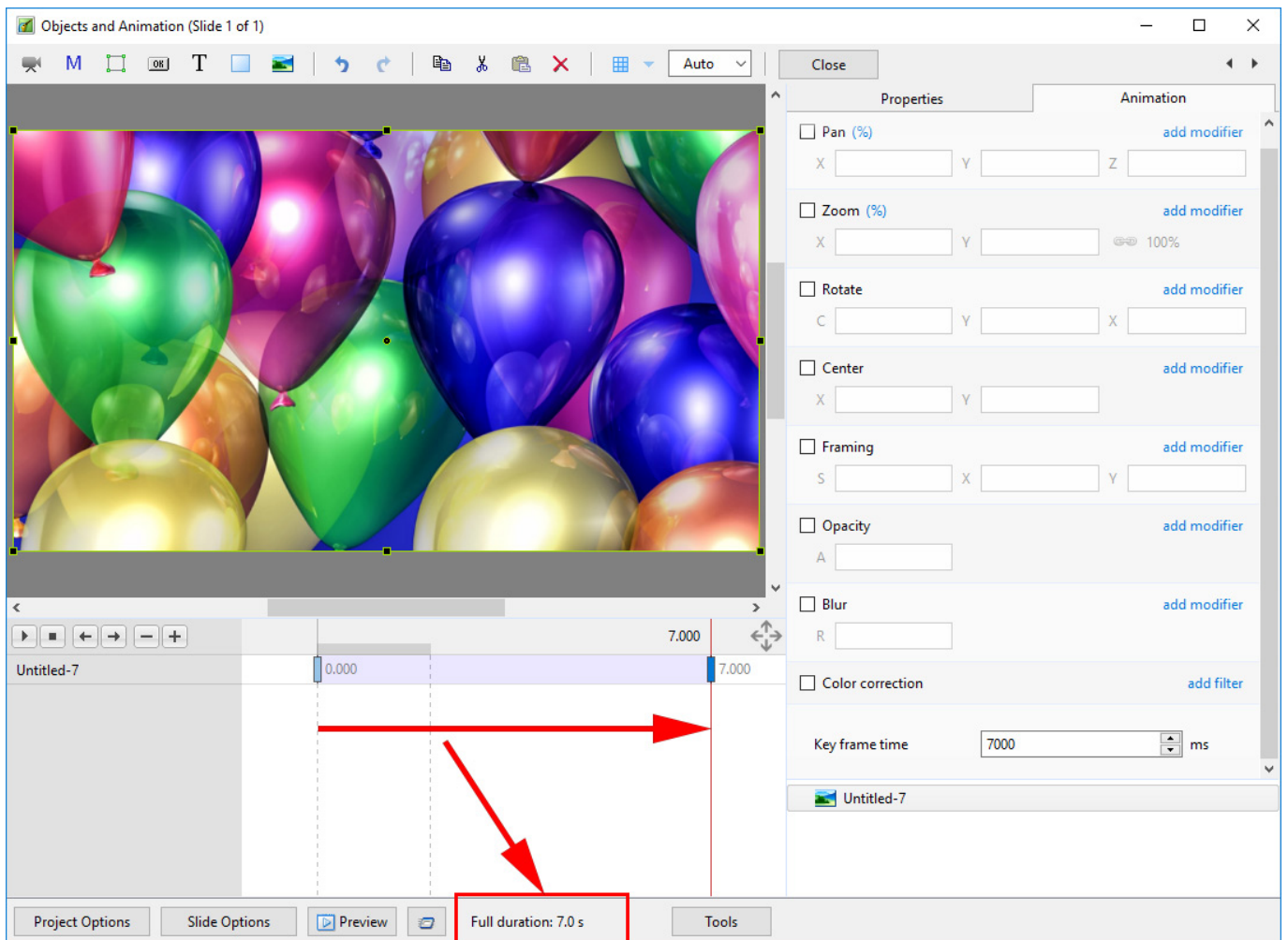


If a single slide is added to the Slide List the Main Screen View looks like this:



The Status bar shows the Full (Slide) Duration and the (Slide) Duration. The Slide Icon displays the Slide Duration. For a single slide the Duration will equal the Full Duration because there is no following slide transition time to take into account - or the following slide transition time is zero.

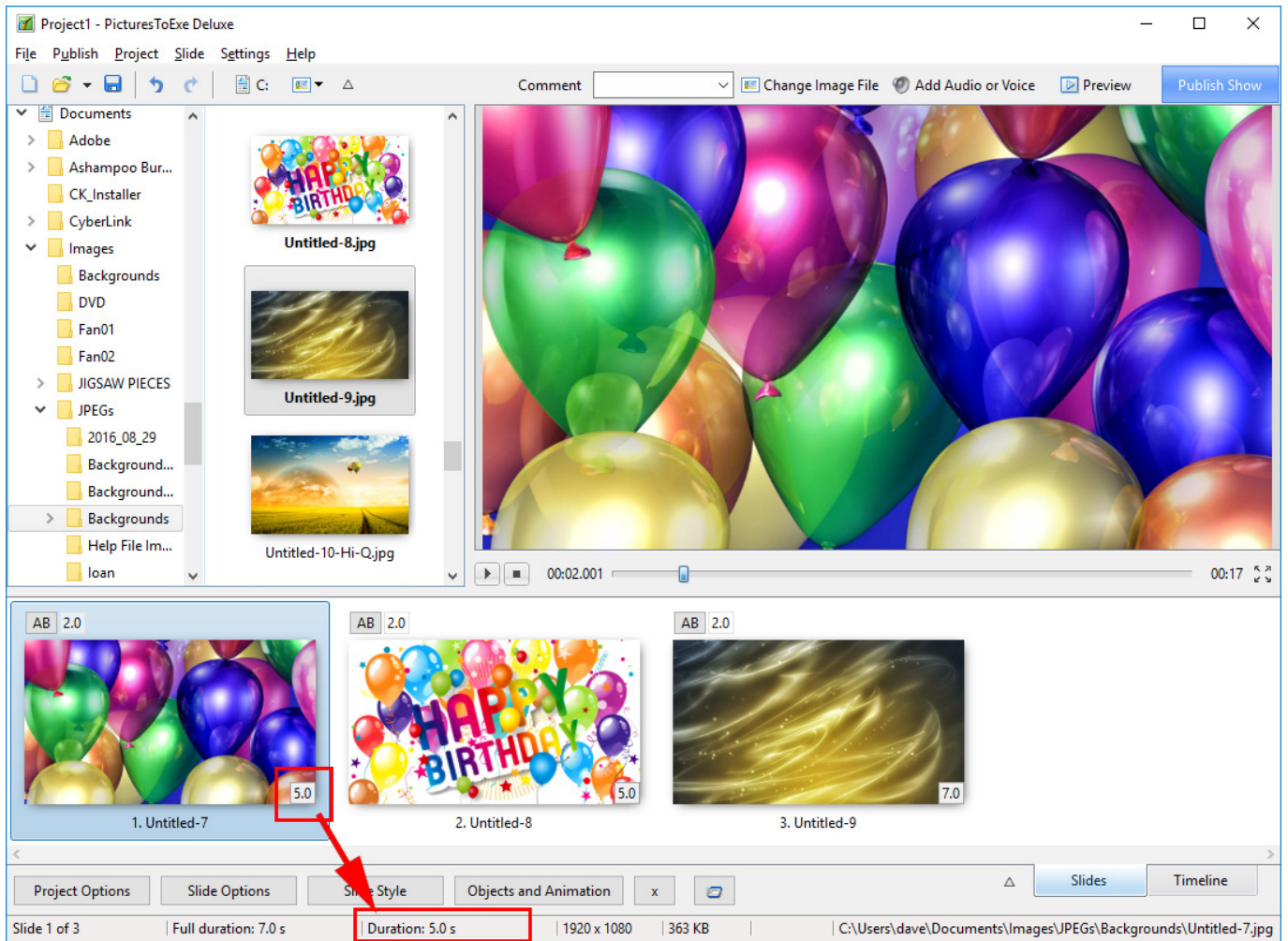
The corresponding Objects and Animation Screen looks like this:



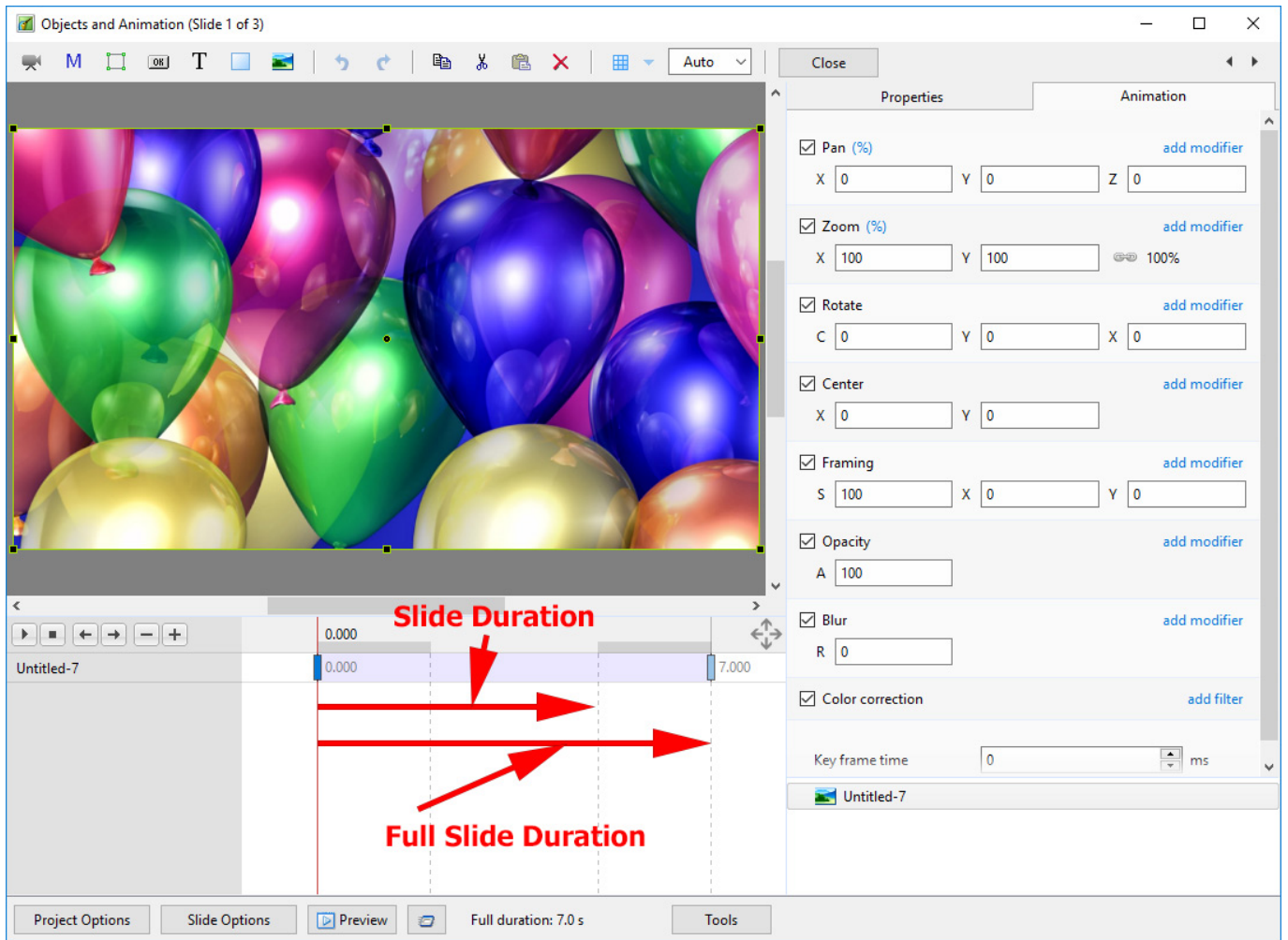
## Adding another slide

### Show Full Slide Duration Un-Ticked:

Adding a second slide with a 2 second transition time causes a change in the displayed (Slide) Duration. Note that the Full (Slide) Duration remains the same.



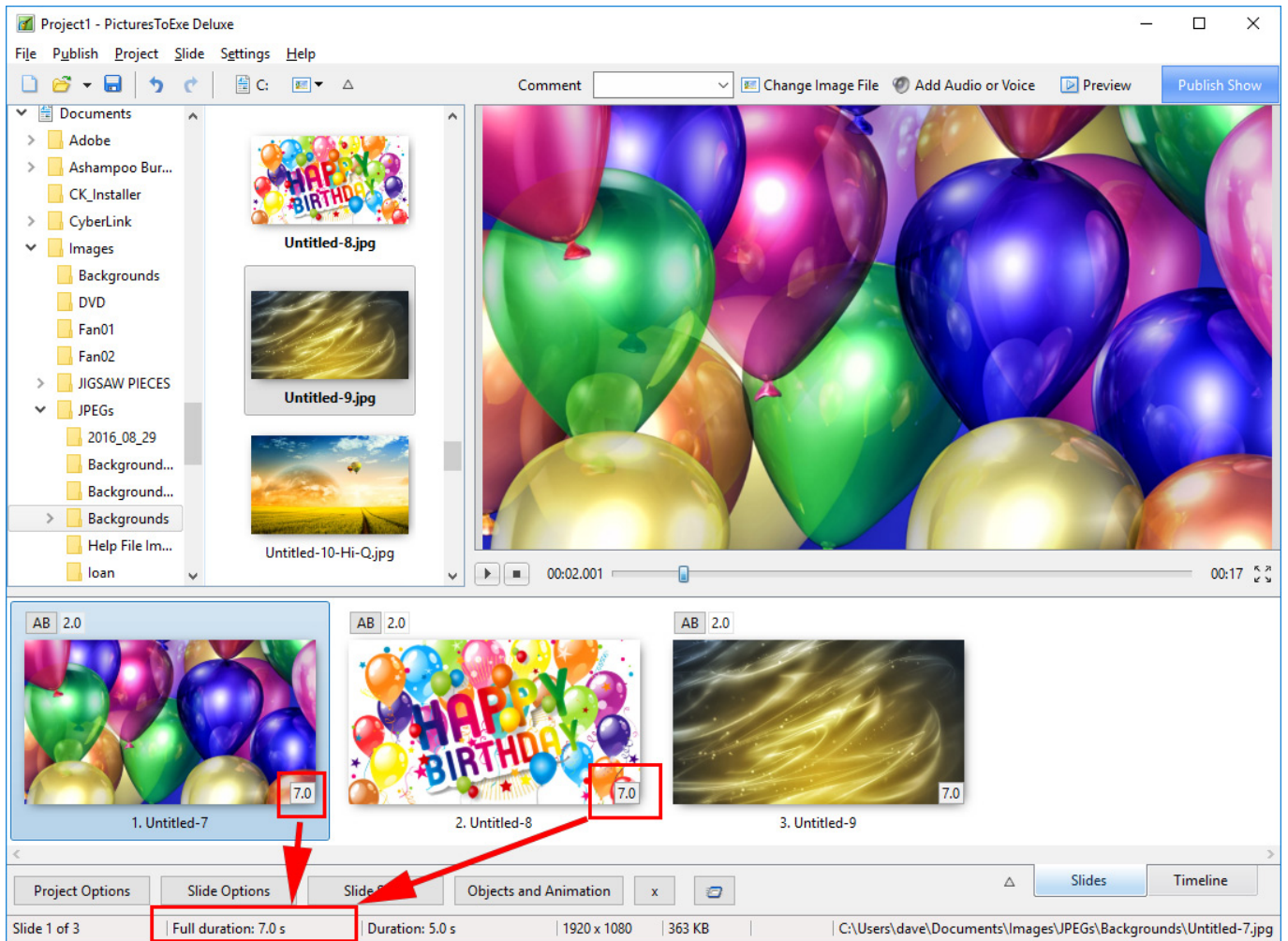
Objects and Animation View:



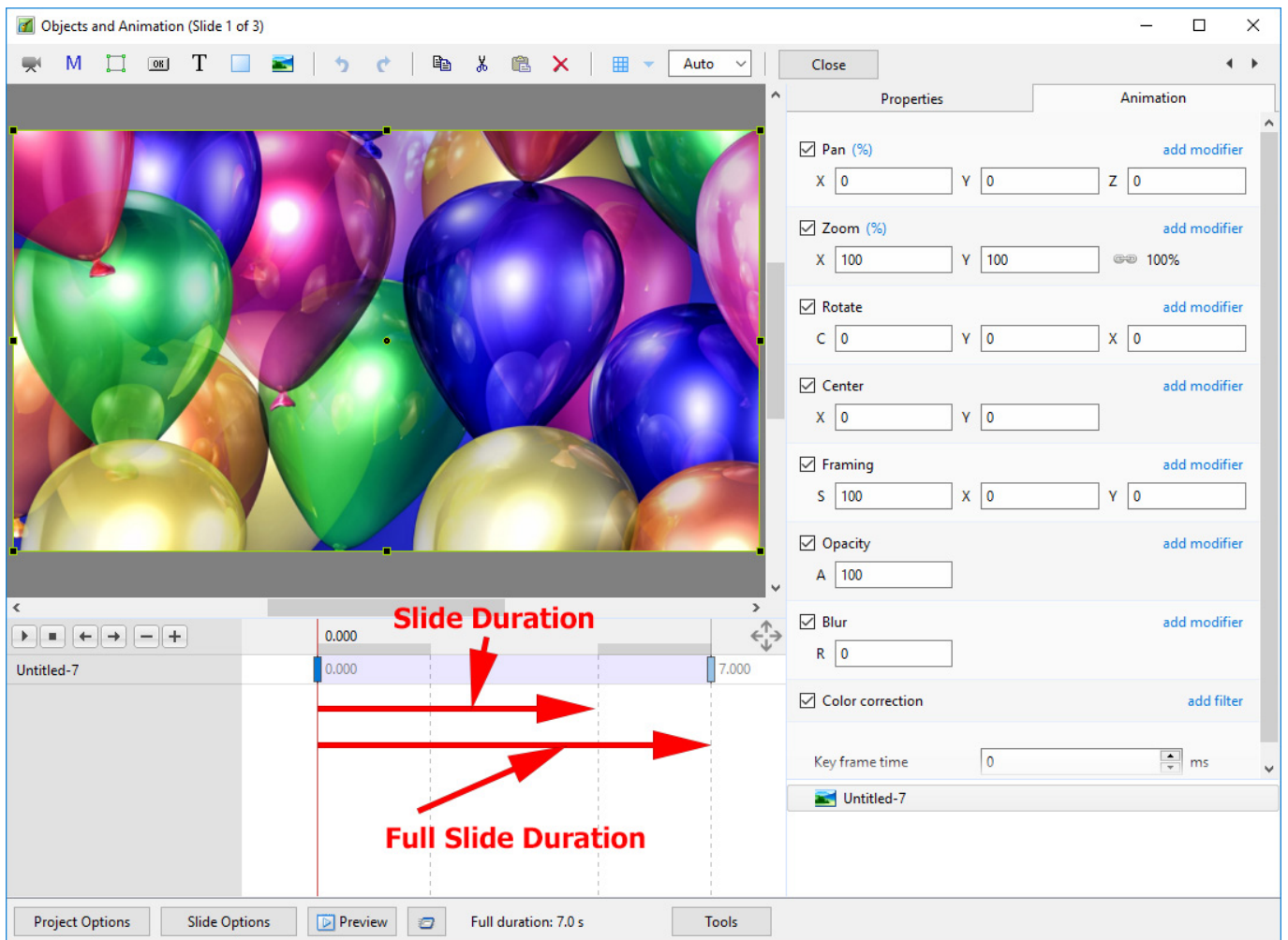
The (Slide) Duration of Slide 1 remains at 5 seconds but because Slide 1 is visible from the beginning of its own transition to the end of the Slide 2 transition (at varying opacities) its Full (Slide) Duration is 7 seconds.

### Show Full Slide Duration Ticked:

Adding a second slide with a 2 second transition time causes a change in the Duration Icon on the Slide. Note that the Full (Slide) Duration and Full (Slide) Duration remain the same.



The Objects and Animation Screen remains the same.



## Example

Key Frames in Slide 1 are placed at Zero and 7 seconds (7000ms)

Key Frames in Slide 2 are placed at 5 seconds (0ms) and 12 seconds (7000ms)

*Below is a **\*\*Simulation\*\*** of two slides in Objects and Animation Screen:*



The Timeline View:



The screenshot displays the PTE AV Studio interface. At the top, the window title is "Project1 - PicturesToExe Deluxe". The menu bar includes "File", "Publish", "Project", "Slide", "Settings", and "Help". Below the menu bar, there are icons for file operations and a "Comment" field. The main workspace is divided into a left sidebar with a file tree, a central preview area showing a slide with colorful balloons, and a bottom timeline. The timeline shows three slides: "1. Untitled-7", "2. Untitled-8", and "3. Untitled-9". Red arrows and text labels are overlaid on the timeline to illustrate slide durations: "Slide 1 Duration" (from 0:00 to 0:05), "Slide 1 Full Duration" (from 0:00 to 0:07), "Slide 2 Duration" (from 0:05 to 0:10), and "Slide 2 Full Duration" (from 0:07 to 0:13). The bottom status bar shows "Slide 1 of 3", "Full duration: 7.0 s", "Duration: 5.0 s", "1920 x 1080", "363 KB", and the file path "C:\Users\dave\Documents\Images\JPEGs\Backgrounds\Untitled-7.jpg".

From:  
<https://docs.ptavstudio.com/> - **PTE AV Studio**

Permanent link:  
[https://docs.ptavstudio.com/en-us/11.0/how\\_to\\_v9/duration?rev=1671449314](https://docs.ptavstudio.com/en-us/11.0/how_to_v9/duration?rev=1671449314)

Last update: **2022/12/19 11:28**

