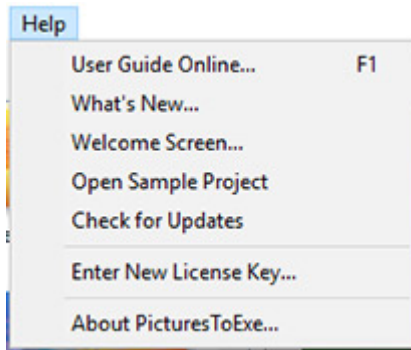


# The Help Menu

The “Main Menu”, “Help” provides 6 menu options as shown below:



These menu items provide the following functions :

- **User Guide Online...** - provides a link to the online user guides (German, French, Italian and English);
- **What's New** - provides a link to an online page with details of the additions to the latest version of Pictures To Exe;
- **Welcome Screen** - opens the Welcome Screen;
- **Check for Updates** - enables the “check for updates” process which advises if a new version is available;
- **Enter New Licence Key...** - this opens a dialog box into which a new licence key can be entered;
- **About PicturesToExe...** - shows the version number of the installed program together with other useful links and details.

*Keywords for images on this page: new project; save; open; separator; undo; redo; drives; picture; size; file; list; text; comment; change; image; video; audio; file; record; voice; spacer; publish; options; slide; style; objects; animation; preview; editor; current position; remove; slide number; full; duration; pixel; size; media; name; editions; deluxe; essentials.*

From:  
<https://docs.ptavstudio.com/> - **PTE AV Studio**

Permanent link:  
[https://docs.ptavstudio.com/en-us/11.0/main\\_menu\\_1/help?rev=1671451830](https://docs.ptavstudio.com/en-us/11.0/main_menu_1/help?rev=1671451830)

Last update: **2022/12/19 12:10**

