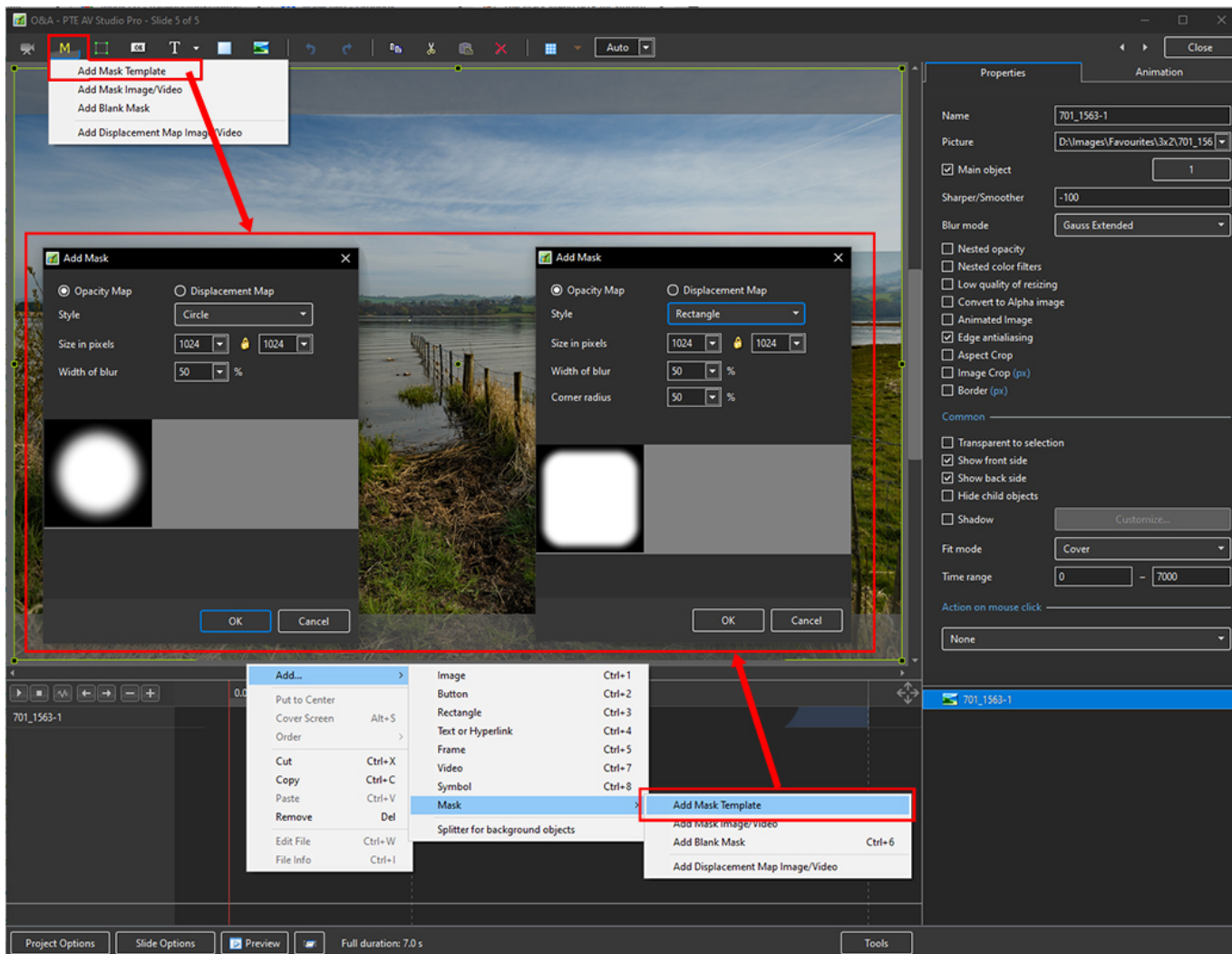
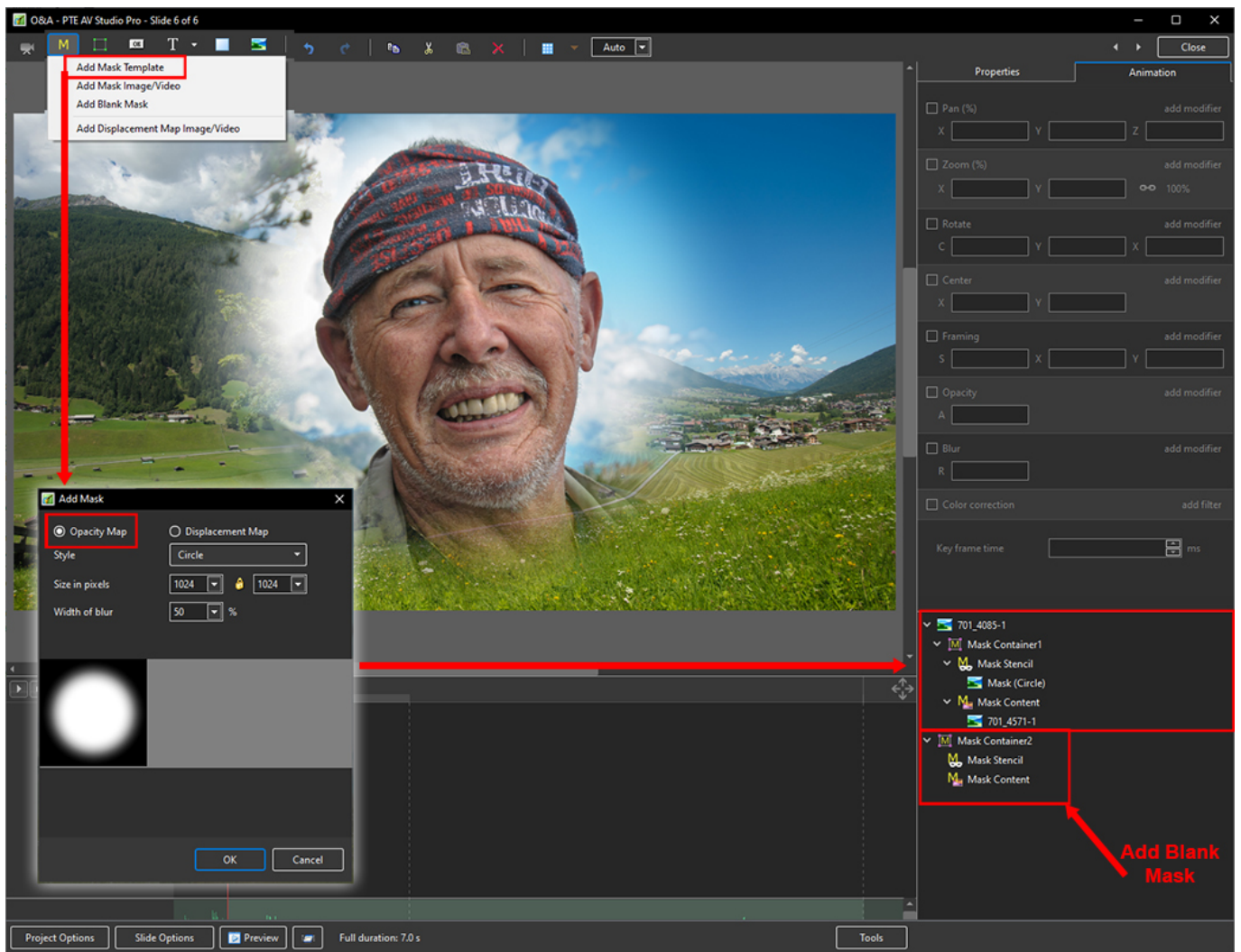


# The Mask Menu

See also the topic on Masks here : [Add a Mask Object](#)

- Click on the Mask Icon or
- Right Click in a blank space
- Click on “Add a Mask Template”
- Choose “Circle” or “Rectangle”

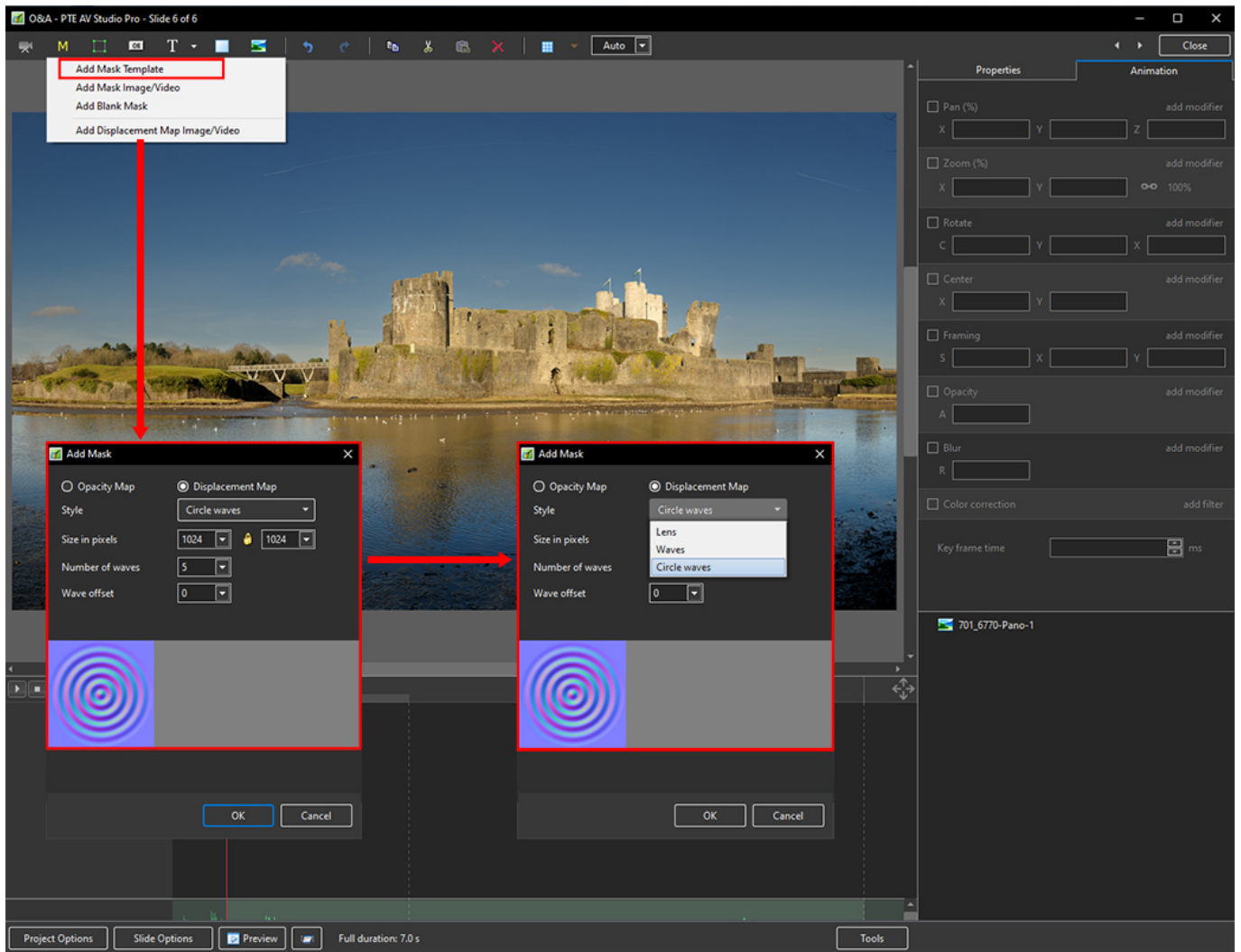




- You can use any object as a masking layers in Mask Stencil container
- Remember - White Reveals and Black Conceals
- For example, use a White Text object as a mask



## Displacement Map Effect



From:  
<https://docs.pteastudio.com/> - PTE AV Studio

Permanent link:  
[https://docs.pteastudio.com/en-us/11.0/objectsandanimation\\_1/masks?rev=1675860134](https://docs.pteastudio.com/en-us/11.0/objectsandanimation_1/masks?rev=1675860134)

Last update: 2023/02/08 12:42

