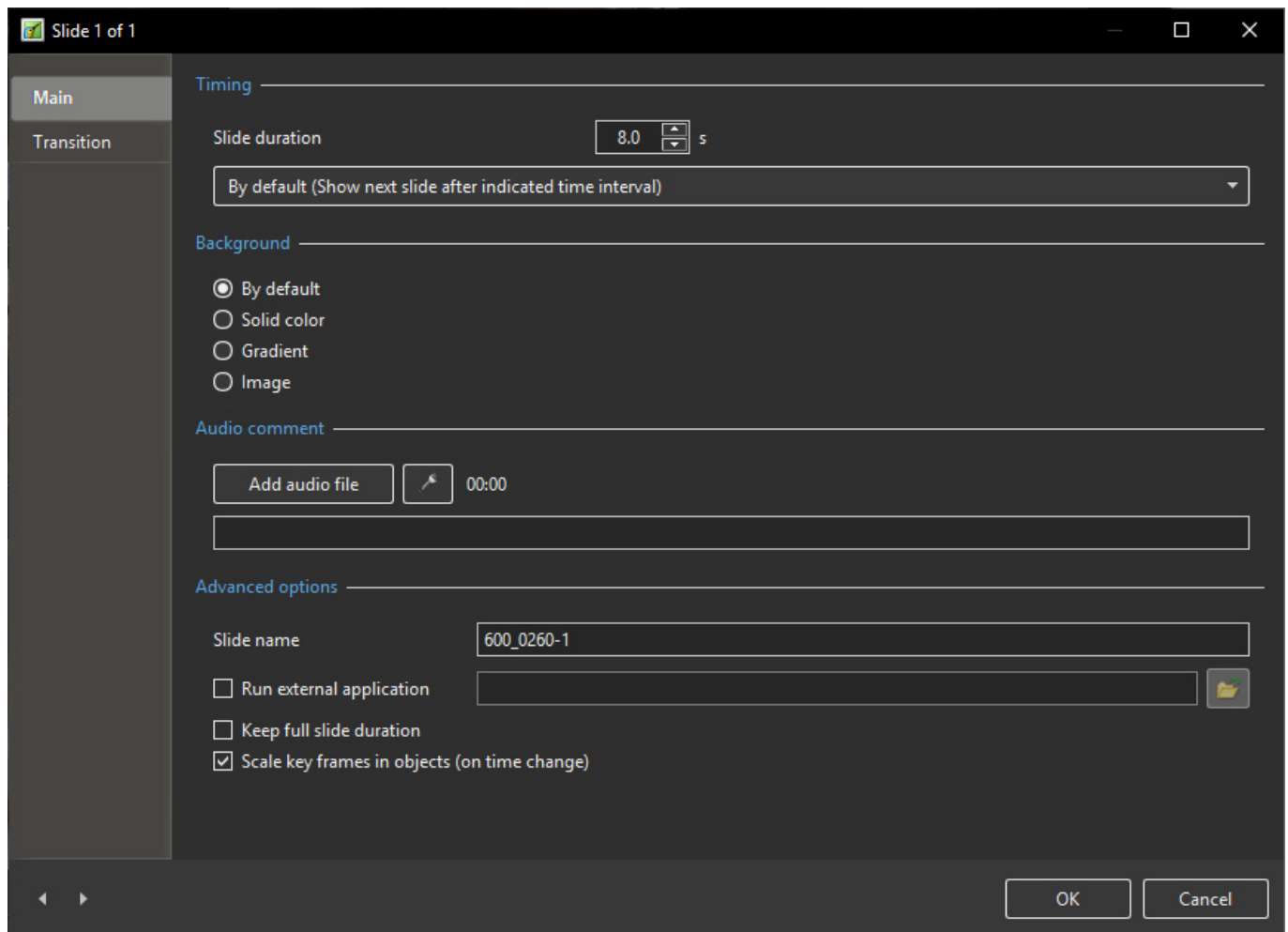


# Slide Options

## Main Tab

The “Main” tab of “Slide Options” has 4 sections as shown below :



### Timing

The first section “Timing” enables a default duration to be set for each slide added to the Slide list. It also provides 5 options for the way in which slides are shown :

By default(show the next slide after indicated time interval);

Show next slide after the indicated time interval;

Wait for key press to show the next slide;

Loop this slide.

### Background

The next section “Background”, provides options for setting the background to a slide or slides.

This is virtually identical to the option in “Preferences/Screen” except that setting parameters there

applies to the entire show, whilst the option in “Slide Options/Background” only applies to those slides selected first.

Also it should be noted that setting background parameters is only relevant if the Main Image does not fill the projected screen space.

## Audio Comment

The next section “Audio comment”, allows a previously recorded audio file to be selected and added to a slide or a comment recorded and added. Again this mirrors the globally applicable option in “Project Options/Audio” tab.

## Advanced Options

The final section is “Advanced options”:

Slide Name - shows the selected (default) slide file name and allows the Slide to be renamed. Renaming the Slide is particularly useful when creating Styles to give the Slide a generic rather than a specific name - Slide 001, Slide 002 etc

Run External Application - Run an external slide show or application automatically. After the external application has terminated, the show continues with the next slide.*(This only applies when the Output is Executable - Not applicable to Video Output)*

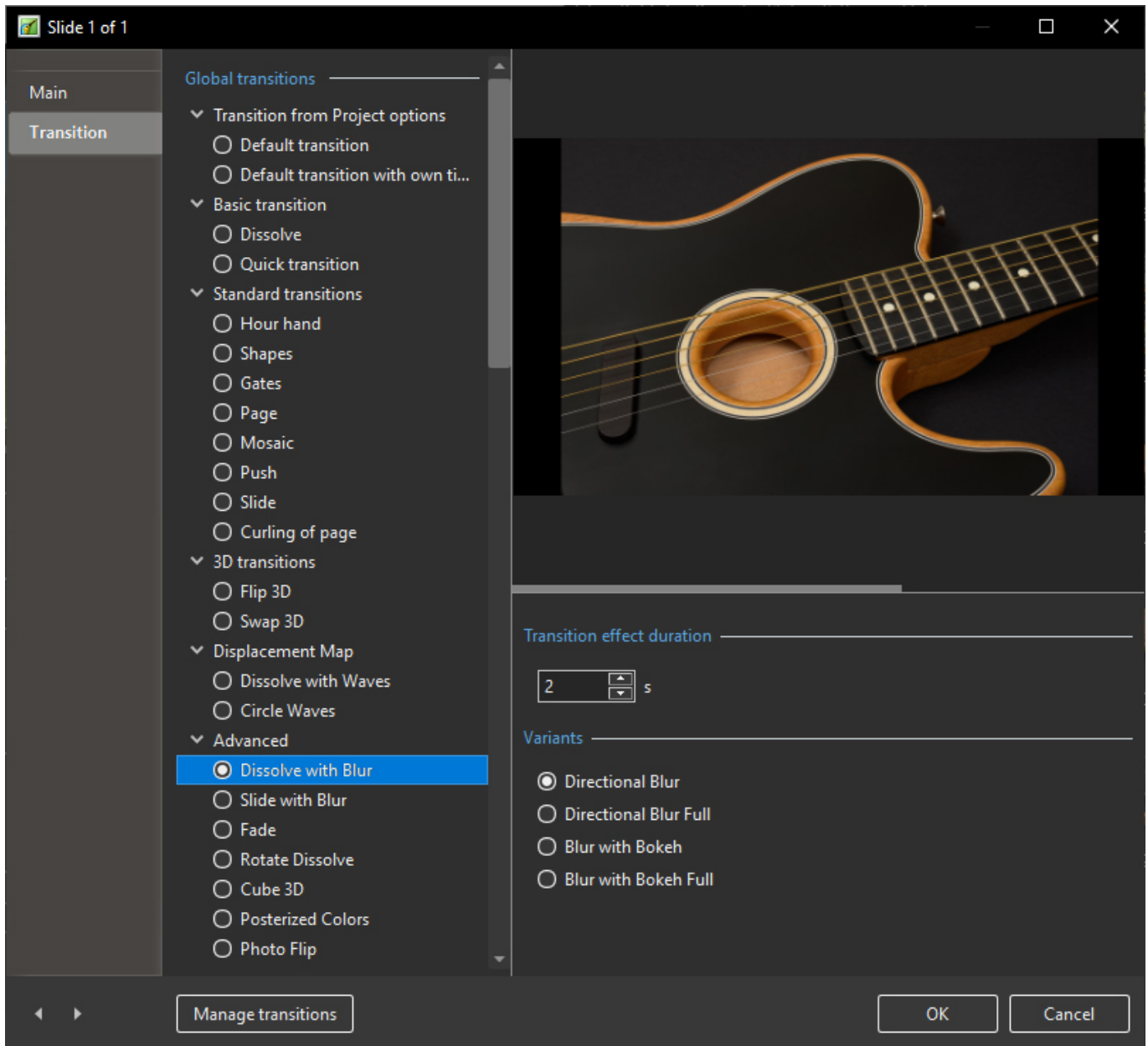
Keep Full Slide Duration and Scale Key Frames in Objects can also be set for the current slide here independent of the settings of “Preferences/Project/Default options for new slides”

(see [Project](#)).

# Transition Tab

## Preset Transitions

- The “Transitions” tab provides transition options for slide(s).
- The options provided are very similar to those available on a global basis in Project Options / Transitions
- the main difference is that here the transition applied as a default in “Project Options” is replaced with a specific transition for the slide or slides selected.
- The “Slide Options/Transition” tab is shown below.



- At the top of the tab page, the initial setting of “Transition from Project options” is set to the “Default transition”.
- Thus the selected slide(s) will have transition parameters set as in “Project Options”.
- If “Default transition with own duration” is selected, the type of transition will remain unchanged but its duration can be altered.
- Clicking on one of the standard transitions will apply this to the selected slide(s) and the transition parameters can be altered as required.
- In this respect the operations of transitions is the same as the “Transitions Tab” in “Project Options”.

## Custom Transitions

See Article here: [https://docs.pteastudio.com/en-us/10.0/how\\_to\\_v10/customtransitions](https://docs.pteastudio.com/en-us/10.0/how_to_v10/customtransitions)

Last update: 2023/01/10 17:46 en-us:11.0:project\_settings\_1:slide\_settings https://docs.pteamstudio.com/en-us/11.0/project\_settings\_1/slide\_settings?rev=1673372761

---

From: <https://docs.pteamstudio.com/> - **PTE AV Studio**

Permanent link: [https://docs.pteamstudio.com/en-us/11.0/project\\_settings\\_1/slide\\_settings?rev=1673372761](https://docs.pteamstudio.com/en-us/11.0/project_settings_1/slide_settings?rev=1673372761)

Last update: **2023/01/10 17:46**

