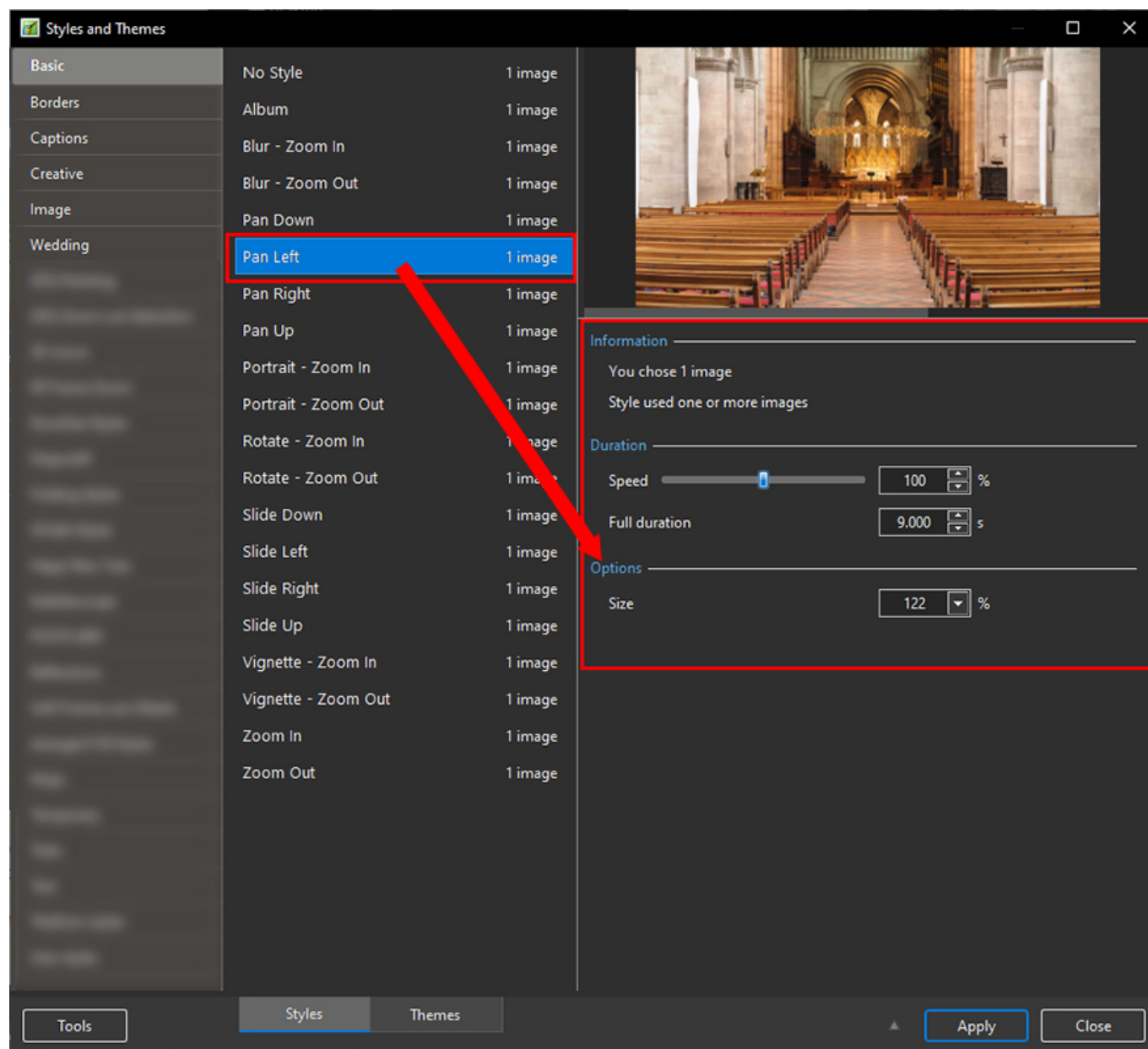


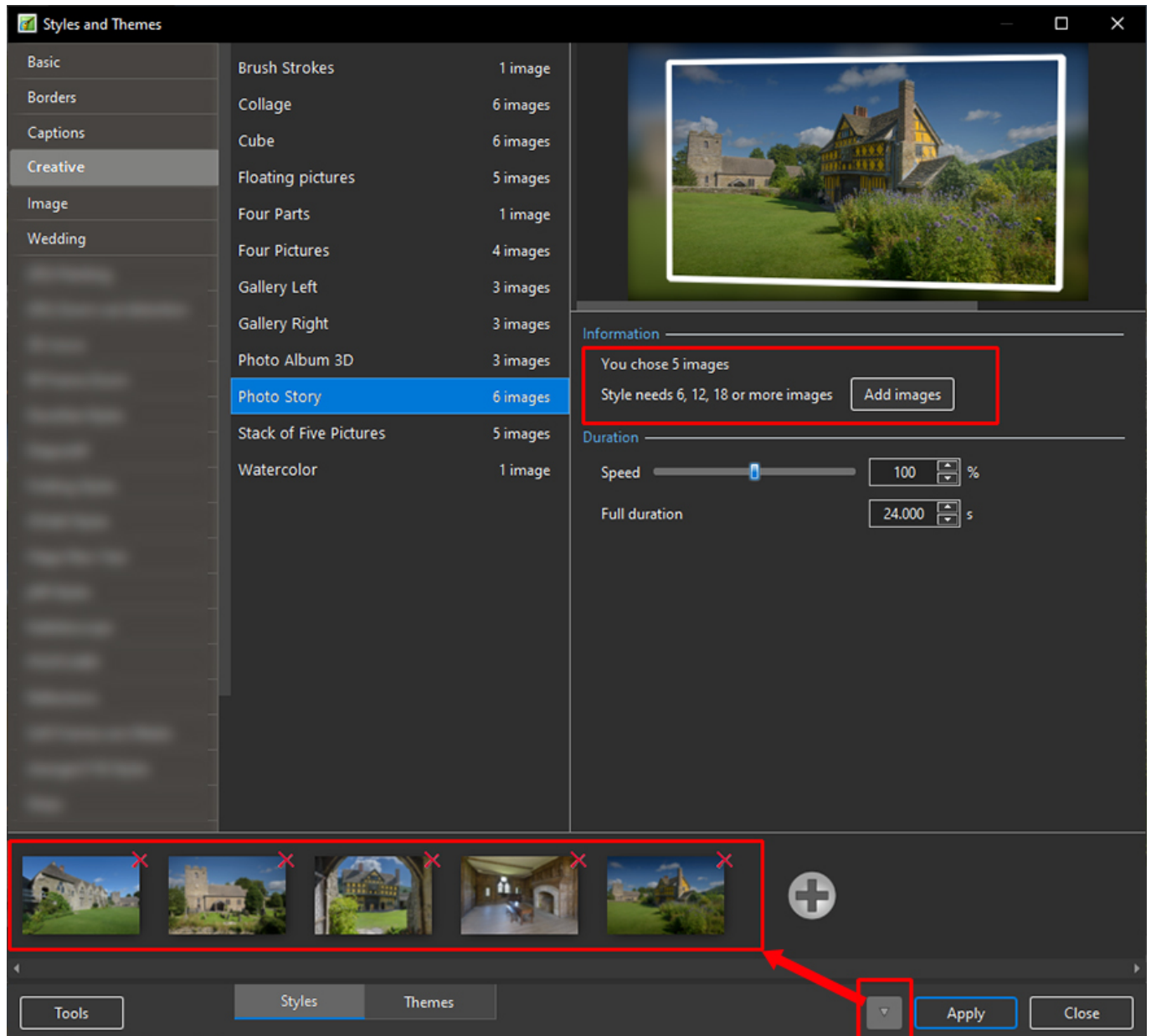
Applying a Style

To apply a Preset Style

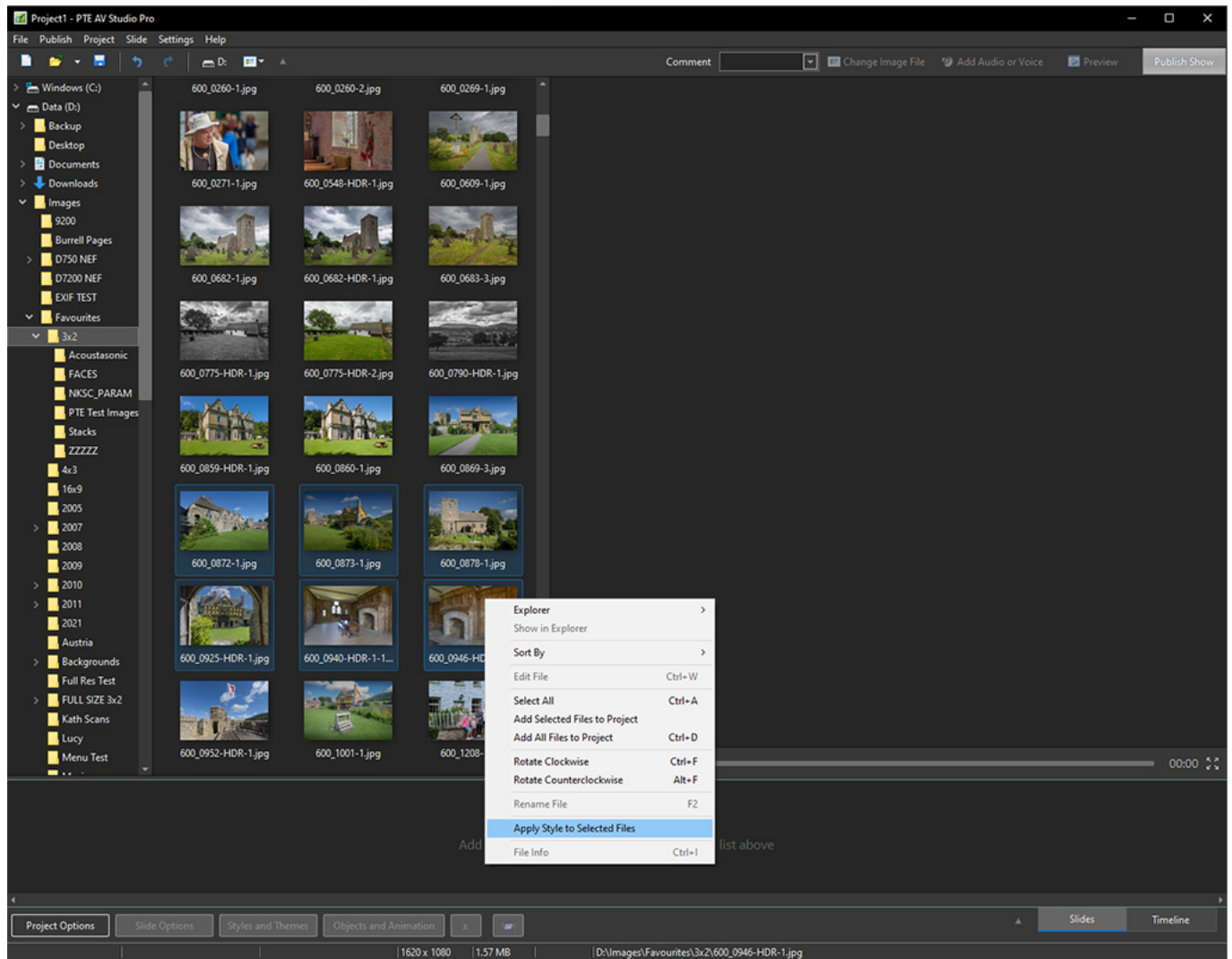
- Drag or otherwise add an Image to the Slide List
- Open the Style Dialogue by clicking on "Slide Style"



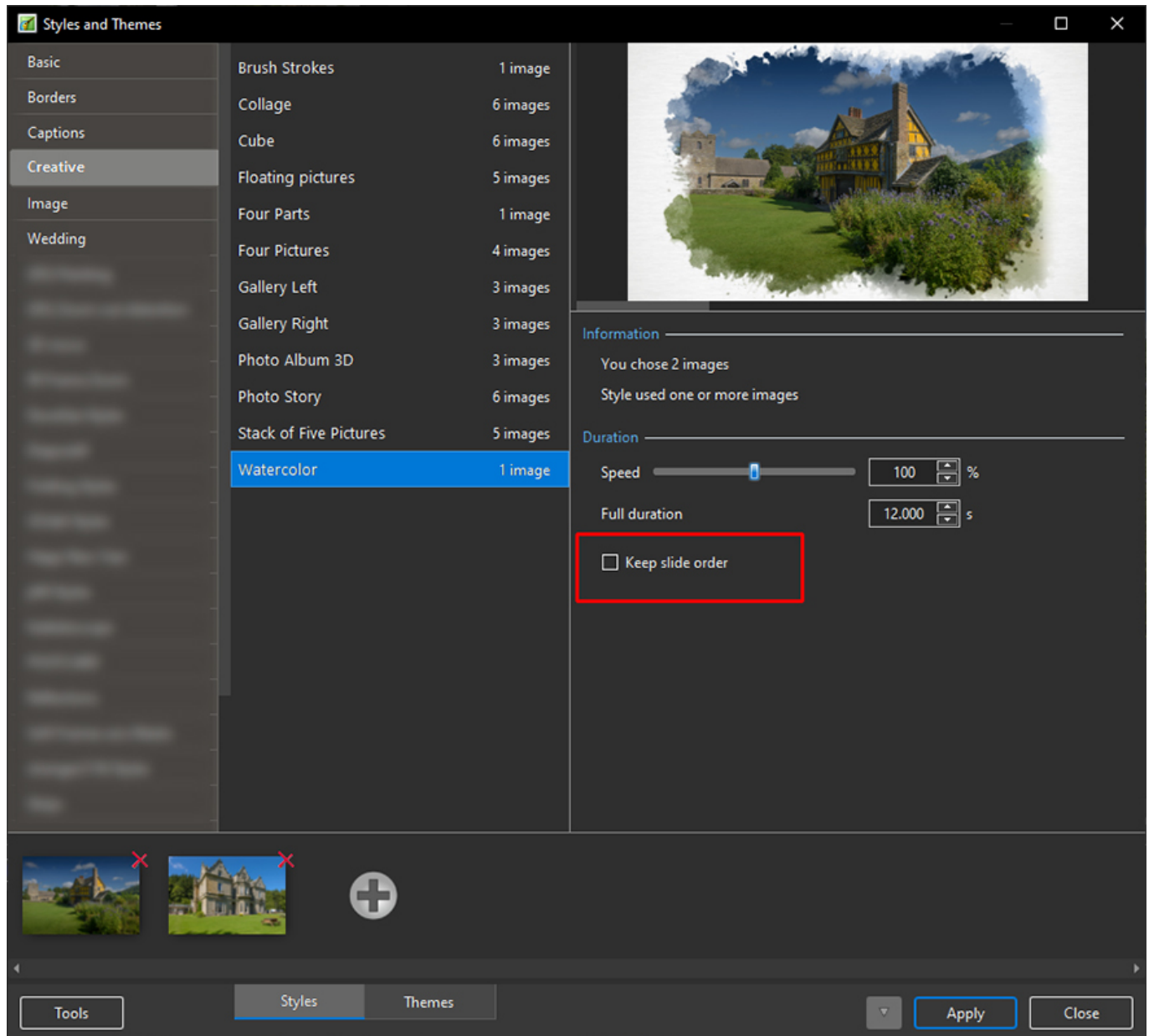
- In the example above you are told that the Style requires one image and that you have correctly supplied one image
- It is possible to add more than one image, highlight them all and the Style will be applied to all
- The Preview Screen will show the animation/effect
- The Speed and Full Duration of the Style are interlinked and either can be used to match the Style to your desired Duration
- The Options parameter varies and is at present only available in PTE's own Preset Styles



- In the example above you are told that the Style requires six images and that you have incorrectly supplied five images
- You can add image(s) by either clicking on the Add Images Button or the + (Plus) Button
- The Preview Screen will show the animation/effect
- The Speed and Full Duration of the Style are interlinked and either can be used to match the Style to your desired Duration



- In the main window, it's possible to quickly apply a slide style for selected images in the File List and add slides to your project (See above example)



- When you selected several non-consecutive slides (for example 1, 3, 7, etc) and apply a single style (which uses 1 picture), it's possible to keep original order of slides. Tick the option "Keep slide order" (See above)

From:
<https://docs.ptavstudio.com/> - **PTE AV Studio**

Permanent link:
<https://docs.ptavstudio.com/en-us/11.0/slide-styles/apply?rev=1677066282>

Last update: **2023/02/22 11:44**

