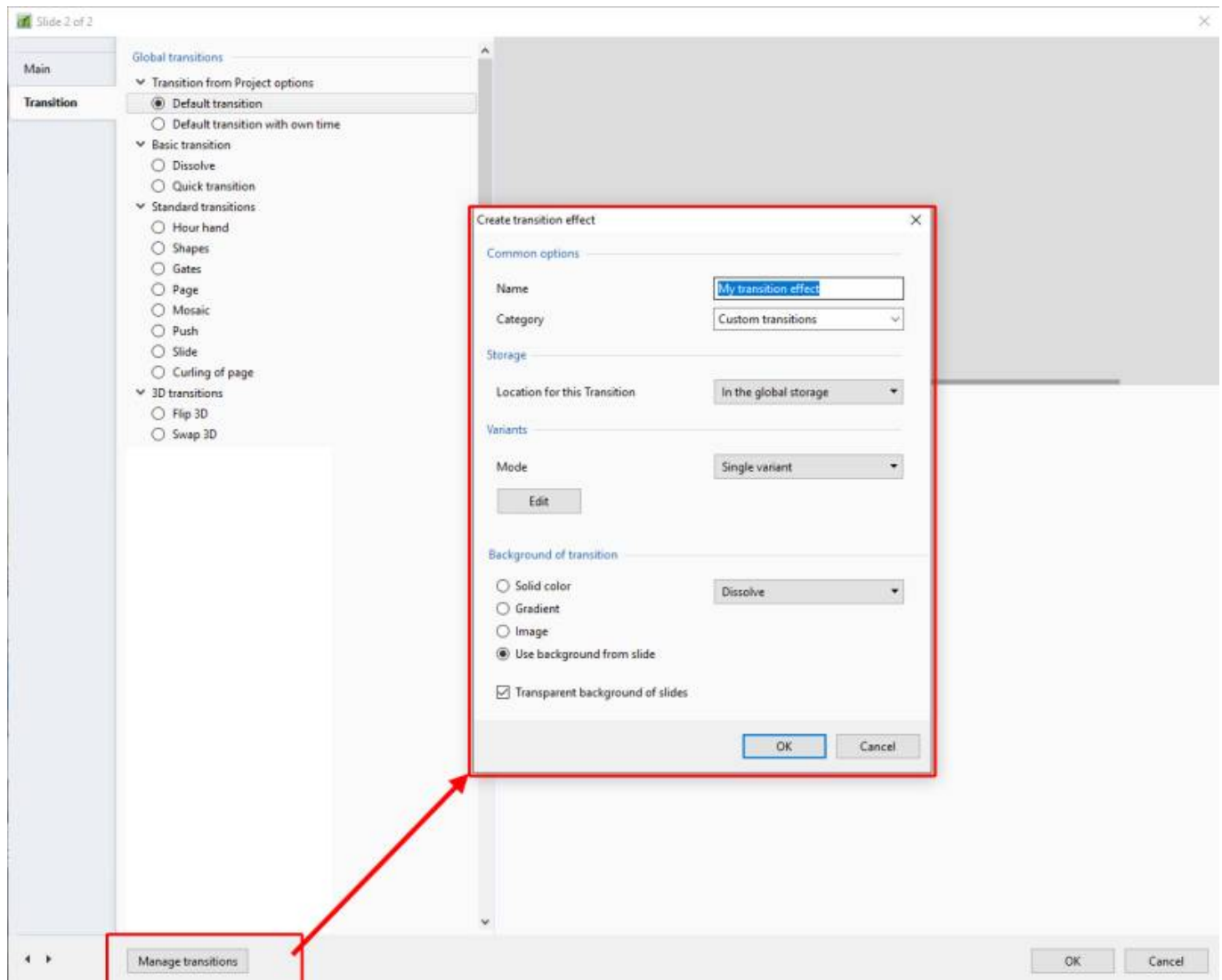


# Create Custom Transitions

- To Enter the Custom Transition Effect Window click on the AB symbol in a slide or:
- Click on Project Options / Transitions
- Then click on the Manage Transitions button



- Give the Transition a descriptive name
- Choose an existing Category or Type in a New Category Name
- Next, choose a Variant

**Create transition effect**

**Common options**

Name: My transition effect

Category: Custom transitions

**Storage**

Location for this Transition: In the global storage

**Variants**

Mode: **Single variant** (dropdown menu open showing: Single variant, Single variant, Multiple variants - list, Multiple variants - buttons)

**Background of transition**

☐ Solid color

☐ Gradient

☐ Image

☒ Use background from slide

☒ Transparent background of slides

Buttons: OK, Cancel

- E.g. Multi Variant - List

Create transition effect

**Common options**

Name: My transition effect

Category: Custom transitions

**Storage**

Location for this Transition: In the global storage

**Variants**

Mode: Multiple variants - list

+ - Duplicate Edit Rename ↑ ↓

Variant 1

Variant 2

Variant 3

**Background of transition**

☐ Solid color ☒ Gradient

Dissolve

OK Cancel

\* Choose Background Options and Click on Edit

## Single Variant



- The Aspect Ratio is automatically chosen to suit the Project Options AR

## Multi Variant - List



- Click on “+” to add a Variant to the List
- Click on “-” to Delete a Variant
- Click on Edit to proceed to the Editor
- Close the Editor Window by clicking on the “X” at top right to return to this Window
- Click on OK to Save

## Multi Variant - Buttons



- Choose a Preset Variant
- Click on an Arrow Button
- Click on Edit to proceed to the Editor
- Close the Editor Window by clicking on the “X” at top right to return to this Window
- Click on OK to Save

**After Creating a Custom Transition it would be good practice to Export it to a folder somewhere on your HD called “Exported Slide Styles”**

## Global vs Embedded Transitions

- The **Global Transitions** section contains both the Preset PTE Transitions and the Custom Transitions which you can Create yourself or Import from the Forum etc.
- The “Manage Transitions” button has a dropdown menu which allows the Option to “Clone” a Custom Transition
- The Cloned Copy can then be either edited to create a Variation or “Moved to the Local Storage” (**Embedded Transitions**)
- When creating a “Backup in ZIP” (BIZ) to export to another PC which might not have the Custom Transition it is included for use when the BIZ is unzipped
- The Global Custom Transitions are Embedded in Executable files

From:  
<https://docs.pteastudio.com/> - **PTE AV Studio**

Permanent link:  
[https://docs.pteastudio.com/en-us/9.0/how\\_to\\_v9/customtransitions?rev=1581508593](https://docs.pteastudio.com/en-us/9.0/how_to_v9/customtransitions?rev=1581508593)

Last update: **2022/12/18 11:20**

