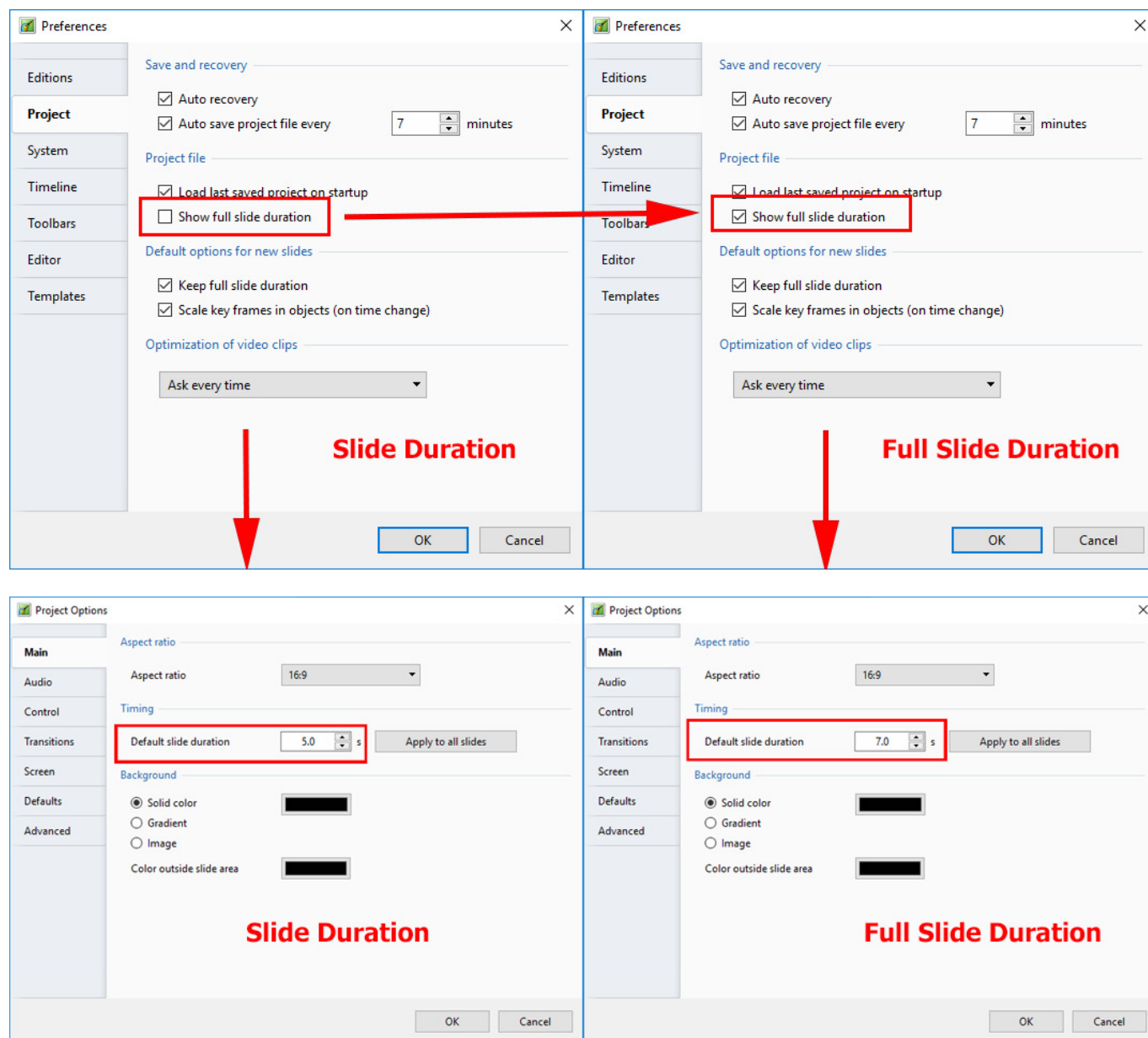
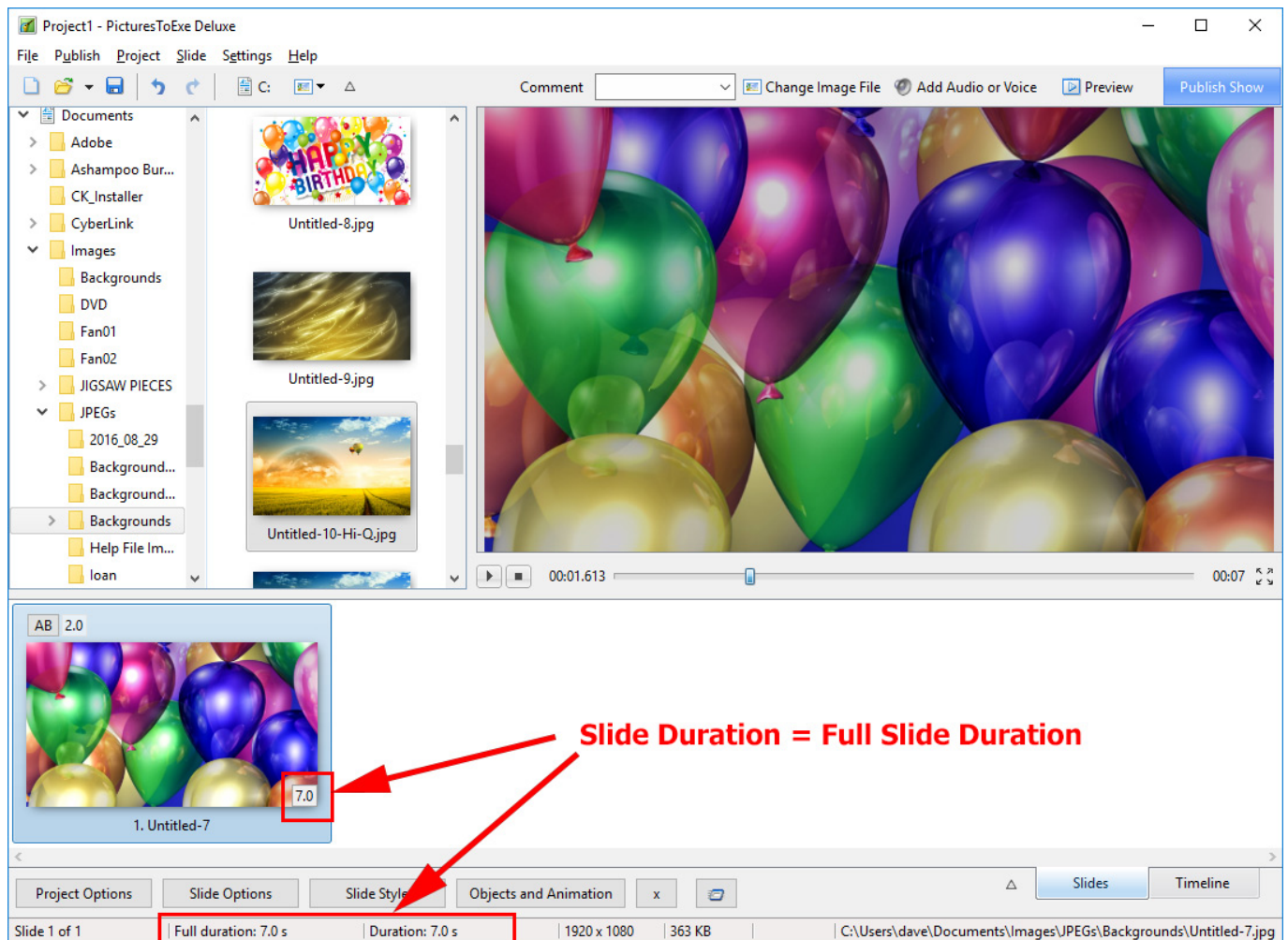


## Slide Duration and Full Slide Duration

Depending on the settings of Settings / Preferences and Project Options the duration seen in the Slide List can change.

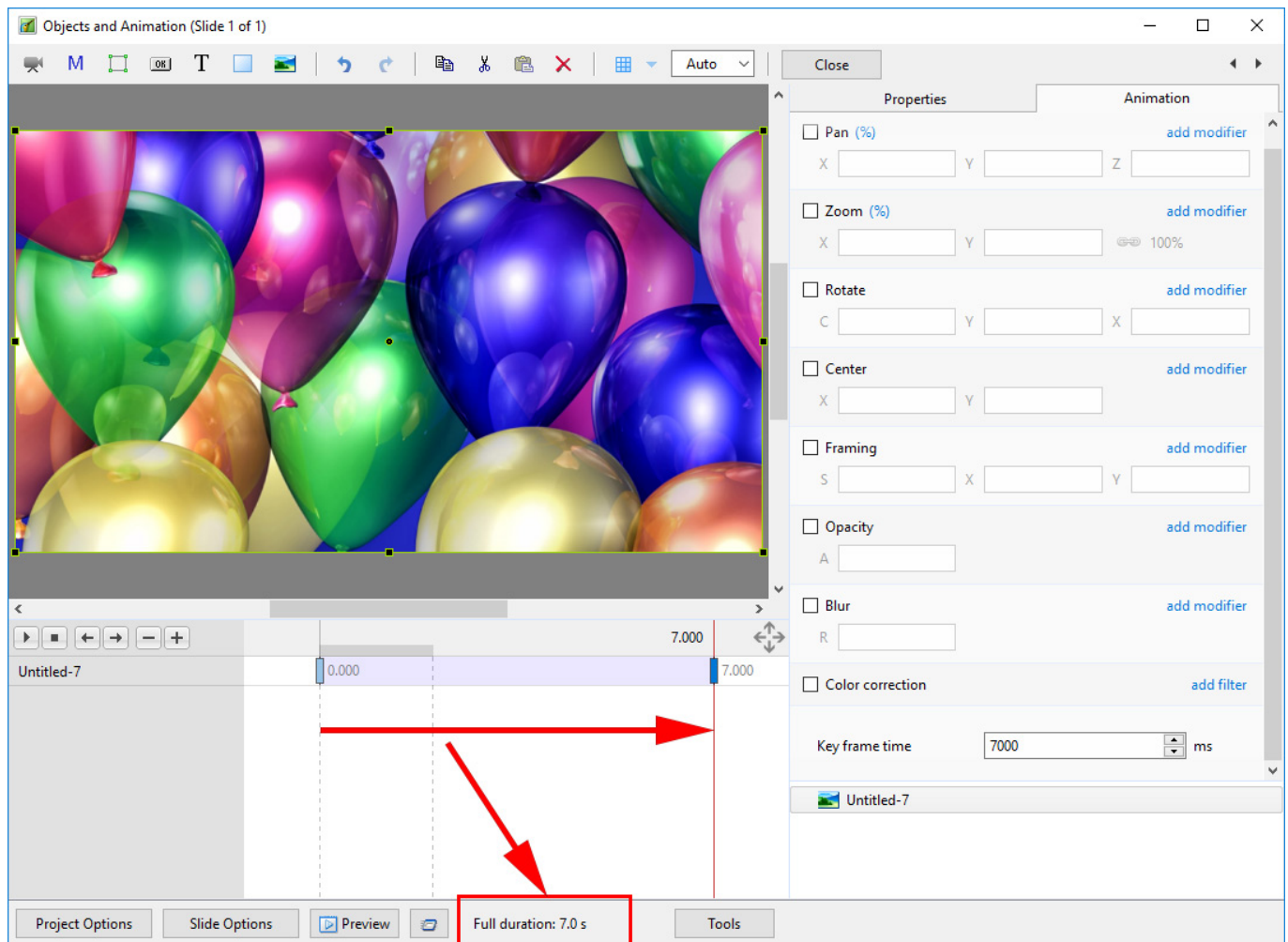


If a single slide is added to the Slide List the Main Screen View looks like this:



The Status bar shows the Full (Slide) Duration and the (Slide) Duration. The Slide Icon displays the Slide Duration. For a single slide the Duration will equal the Full Duration because there is no following slide transition time to take into account - or the following slide transition time is zero.

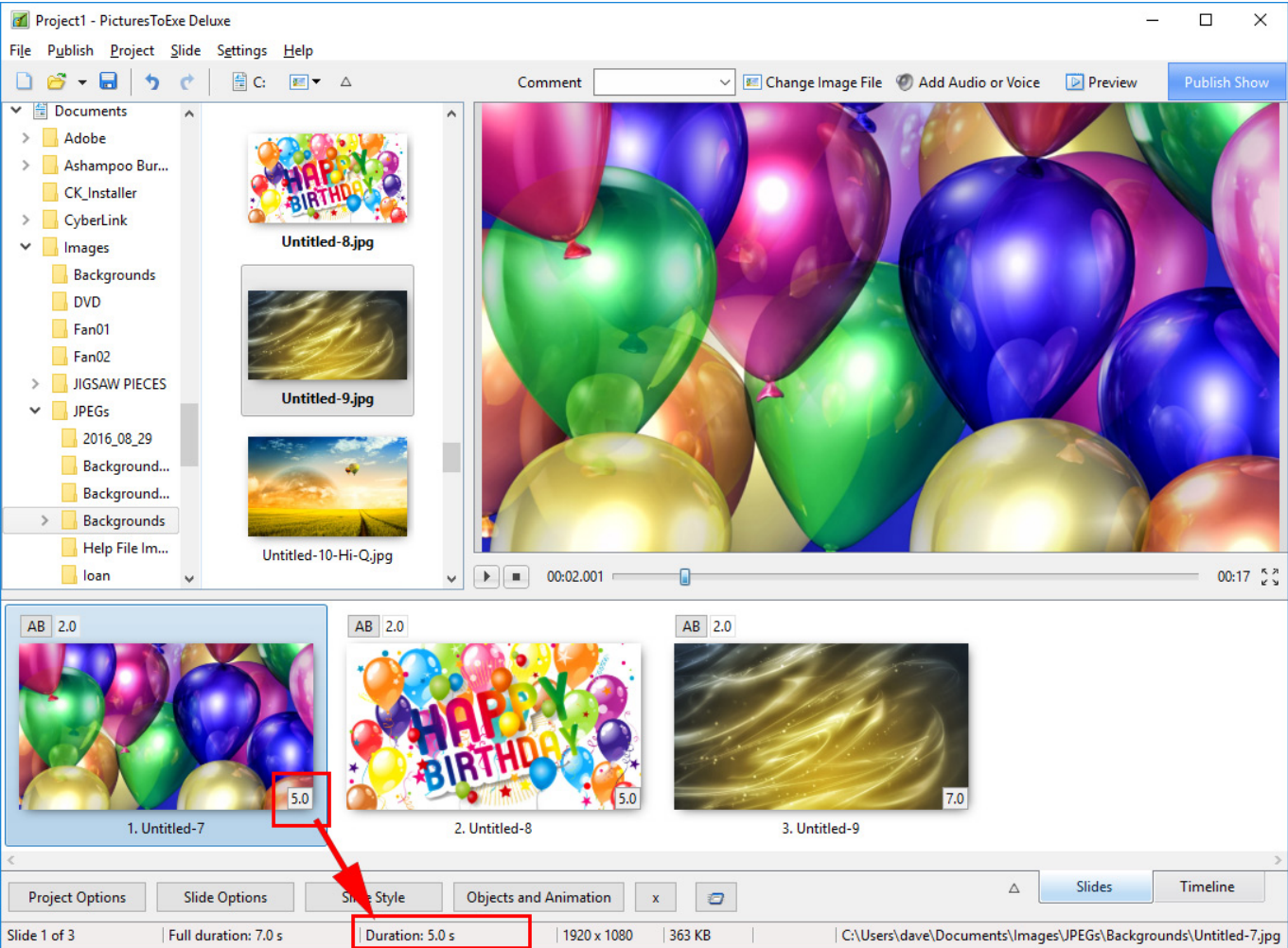
The corresponding Objects and Animation Screen looks like this:



## Adding another slide

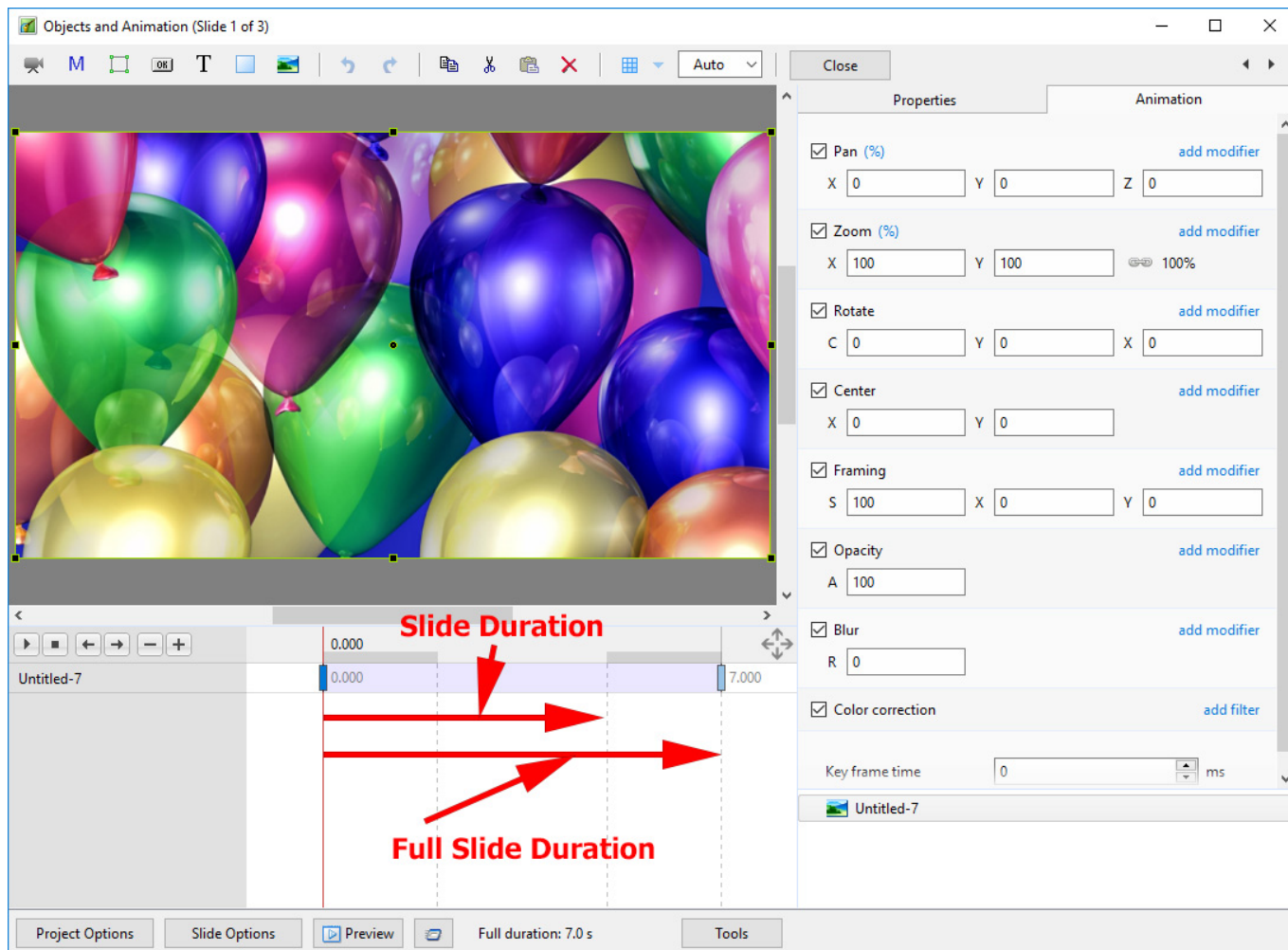
### Show Full Slide Duration Un-Ticked:

Adding a second slide with a 2 second transition time causes a change in the displayed (Slide) Duration. Note that the Full (Slide) Duration remains the same.



Objects and Animation View:

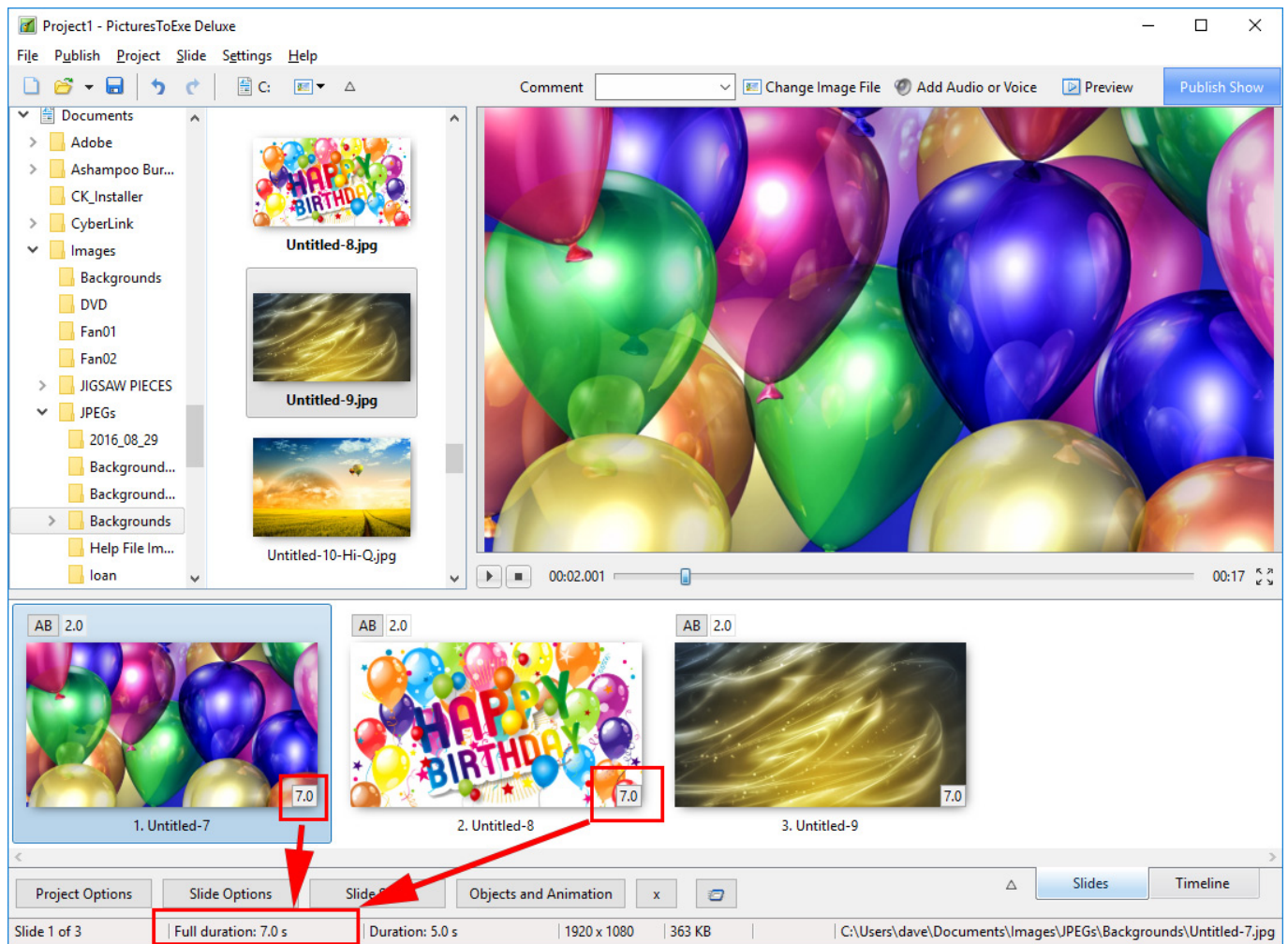




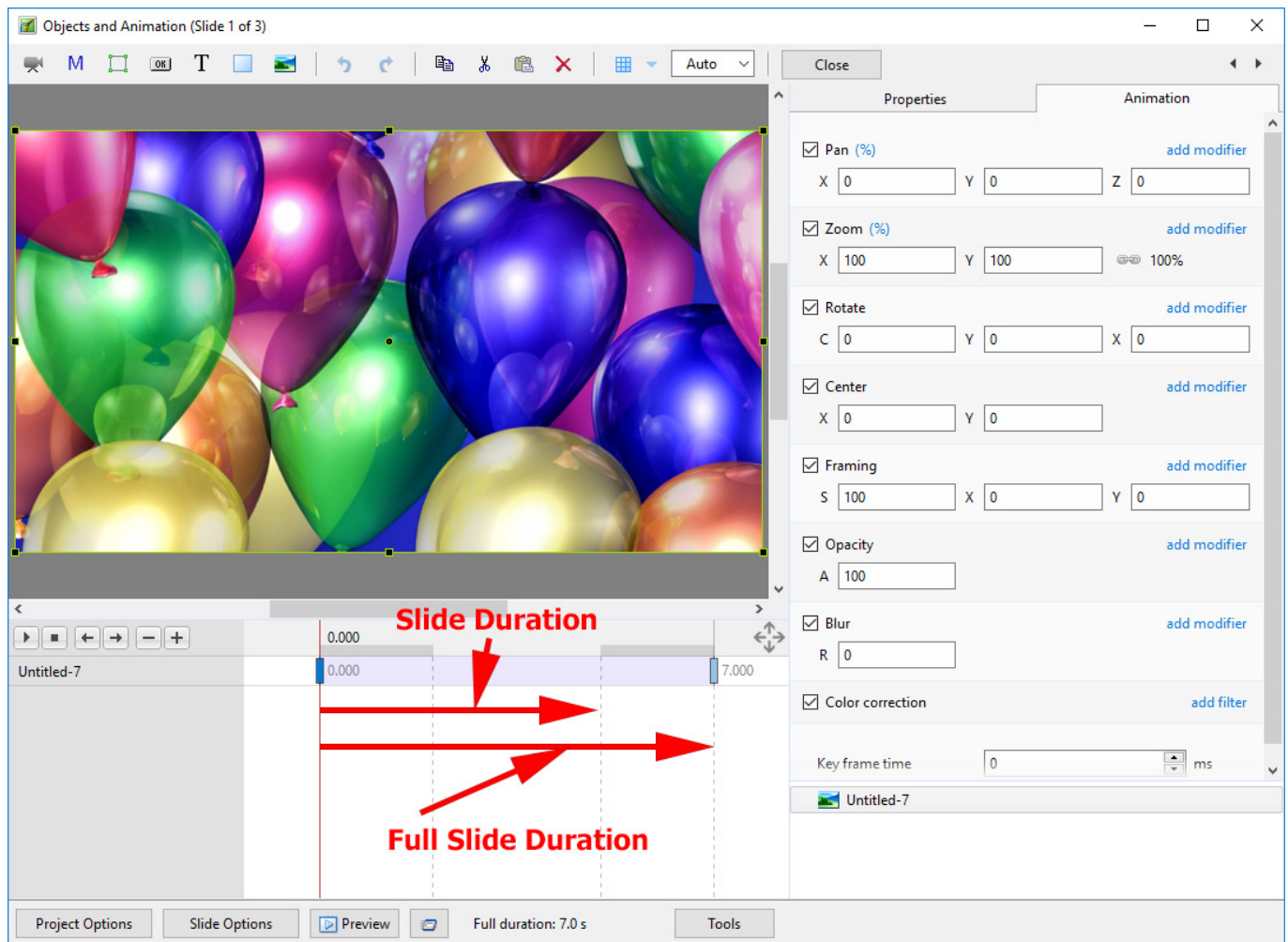
The (Slide) Duration of Slide 1 remains at 5 seconds but because Slide 1 is visible from the beginning of its own transition to the end of the Slide 2 transition (at varying opacities) its Full (Slide) Duration is 7 seconds.

## Show Full Slide Duration Ticked:

Adding a second slide with a 2 second transition time causes a change in the Duration Icon on the Slide. Note that the Full (Slide) Duration and Full (Slide) Duration remain the same.



The Objects and Animation Screen remains the same.



## Example

<nowiki>\*</nowiki> Key Frames in Slide 1 are placed at Zero and 7 seconds (7000ms)

<nowiki>\*</nowiki> Key Frames in Slide 2 are placed at 5 seconds (0ms) and 12 seconds (7000ms)

Below is a **Simulation** of two slides in Objects and Animation Screen:



The Timeline View:



The screenshot displays the PTE AV Studio software interface. The top menu bar includes File, Publish, Project, Slide, Settings, and Help. The main workspace is divided into a left pane showing a file explorer with folders like CK\_Installer, CyberLink, Images, DVD, Fan01, Fan02, JIGSAW PIECES, JPEGs, and Backgrounds. The right pane shows a preview of a slide with a colorful balloon background. Below the preview is a timeline with a scale from 0:00 to 0:13. Three slides are visible: 1. Untitled-7 (0:00 to 0:05), 2. Untitled-8 (0:05 to 0:10), and 3. Untitled-9 (0:10 to 0:13). Red arrows indicate the duration and full duration for each slide. The bottom status bar shows 'Slide 1 of 3', 'Full duration: 7.0 s', 'Duration: 5.0 s', '1920 x 1080', '363 KB', and the file path 'C:\Users\dave\Documents\Images\JPEGs\Backgrounds\Untitled-7.jpg'.

From:

<https://docs.pteastudio.com/> - PTE AV Studio

Permanent link:

[https://docs.pteastudio.com/en-us/9.0/how\\_to\\_v9/duration?rev=1491419280](https://docs.pteastudio.com/en-us/9.0/how_to_v9/duration?rev=1491419280)

Last update: 2022/12/18 11:20

