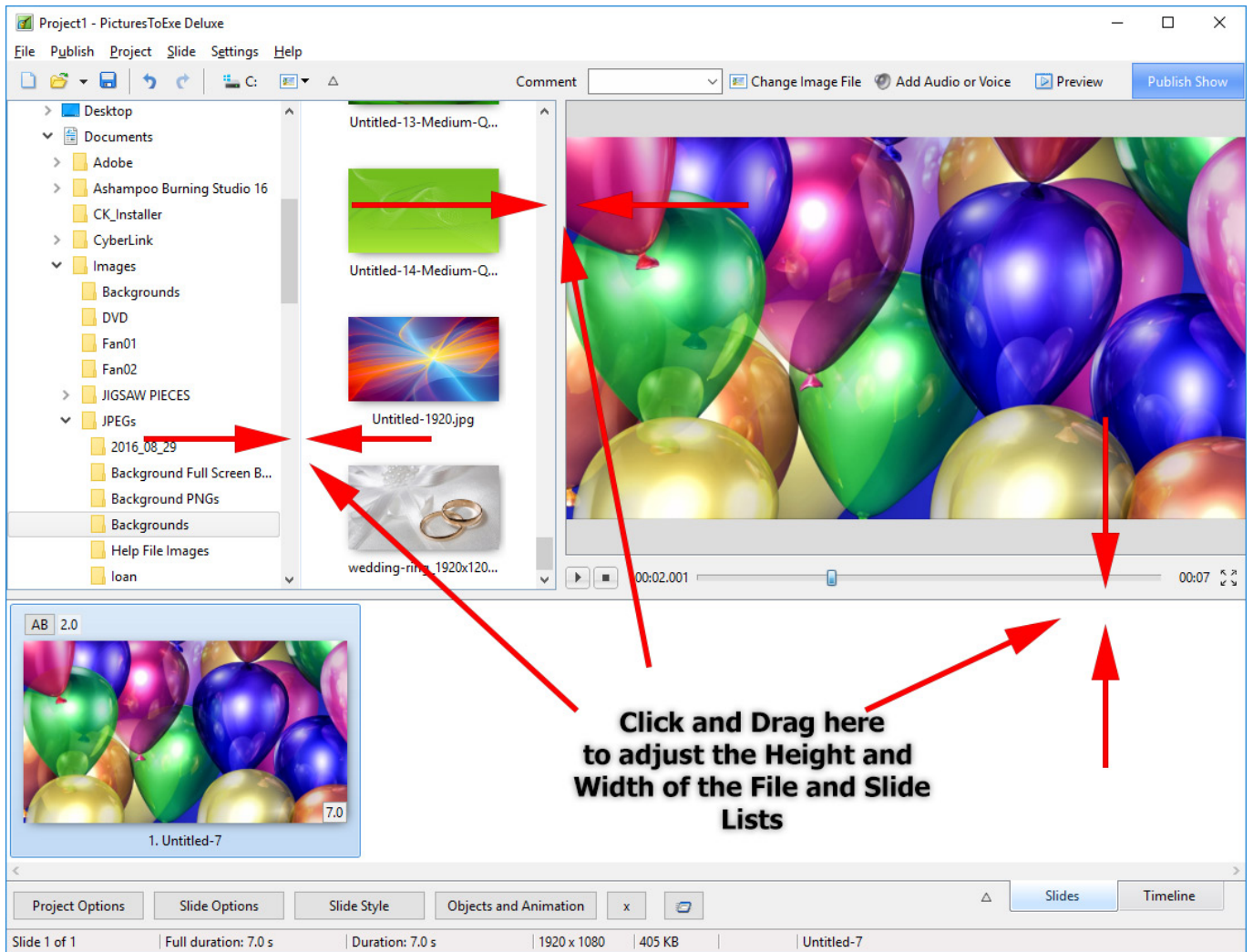


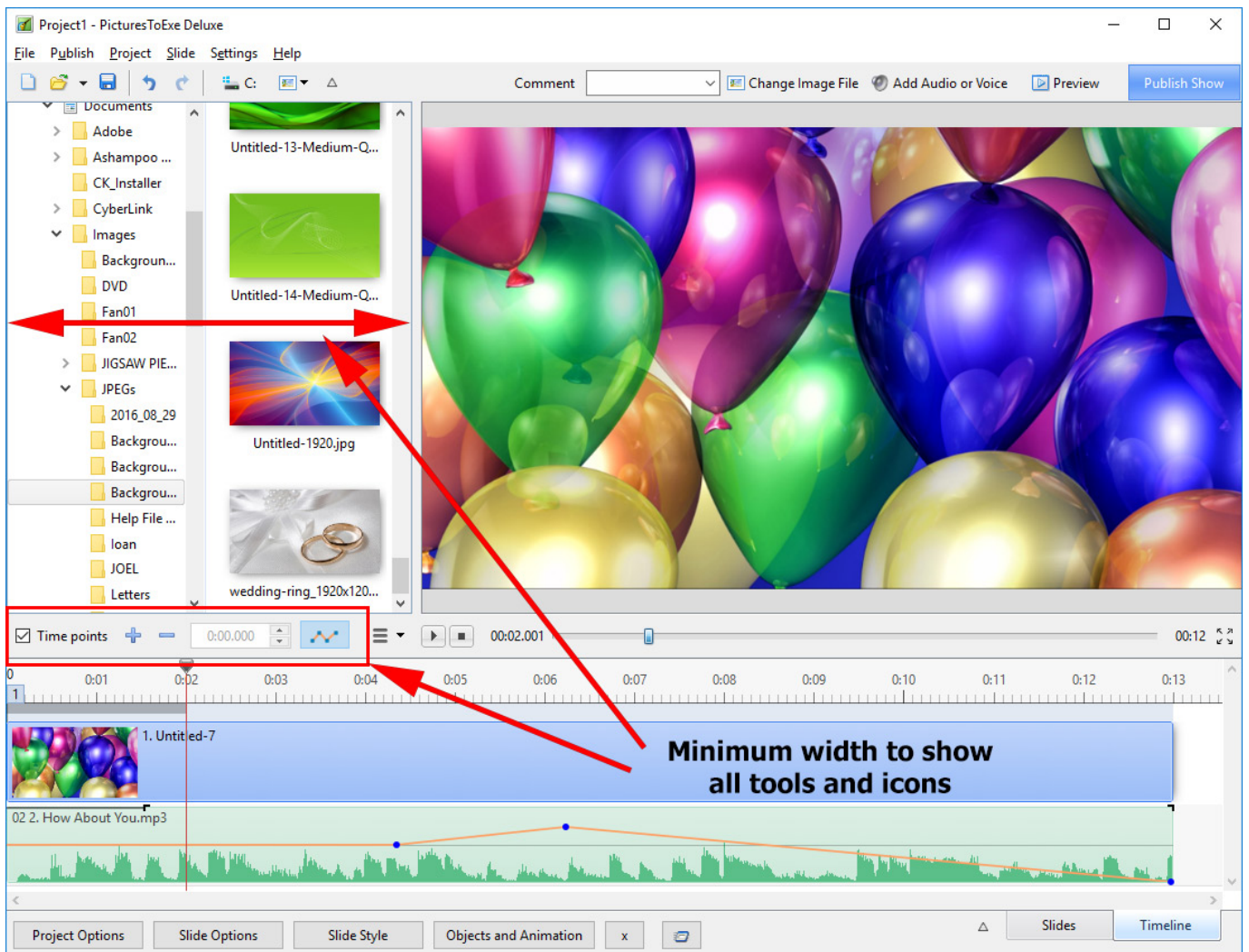
Configuring The Main Screen

The Main Screen can be configured or laid out to suit specific needs and monitor sizes.

The Slide View



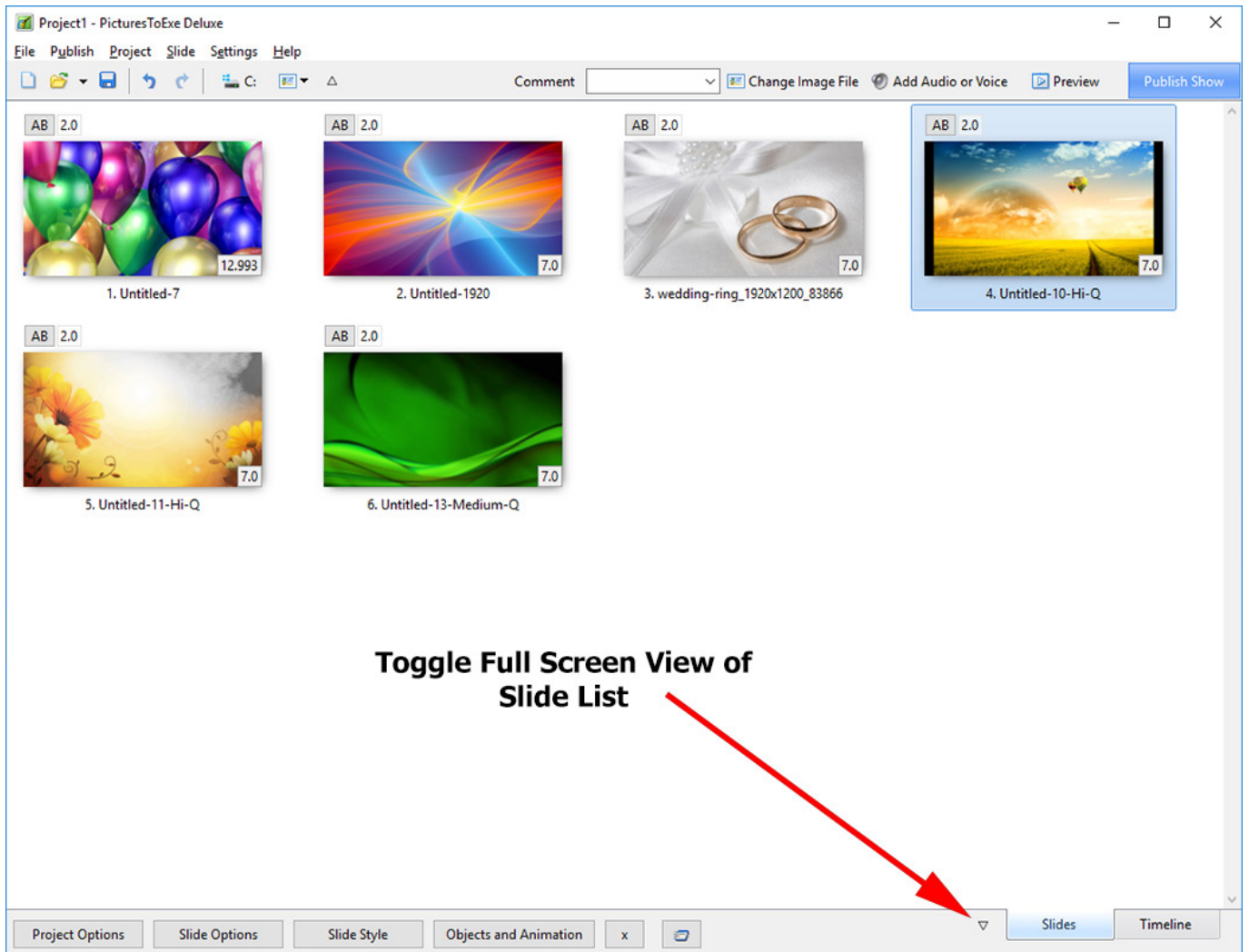
The Timeline View



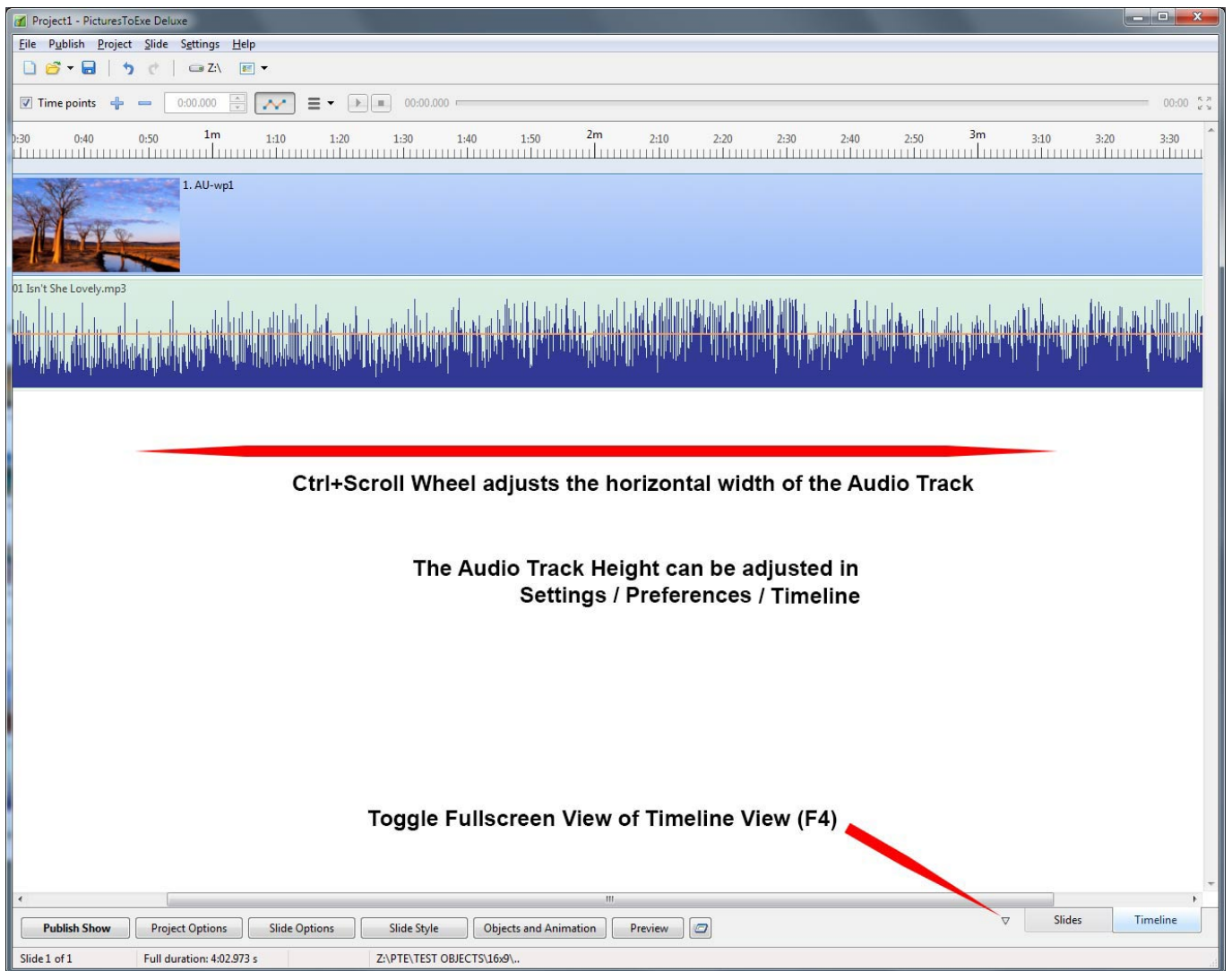
The Full-Screen View

Slides View

- Toggle Full Screen View of Slide List



Timeline View



From: <https://docs.ptavstudio.com/> - **PTE AV Studio**

Permanent link: https://docs.ptavstudio.com/en-us/9.0/main-window_1/configuring_main_screen

Last update: **2022/12/18 11:20**

