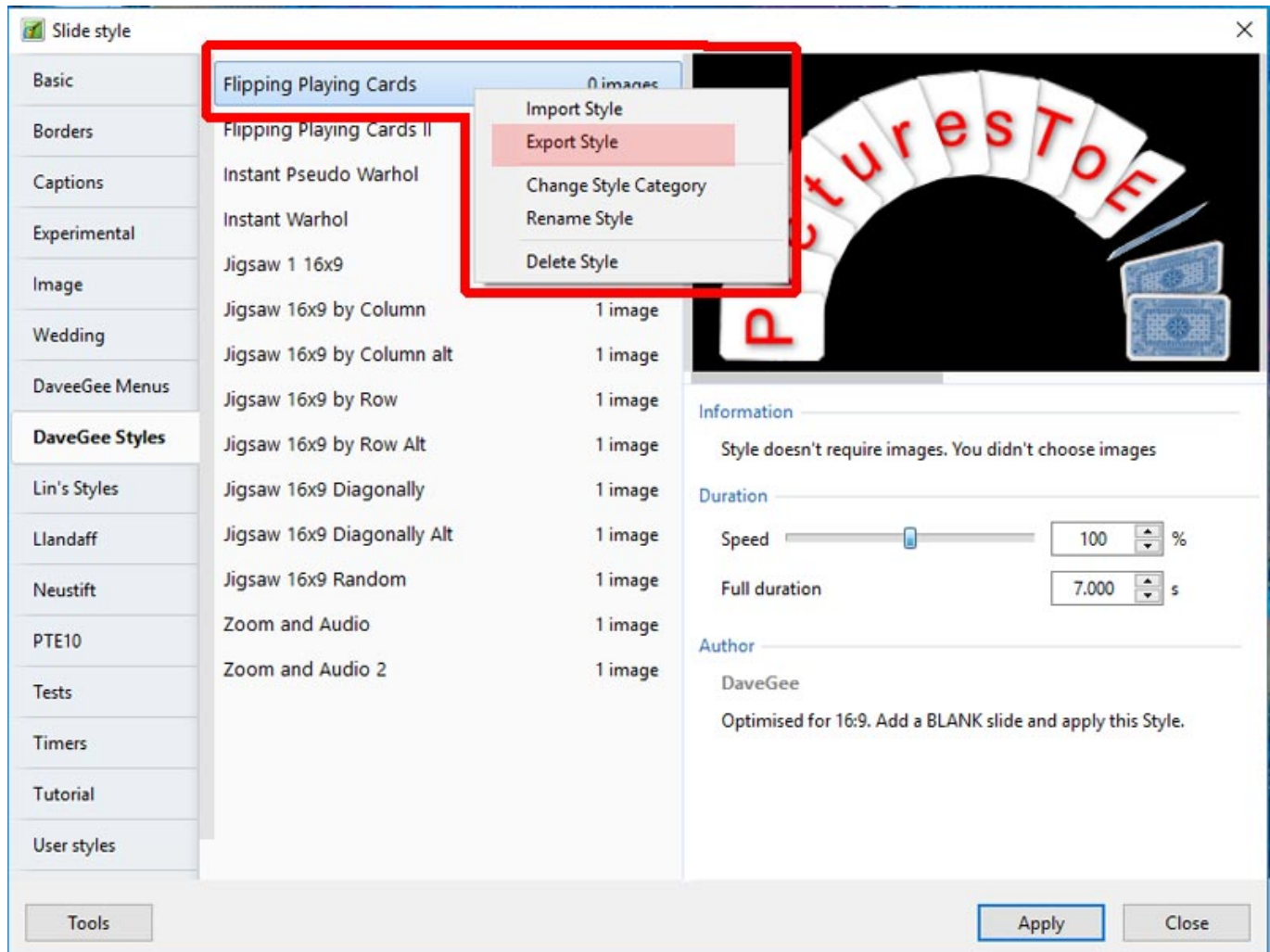


Import/Export a Style

To Export a Style and share with the PTE Community:

- Right click on a Style and choose EXPORT STYLE from the drop-down menu



- It is suggested that a Folder be created and suitably named (Exported Slide Styles)
- Exported Styles use the .ptestyle suffix

To Import a Style which has been shared with the PTE Community:

- Right click on a Style and choose IMPORT STYLE from the drop-down menu
- Navigate to the folder where the Style to be Imported is saved
- Double click on the Style to be Imported or click on OK
- The Imported Style will be imported into the Category designated by the Style Author

From:
<https://docs.pteastudio.com/> - PTE AV Studio

Permanent link:
<https://docs.pteastudio.com/en-us/9.0/slide-styles/import?rev=1541169118>

Last update: 2022/12/18 11:20



