

Linked Images

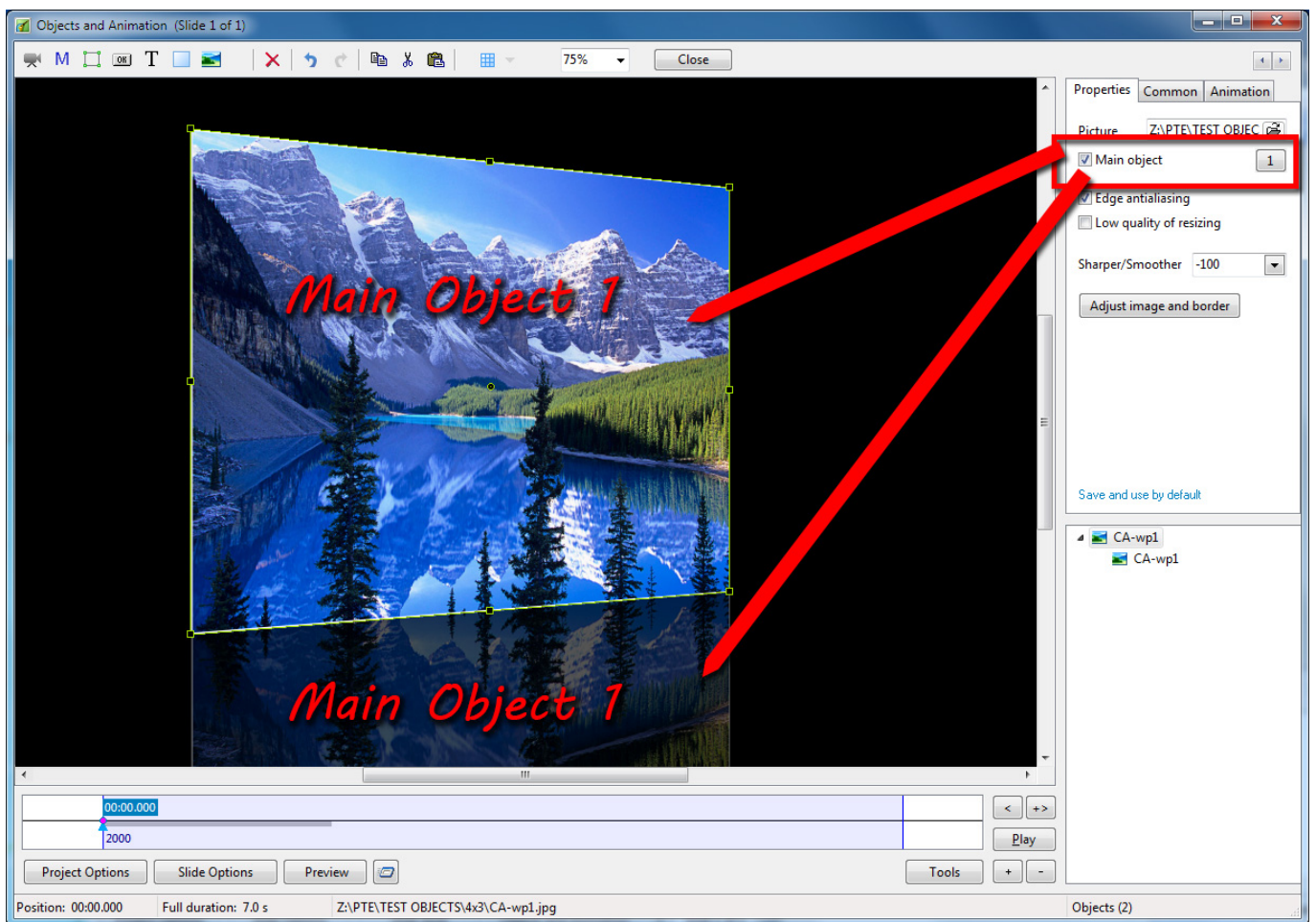
Since PicturesToExe Deluxe 8.0 you can easily link images on a slide.

For example, you want to create a reflection of an image.

Add a new image to the Slide list. Open Objects and animation editor.

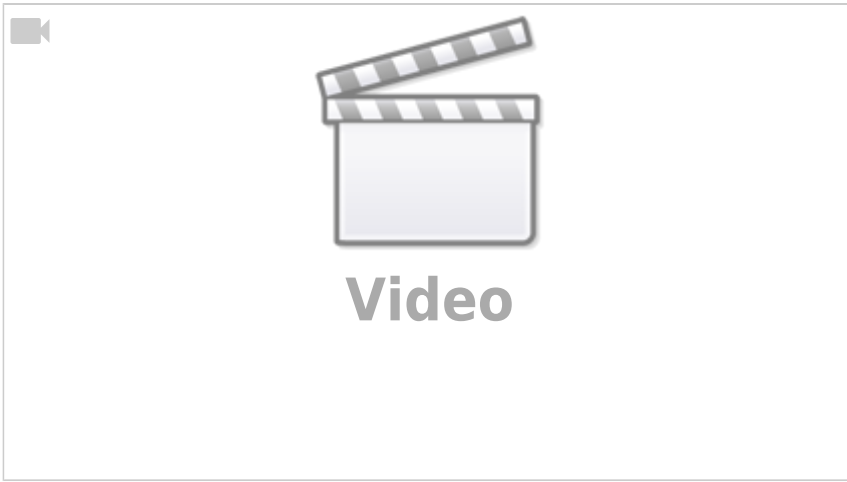
You see that image has option “Main object: 1”.

Copy and paste this object. It will have same option “Main object: 1”. Both images are linked:



If you replace file name of one image object, another linked image also will be replaced.

See the Demo:



This demo project shows another use for this new great feature. First slide contains 4 objects with same image file name and adjusted Canvas size to create an animation. You can easily replace all these images in one click.

From:
<https://docs.pteastudio.com/> - **PTE AV Studio**

Permanent link:
<https://docs.pteastudio.com/en-us/9.0/techniques/linkimages>

Last update: **2022/12/18 11:20**

